



# WHITE GOLD CORP

## Corporate Overview – June 2022

TSX-V: WGO | OTCQX: WHGOF | FRA: 29W

*Leading Yukon's Modern Gold Rush*

# IMPORTANT NOTICE



*This presentation includes certain statements that constitute “forward-looking statements”, and “forward-looking information” within the meaning of applicable Canadian and United States securities laws (“forward-looking statements” and “forward-looking information” are collectively referred to as “forward-looking statements”, unless otherwise noted). All statements, other than statements of historical fact, may be forward-looking statements. Forward-looking statements are often, but not always, identified by the use of words such as “believe”, “anticipate”, “estimate”, “project”, “intend”, “expect”, “may”, “will”, “plan”, “should”, “would”, “contemplate”, “possible”, “attempts”, “seeks”, “goals”, “targets” and similar expressions. These forward-looking statements appear in a number of places and include statements regarding our intent, or the beliefs or current expectations of our officers and directors. Forward-looking statements may relate to the Company’s future outlook and anticipated events or results and may include statements regarding the White Gold properties mentioned herein, including, but not limited to, exploration and development plans with respect thereto and exercise of the Option, other exploration and development activities, the Company’s future financial position, business strategy, budgets, litigation, projected costs, financial results, taxes, plans and objectives. We have based these forward-looking statements largely on our current expectations and projections about future events and financial trends affecting the financial condition of our business.*

*Forward-looking statements are based on certain estimates, expectations, analysis and opinions that management believed reasonable at the time they were made or in certain cases, on third party expert opinions. These forward-looking statements were derived utilizing numerous assumptions regarding expected growth, results of operations, performance and business prospects and opportunities, general business and economic conditions, interest rates, the supply and demand for, deliveries of, and the level and volatility of prices of gold and related products, regulatory and governmental approvals, market competition, accuracy of mineral resource and mineral reserve estimates and geological, operational and price assumptions on which such estimates are based, conditions in financial markets, future financial performance of the Company, our ability to attract and retain skilled staff, our ability to procure equipment and supplies and results of exploration and development activities. While the Company considers these assumptions to be reasonable, based on information currently available, they may prove to be incorrect. Accordingly, you are cautioned not to put undue reliance on these forward-looking statements. Forward-looking statements should not be read as a guarantee of future performance or results. To the extent any forward-looking statements constitute future-oriented financial information or financial outlooks, as those terms are defined under applicable Canadian securities laws, such statements are being provided to describe the current anticipated potential of the Company and readers are cautioned that these statements may not be appropriate for any other purpose, including investment decisions.*

*Such forward-looking statements involve known and unknown risks and uncertainties and other factors that may cause our actual events, results, performance or achievements to be materially different from any future events, results, performance or achievements expressed or implied by such forward-looking statements. Risks and uncertainties that may cause actual events, results, performance or achievements to vary materially include, but are not limited to, risks inherent to mineral exploration and development activities, changes in gold prices, changes in interest and currency exchange rates, inaccurate geological and metallurgical assumptions, unanticipated operational difficulties, government action or delays in the receipt of government approvals, adverse weather conditions, unanticipated events related to health, safety and environmental matters, labor disputes, political risk, social unrest, failure of counterparties to perform their contractual obligations, changes or further deterioration in general economic conditions, and other risks discussed in under the heading “Risks and Uncertainties” in the Company’s most recently filed MD&A.*

*Forward-looking statements speak only as of the date those statements are made. Except as required by applicable law, we assume no obligation to update or to publicly announce the results of any change to any forward-looking statement contained to reflect actual results, future events or developments, changes in assumptions or changes in other factors affecting the forward-looking statements. If we update any one or more forward-looking statements, no inference should be drawn that we will make additional updates with respect to those or other forward-looking statements. You should not place undue importance or reliance on forward-looking statements. All forward-looking statements contained in this presentation are expressly qualified in their entirety by this cautionary statement.*

## QUALIFIED PERSON

*The scientific and technical information contained in this presentation has been reviewed and approved by Terry Brace, P.Ge. and Vice President of Exploration for the Company, who is a “qualified person” within the meaning of National Instrument 43-101 – Standards of Disclosure of Mineral Projects.*

## District Scale Land Package

- Largest land holder in the White Gold District
- Tier 1 mining jurisdiction
  - 20M+ oz placer gold and 25M+ oz modern day gold discoveries
  - \$360M Resource Gateway Road infrastructure project underway
  - Ranked top 10 globally by the Fraser Institute

## Unique Value Proposition

- Defined high-grade gold deposits:
  - **Golden Saddle-Arc: 1,139,900** oz Au Ind. & **402,100** oz Au Inf. Substantially near surface and open-pittable
  - **VG: 267,600** oz Au Inferred
- New high-grade discoveries

## Experienced Management

- Shawn Ryan – prospecting the Klondike & White Gold districts for the last **25 years**
- Terry Brace – **35 years** of mineral exploration and mine development experience
- PowerOne Group – **20+ years** of experience in investing, financing and managing public natural resource companies

## Strategic Partners

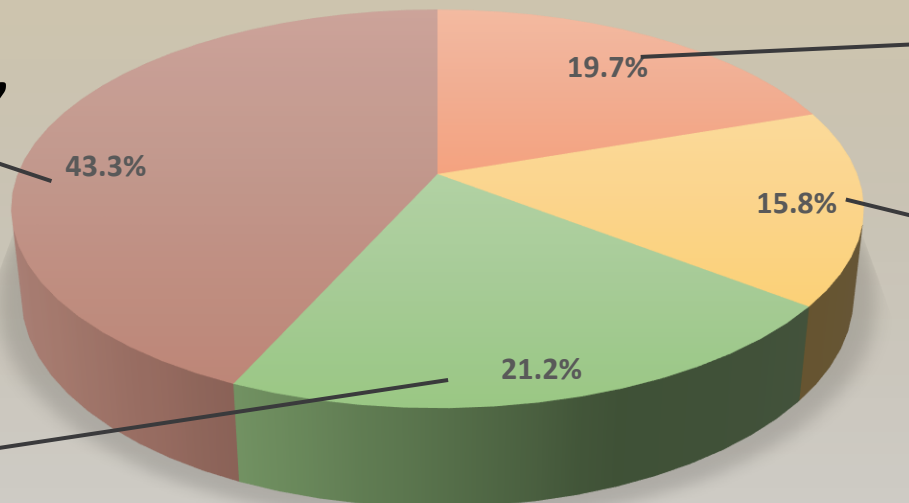
- Financial backing and technical expertise from:
  - Agnico Eagle
  - Kinross
  - Eric Sprott
- Strong capital markets relationships

# CAPITAL STRUCTURE



Eric Sprott,  
Strategic Institutions,  
Public Float

Management  
& Insiders



AGNICO EAGLE



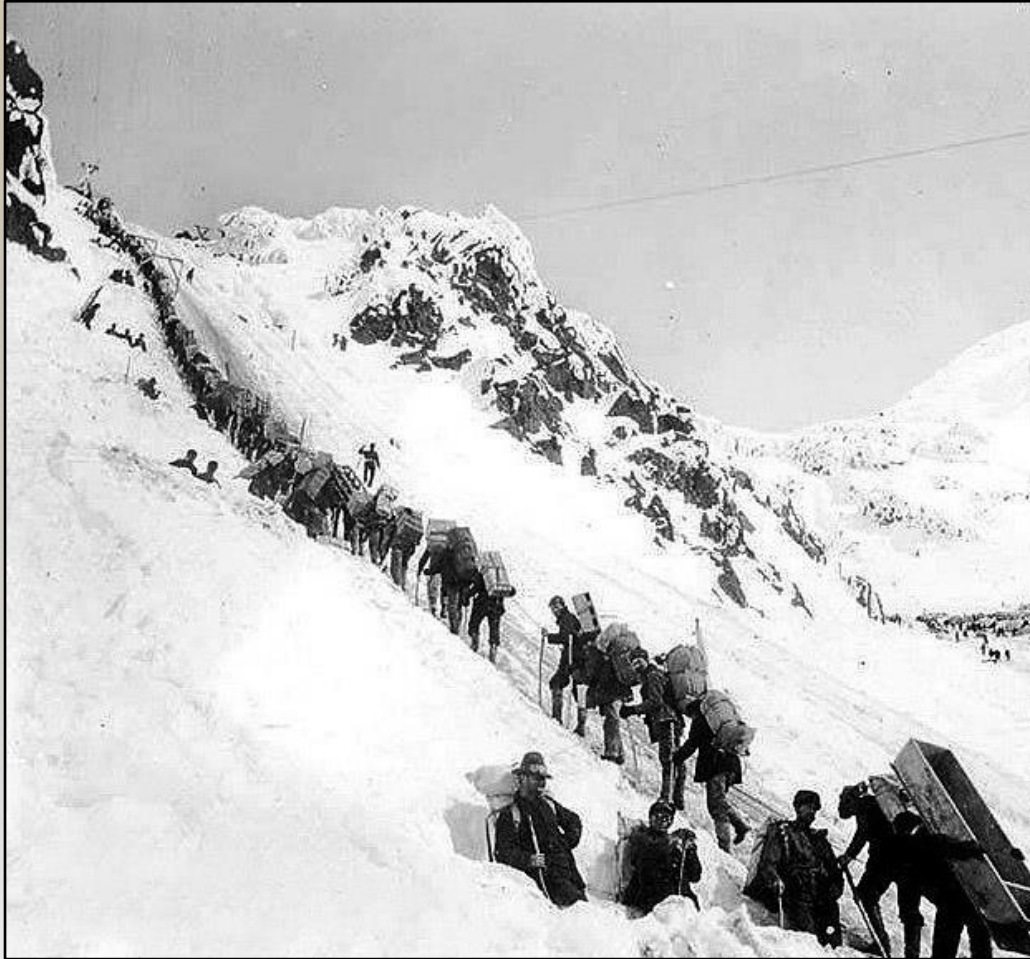
Shares Outstanding: **149.5M** | Warrants: **2.1M** | Options: **5.8M**

Full Analyst Coverage:	
Firm	Recommendation
Eight Capital	Covering: BUY \$3.20
Stifel Financial	Covering: BUY \$2.70
Canaccord Genuity	Watchlist
Clarus Securities	Watchlist
PI Financial	Watchlist

# THE KLONDIKE GOLD RUSH (20Moz Placer)



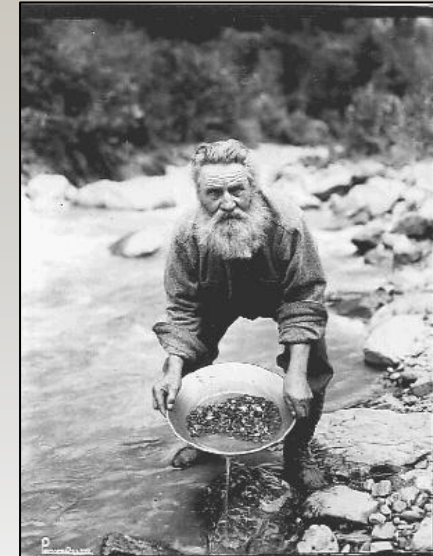
Klondike Gold Rush (1896 – 1899)



Dredge No. 4 (1913 – 1959)



*White Gold Corp. is exploring for gold and the source(s) of the Klondike Gold Rush over 126 years later*



# PROPERTY PORTFOLIO



## Largest Landholder in the District

Claims: >17,500  
 Properties: 30  
 Area: >350,000 Hectares  
 (>865,000 Acres)

40% Of The District

## Extensive Exploration Pipeline

### Early-Stage Properties

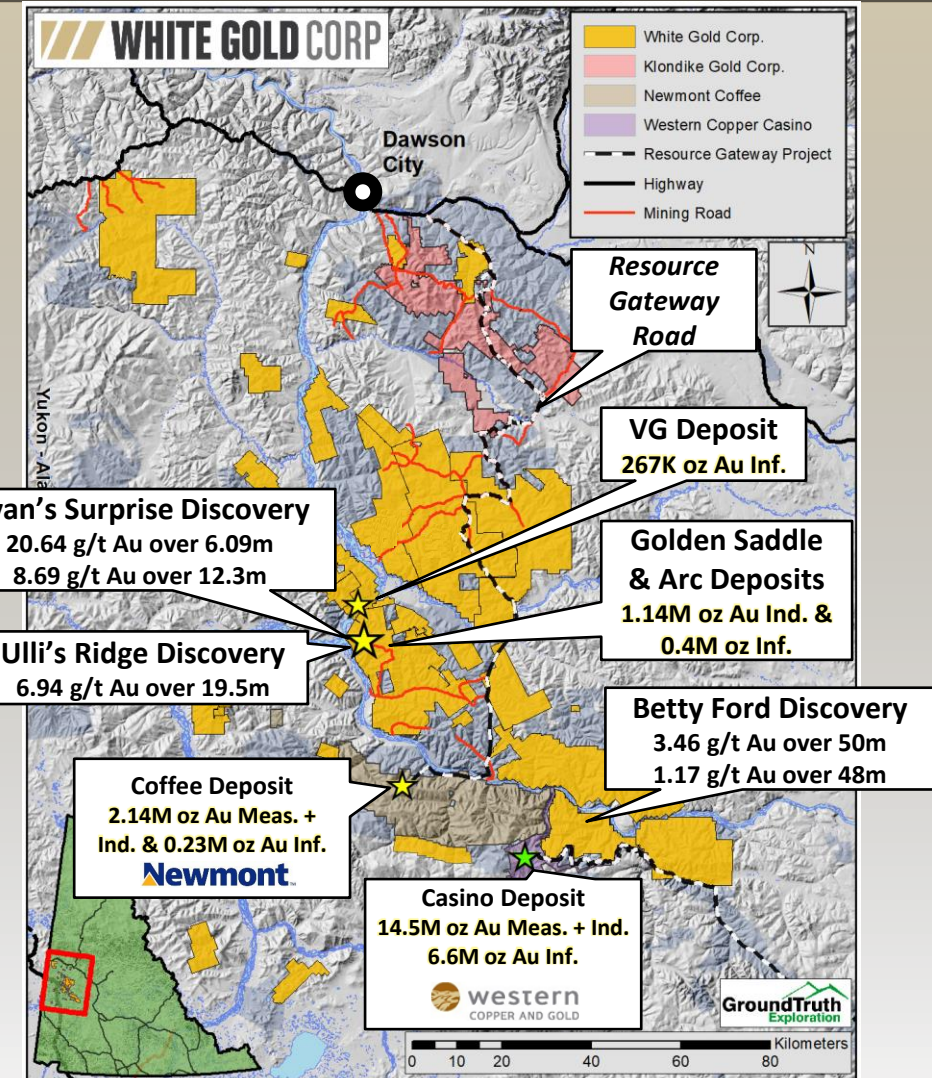
Bonanza  
 Nolan  
 IND  
 Dime  
 Hunker  
 Hayes  
 20+ Additional Properties

### Discovery-Stage Projects

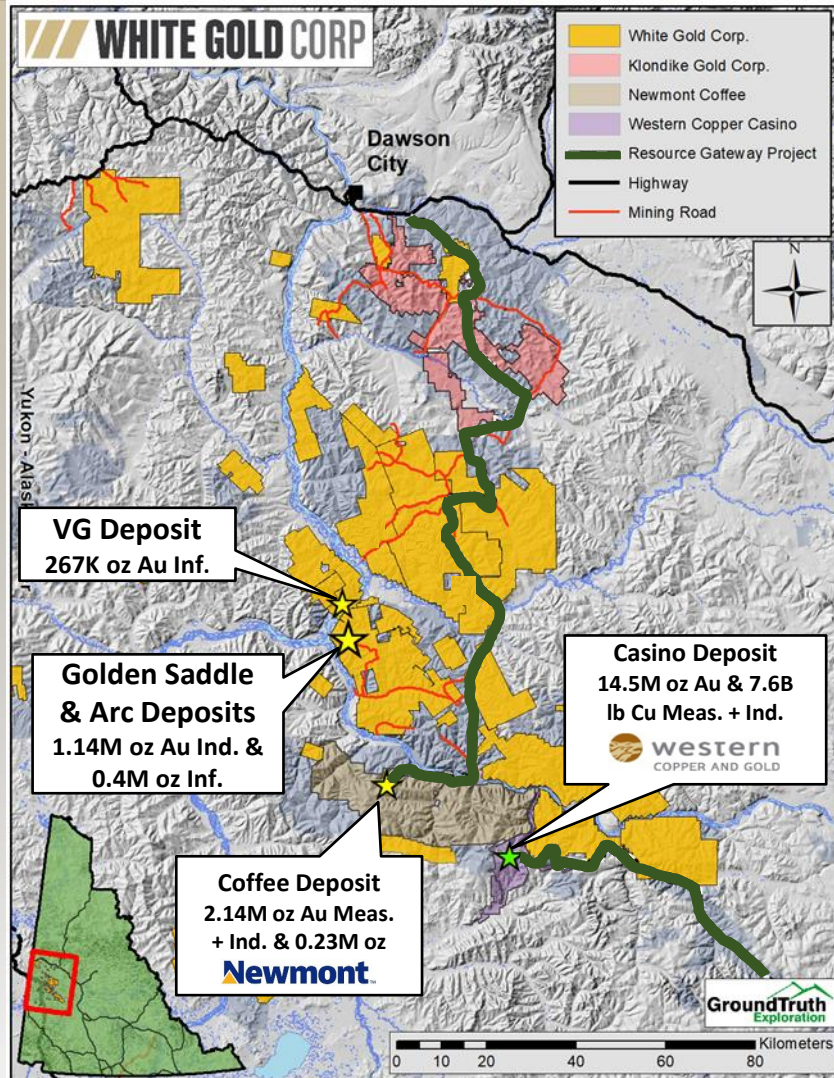
Betty  
 Ryan's Surprise  
 Ulli's Ridge  
 Vertigo  
 JPR Property  
 (Multiple)

### Advanced-Stage Projects

Golden Saddle  
 Arc  
 VG Zone



# RESOURCE GATEWAY ROAD PROJECT

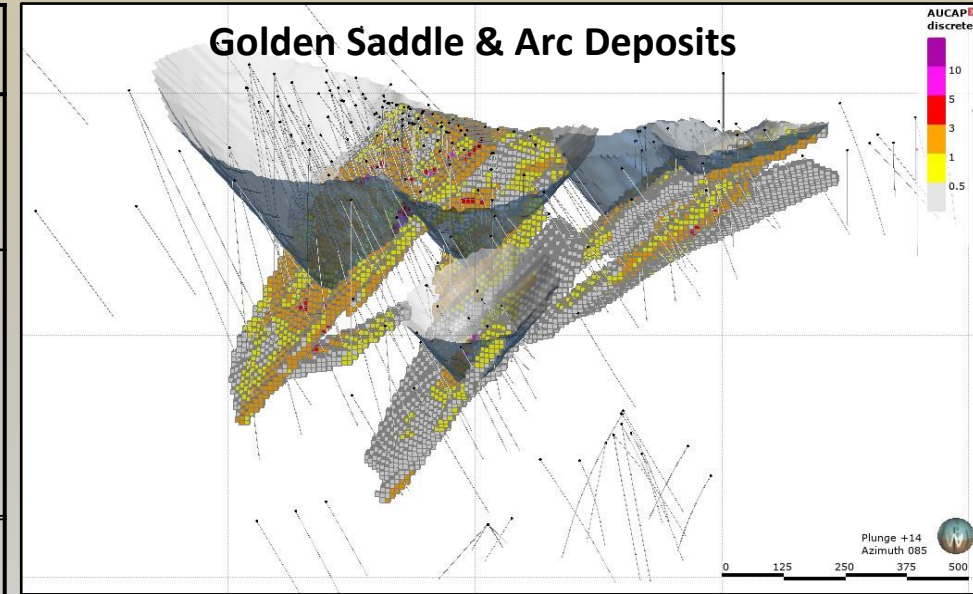


- Joint funding project between the federal and territorial governments and industry designed to make necessary upgrades to existing road infrastructure and provide more reliable access into areas of high mineral potential
- Total contributions for the entire project = \$468,845,000: Federal Government up to \$248 million; Yukon Government up to \$112 million; Industry up to \$109 million
- Project includes a haul road connecting the Coffee project with Dawson City, which passes directly through the heart of WGO'S land package

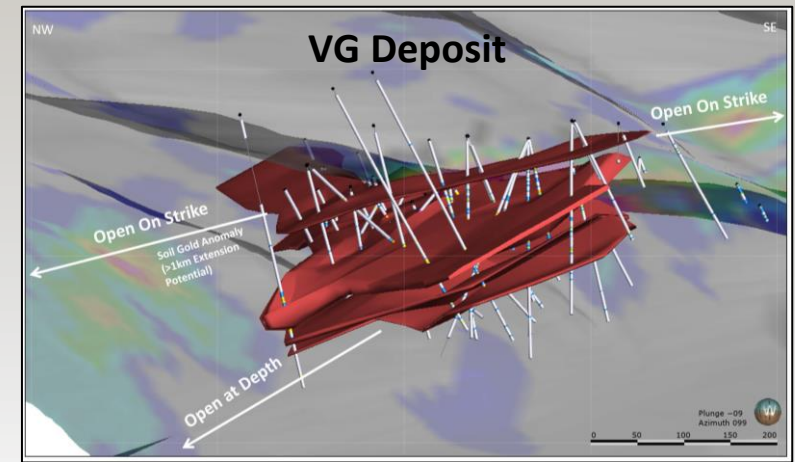
# MINERAL RESOURCES



Deposit	Indicated Resource			Inferred Resource		
	Tonnage (000's)	Grade (g/t)	Contained Gold (ounces)	Tonnage (000's)	Grade (g/t)	Contained Gold (ounces)
GS - Near Surface	14,815	2.31	1,098,300	3,454	1.43	159,100
GS - Underground	143	4.53	20,800	326	4.33	45,300
Arc - Near Surface	613	1.06	20,800	5,221	1.18	197,700
<b>TOTAL</b>	<b>15,571</b>	<b>2.28</b>	<b>1,139,900</b>	<b>9,001</b>	<b>1.39</b>	<b>402,100</b>



Deposit	Indicated Resource			Inferred Resource		
	Tonnage (000's)	Grade (g/t)	Contained Gold (ounces)	Tonnage (000's)	Grade (g/t)	Contained Gold (ounces)
VG - Near Surface	--	--	--	5,264	1.62	267,600





# 2022 EXPLORATION PROGRAM



## \$6 Million Program

### BETTY PROPERTY

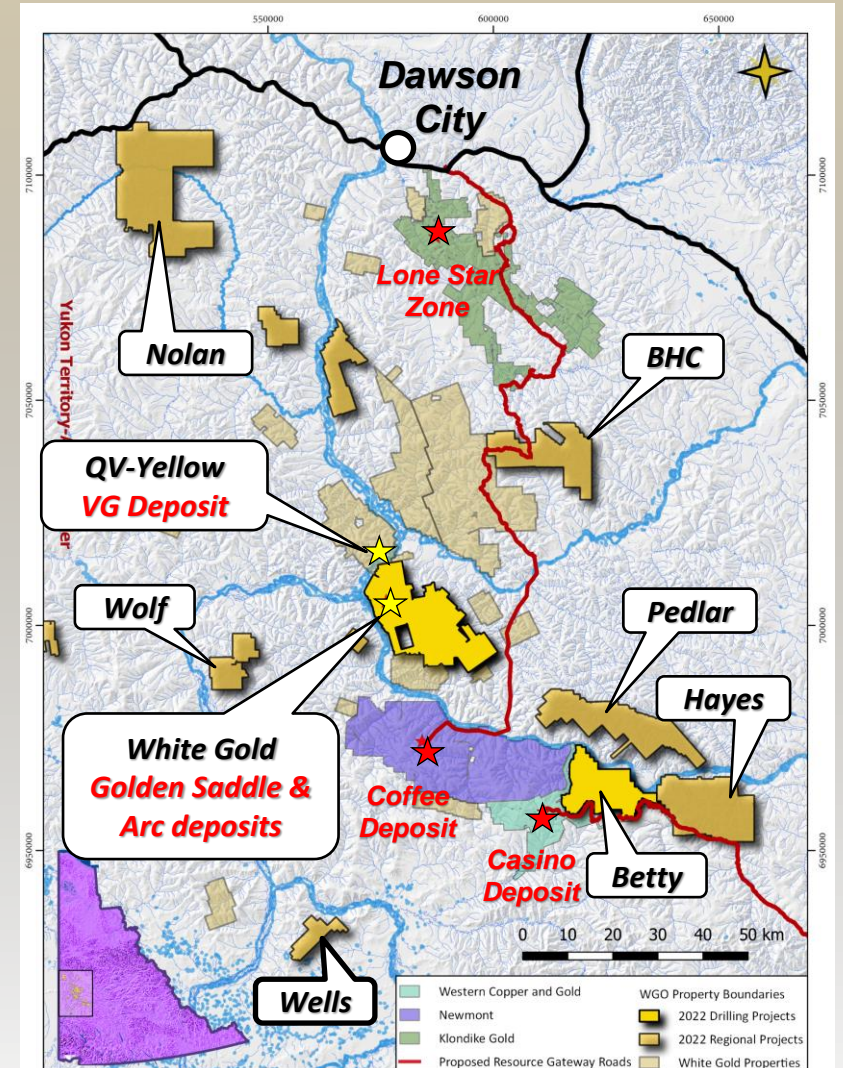
Diamond Drilling – Betty Ford and Mascot Targets (2200m)  
RC Drilling – Betty Ford and Other Targets (1100m)  
RAB Drilling – Mascot Target (550m)

### WHITE GOLD PROPERTY

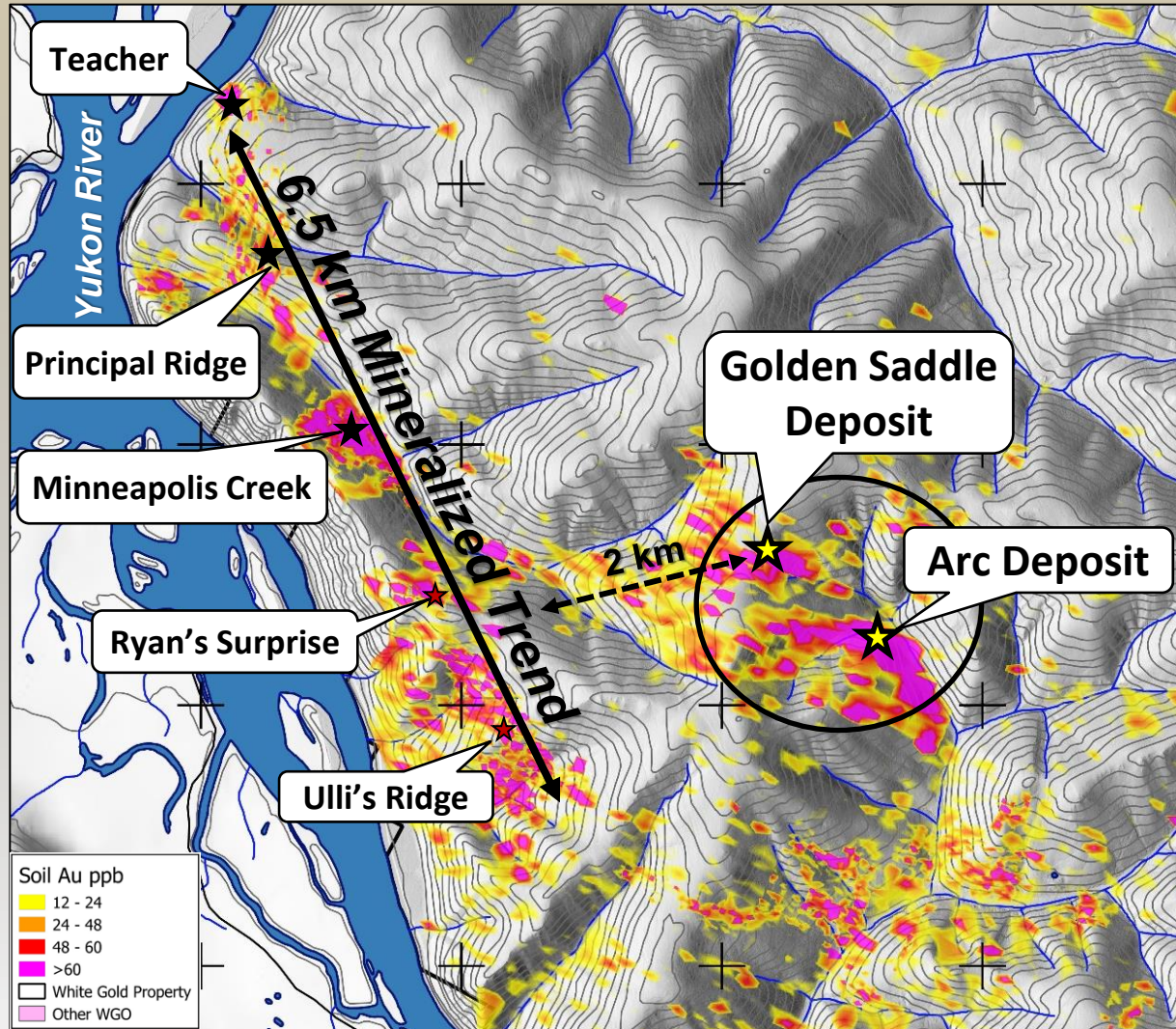
Diamond Drilling – Ryan’s Surprise and Ulli’s Ridge (2675m)  
Focused Prospecting & RAB Drilling – Ryan’s Gold-Arsenic  
Trend (1000m)

### REGIONAL PROGRAM

Geological/structural mapping, Soil Sampling, GT Probe  
Sampling, Drone Magnetics, LiDAR Surveys, Structural  
Geological Interpretations (M. Sanchez), Fluid Inclusion Study



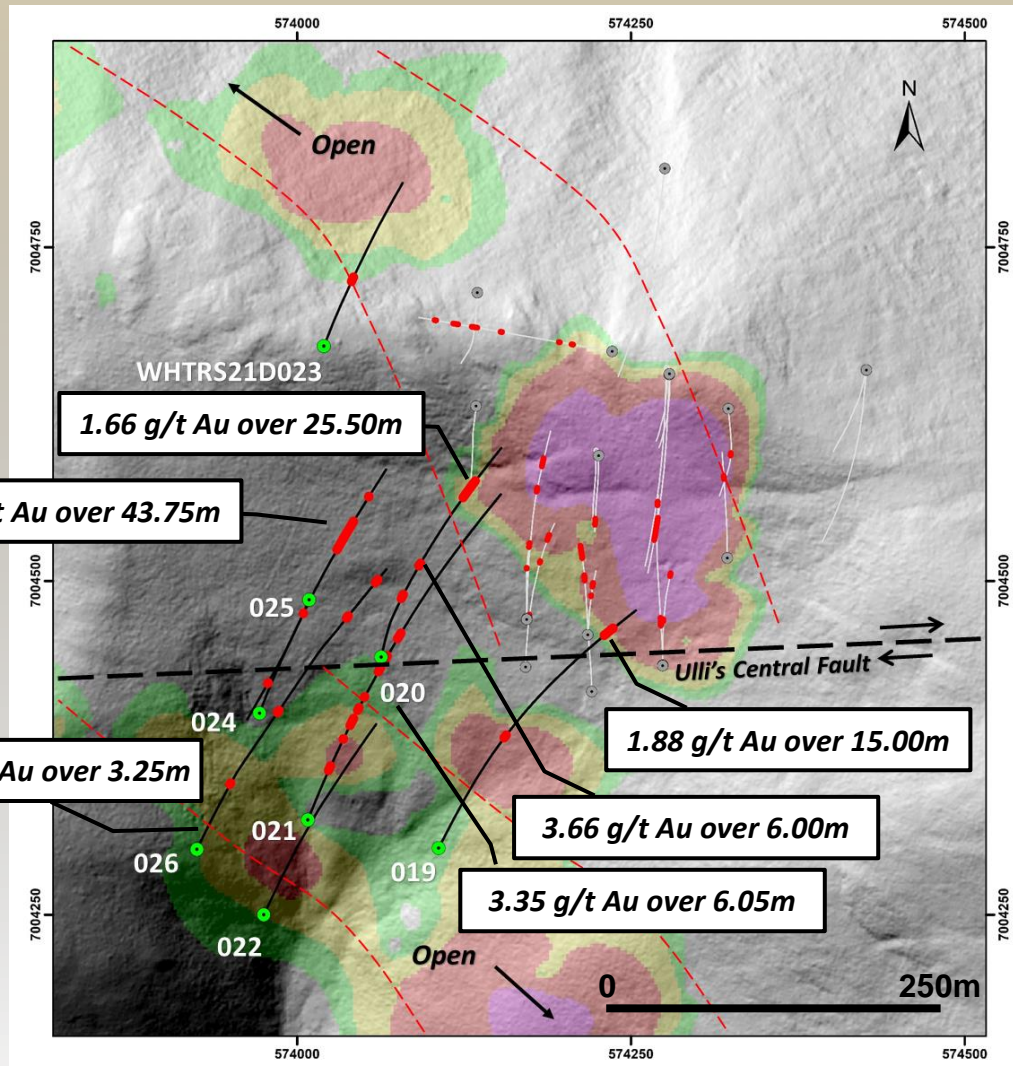
# RYAN'S SURPRISE TARGET



## Ryan's Surprise Drilling Summary – 2018 to 2021

Hole ID	From (m)	To (m)	Length (m)	Gold (g/t)
WHTRYN18RC0001	83.82	89.91	6.09	20.64
WHTRYN18RC0002	121.92	135.64	13.72	5.02
WHTRS20D013	53.00	56.4	3.47	17.40
WHTRS20D017	156.00	159.76	3.76	10.96
WHTRS20D018	187.70	200.00	12.30	8.69
WHTRS21D020	224.50	250.00	25.50	1.66
WHTRS21D026	186.75	190.00	3.25	10.36

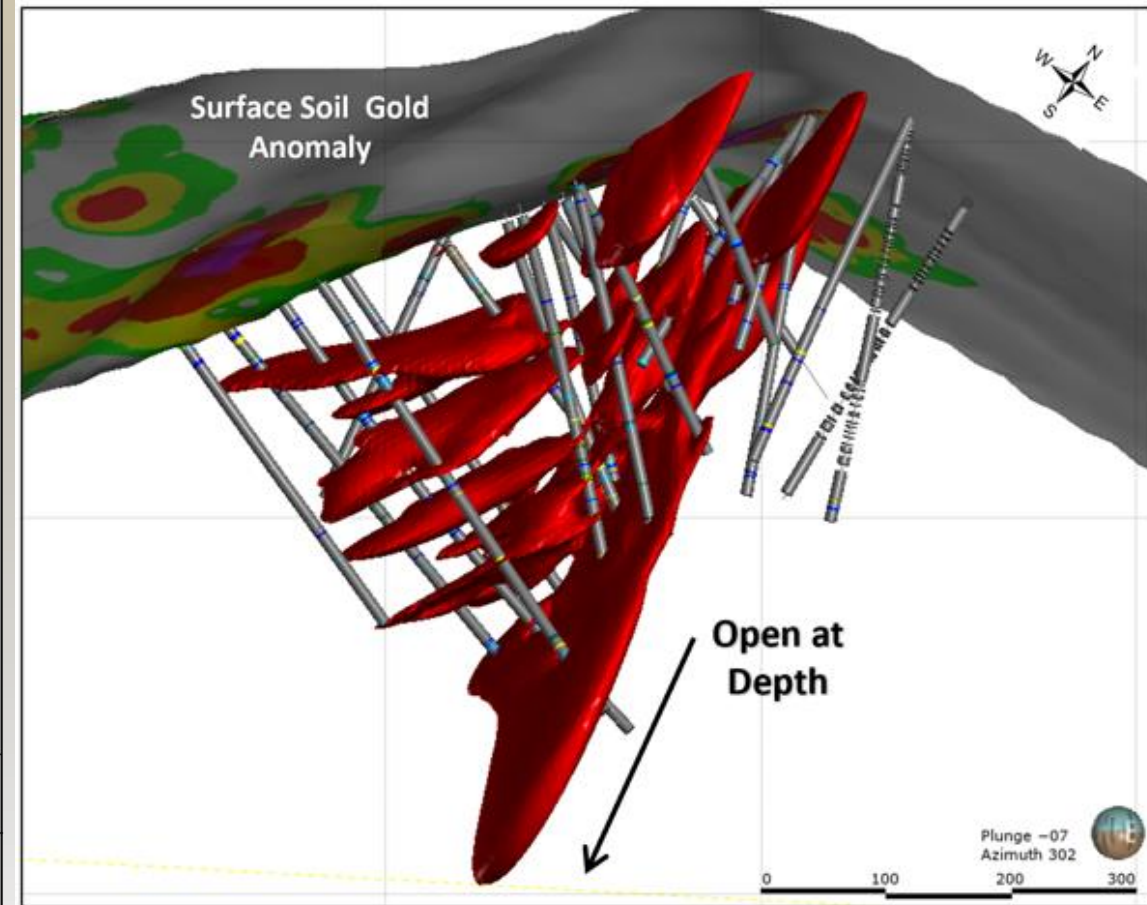
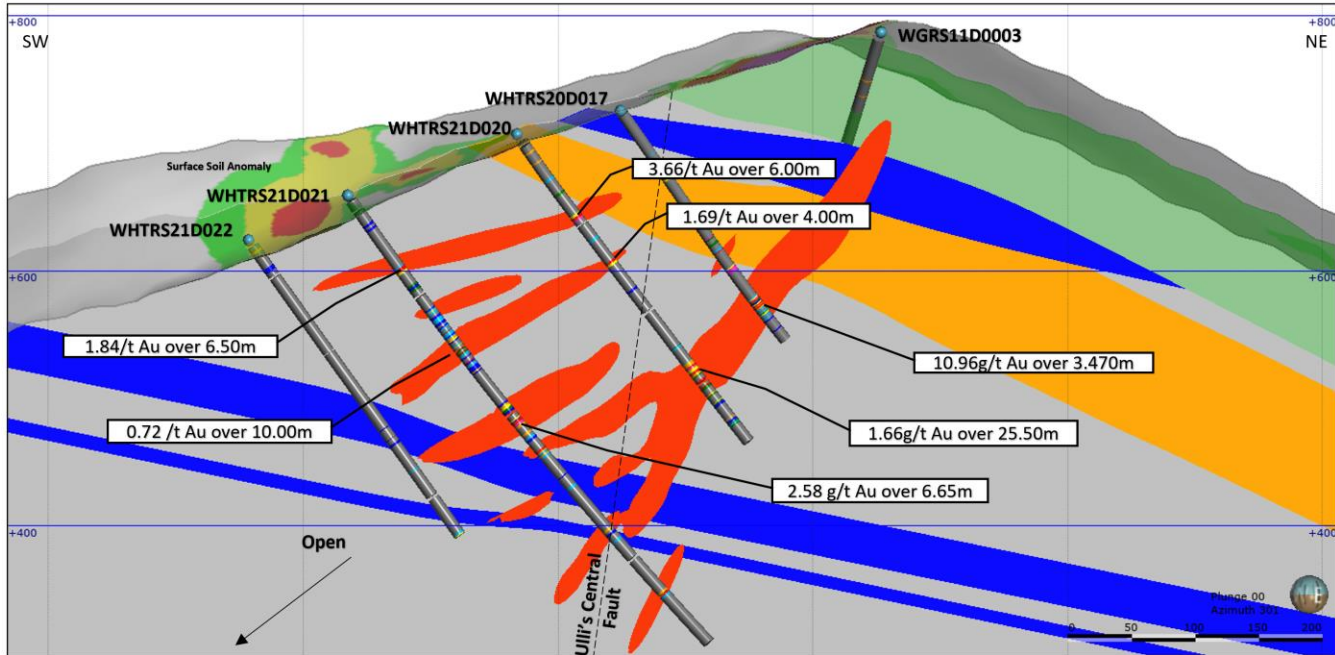
# RYAN'S SURPRISE TARGET – 2021 DRILLING



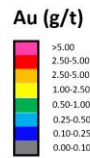
## 2021 Drilling Program (8 DDH 2,561m)

Hole ID	From (m)	To (m)	Length (m)	Gold (g/t)
WHTRS21D019	370.00	385.00	15.00	1.88
WHTRS21D020	78.00	84.00	6.00	3.66
	224.50	250.00	25.50	1.66
WHTRS21D021	68.50	75.00	6.50	1.84
	220.95	227.00	6.05	3.35
	250.22	258.00	7.78	1.38
	397.15	403.00	5.85	2.14
WHTRS21D023	91.35	98.00	6.65	2.58
WHTRS21D024	238.60	282.35	43.75	0.48
WHTRS21D026	186.75	190.00	3.25	10.36
	325.10	328.50	3.40	2.07
	379.00	384.05	5.05	2.09

# RYAN'S SURPRISE STRUCTURE



- Legend**
- Drill Hole
  - Lithologies**
    - Ultramafic
    - Biotite Schist
    - Plagioclase Biotite Gneiss
    - Biotite Quartz Feldspar Gneiss and Quartzite
    - Gold Zone
  - Gold Soil Anomalies

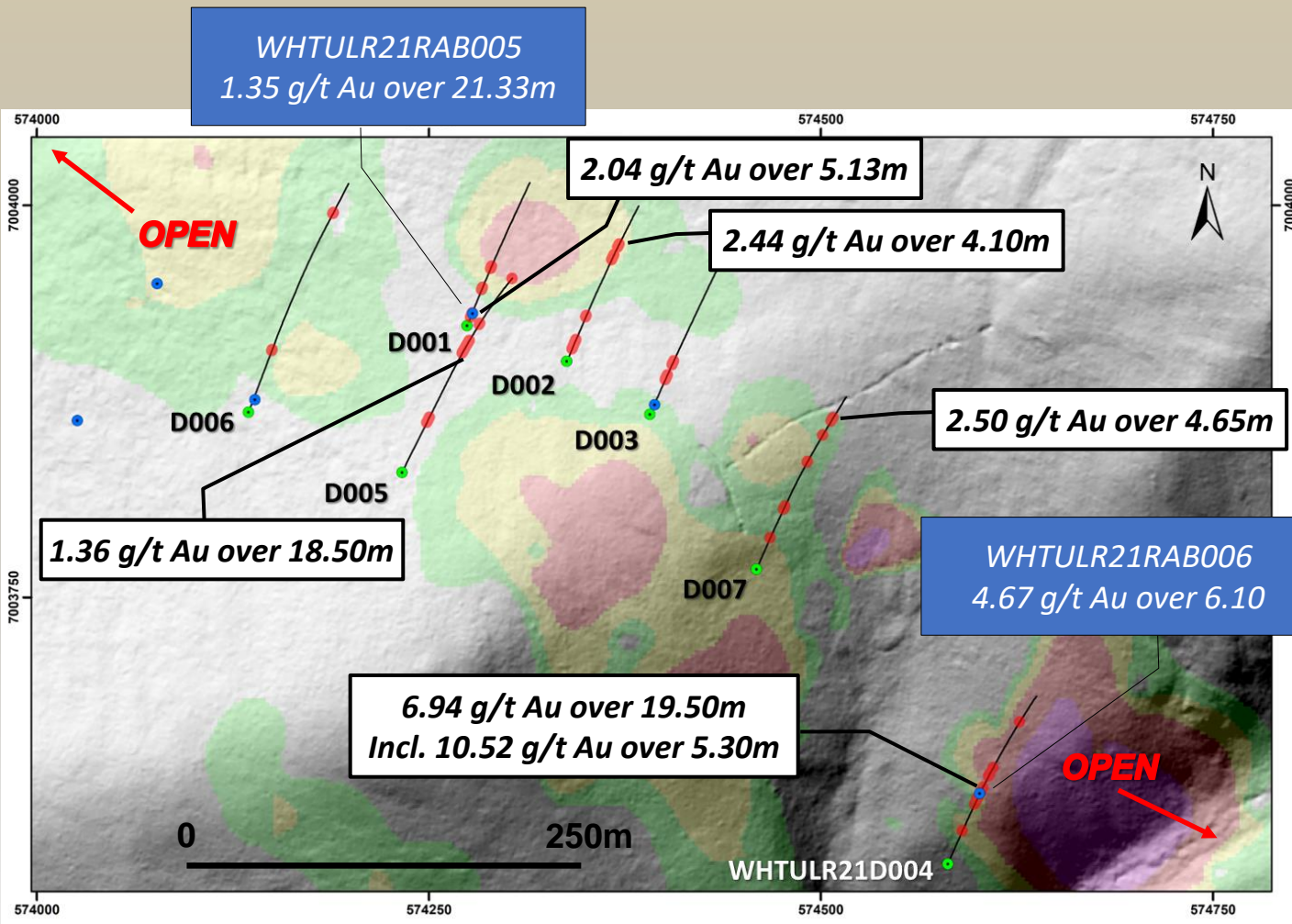


## Ryan's Surprise Conceptual Geological Cross Section



Date  
November 2021

# ULLI'S RIDGE TARGET – 2021 Drilling



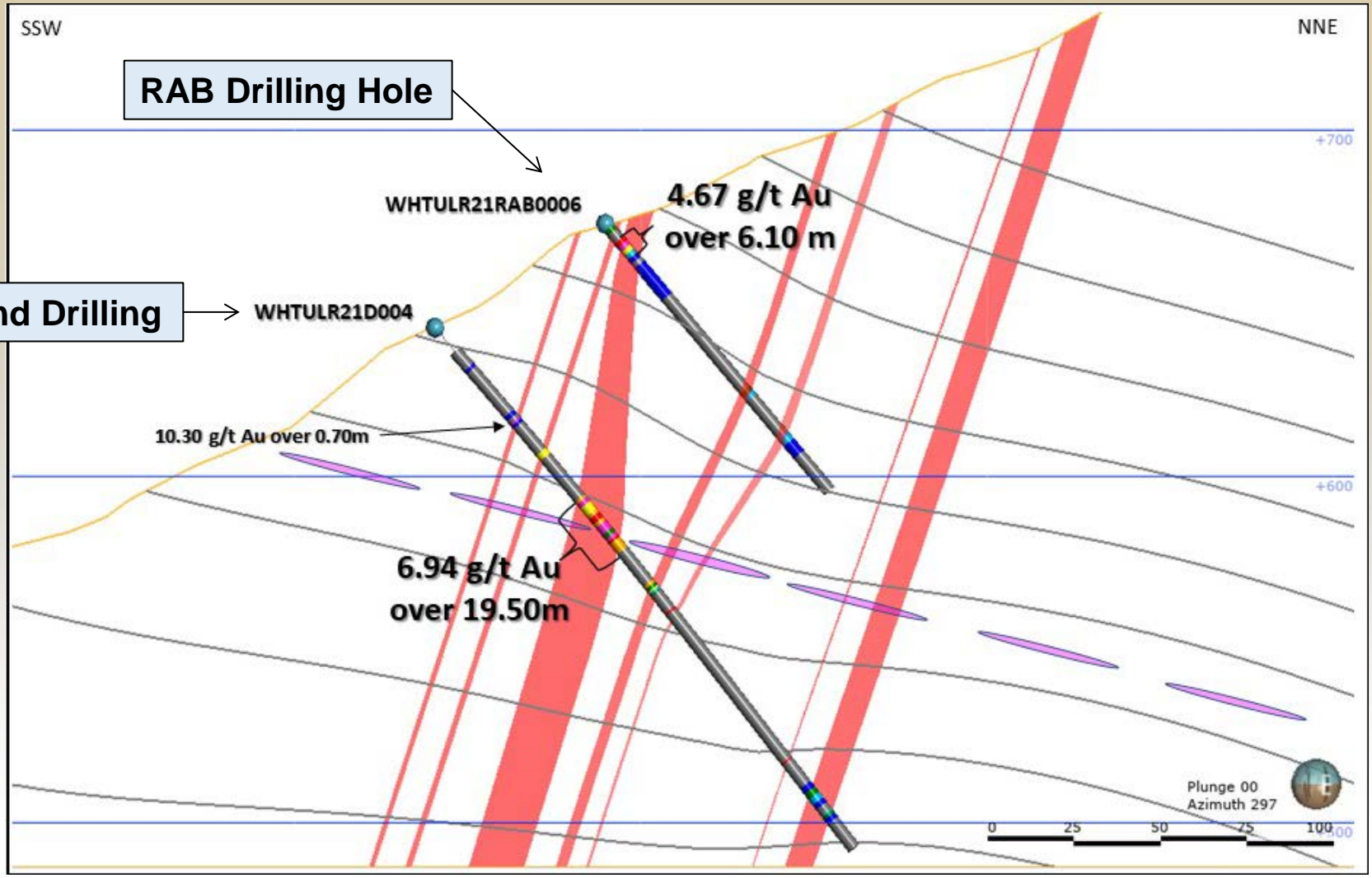
## 2021 Drilling Program (7 DDH, 1,408m)

Hole ID	From (m)	To (m)	Length (m)	Gold (g/t)
WHTULR21D001	9.00	14.13	5.13	2.04
WHTULR21D002	125.50	129.60	4.10	2.44
WHTULR21D003	53.86	58.35	4.49	1.91
WHTULR21D004	35.20	35.90	0.70	10.30
	64.50	84.00	19.50	6.94
<i>Inc.</i>	65.50	67.00	1.50	39.10
<i>And</i>	74.25	79.55	5.30	10.52
<i>Inc.</i>	75.25	76.08	0.83	45.40
WHTULR21D005	139.50	158.00	18.50	1.36
WHTULR21D006	219.60	221.30	1.70	4.26
WHTULR21D007	164.55	169.20	4.65	2.50

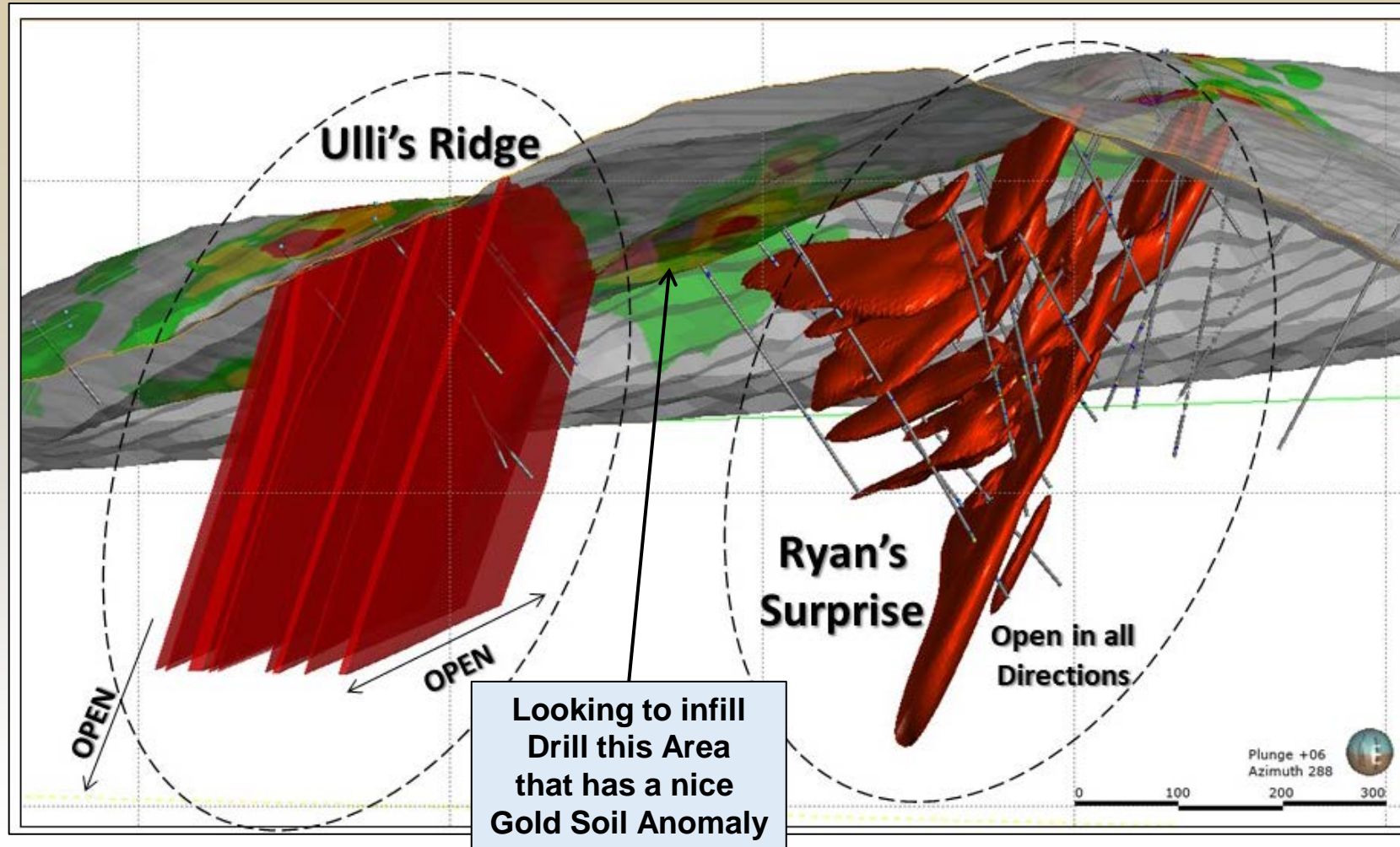
# ULLI'S RIDGE TARGET



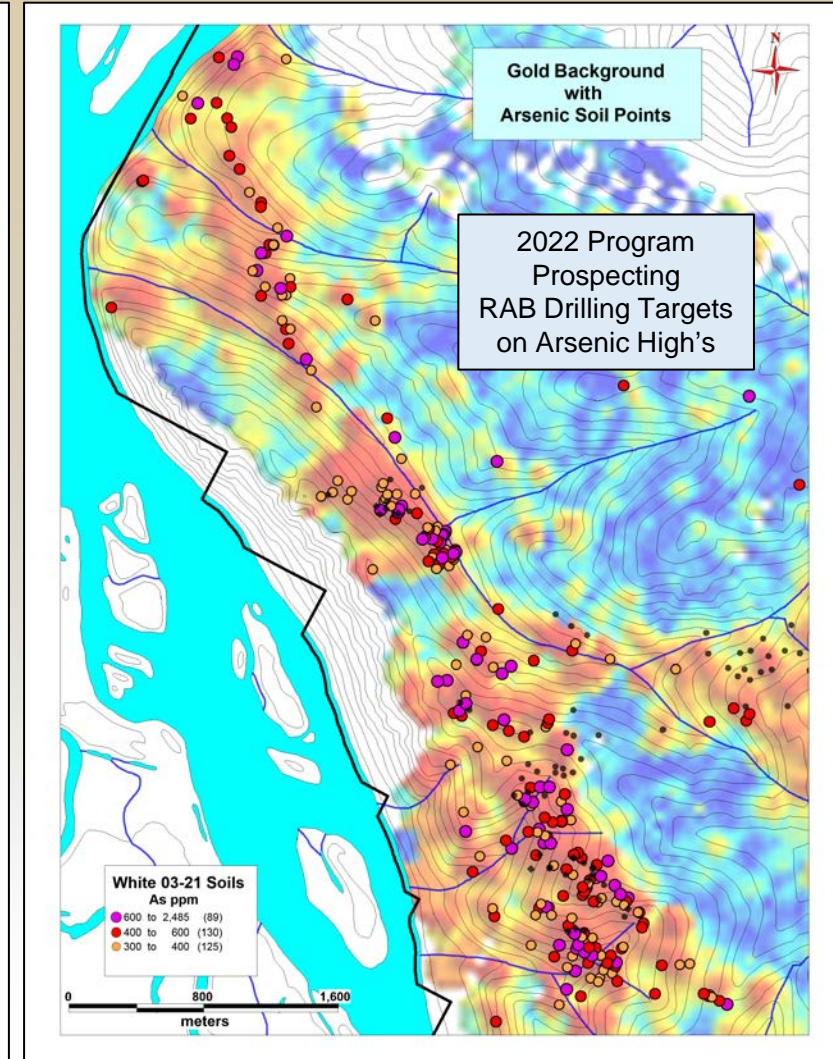
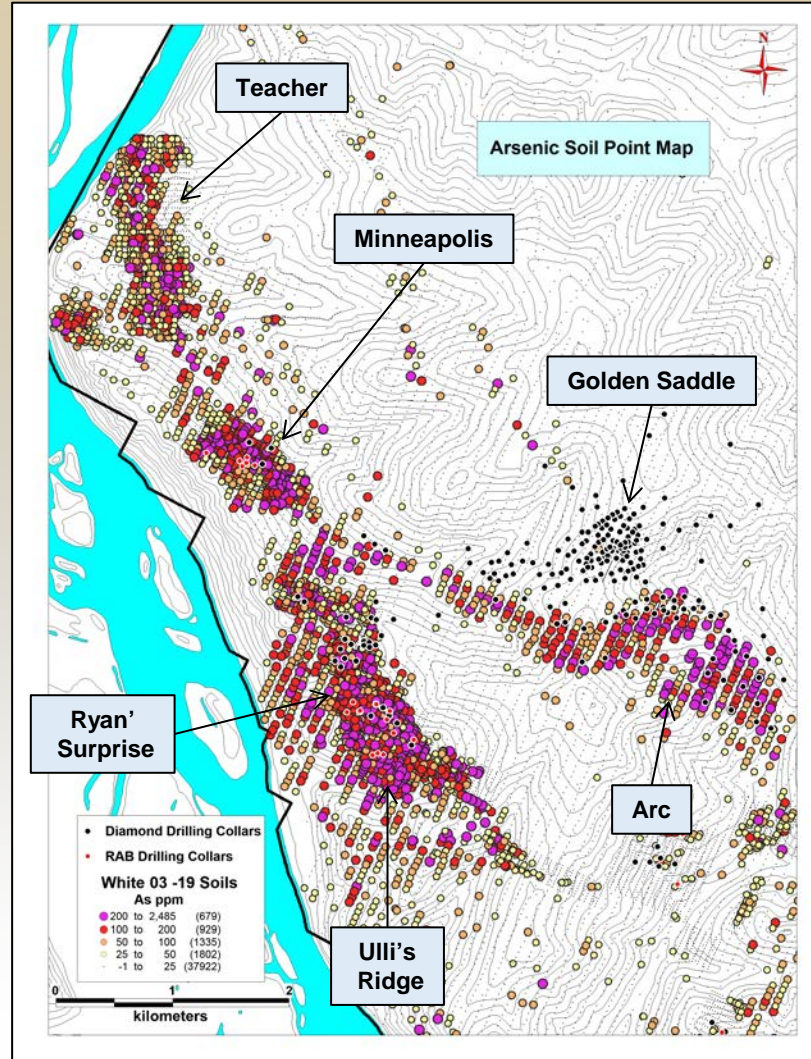
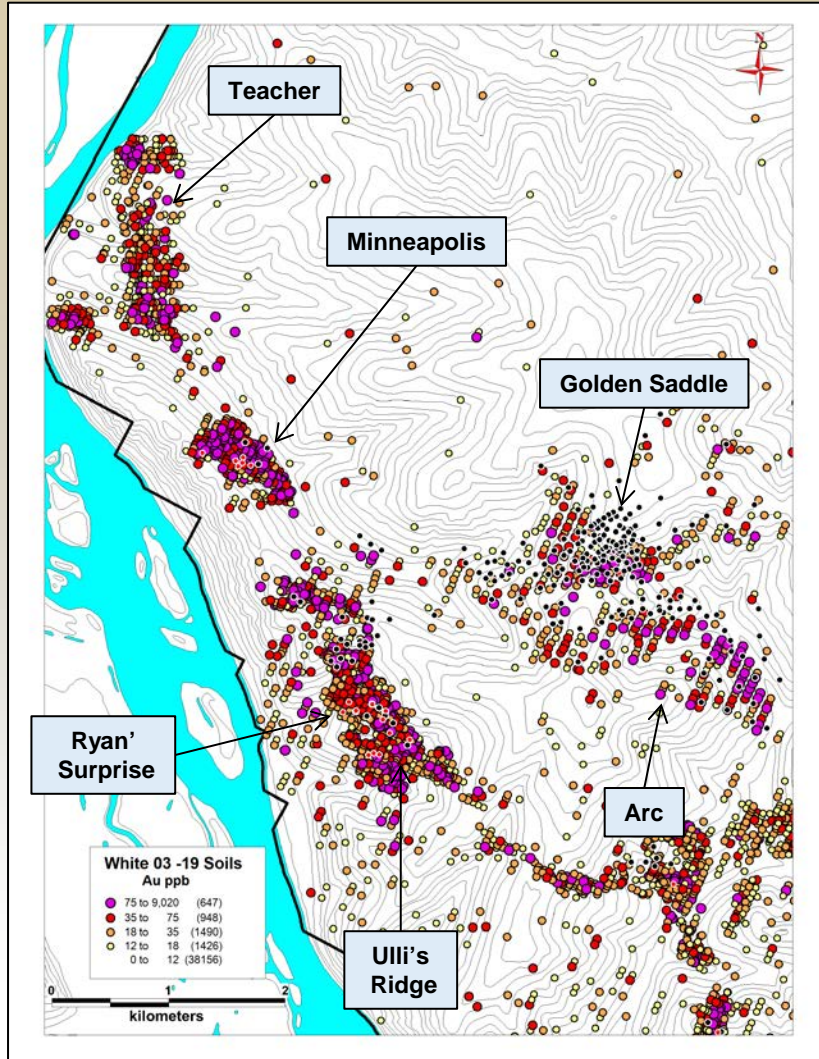
Follow by Diamond Drilling



# ULLI'S RIDGE TARGET

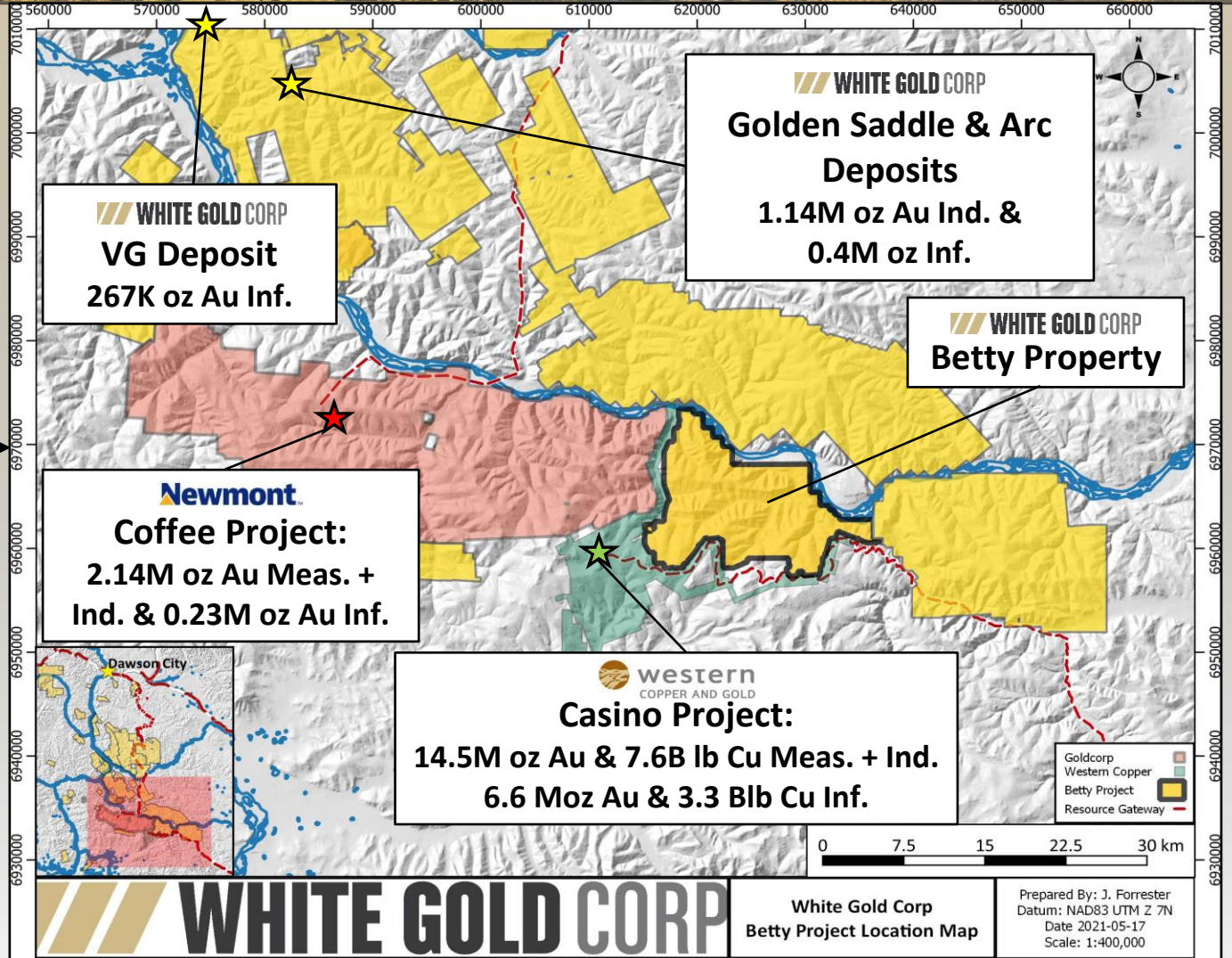
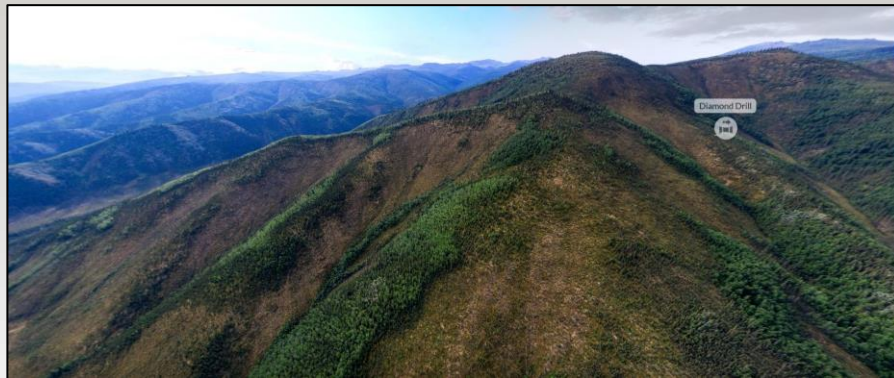
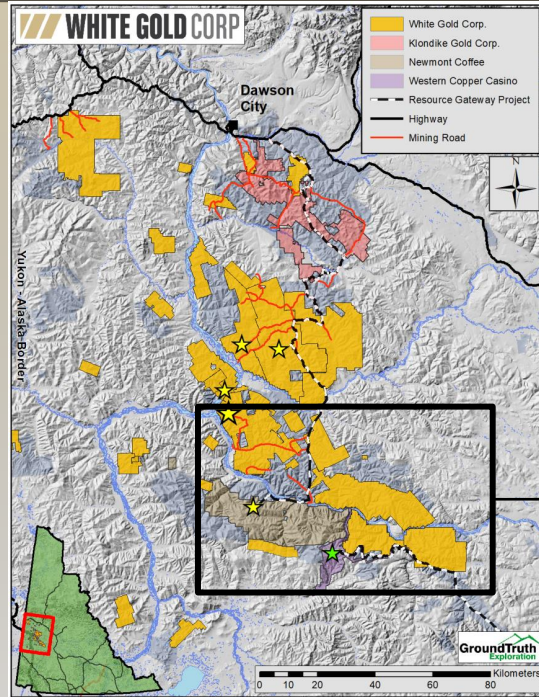


# MINERALIZED TREND - The Blue Sky

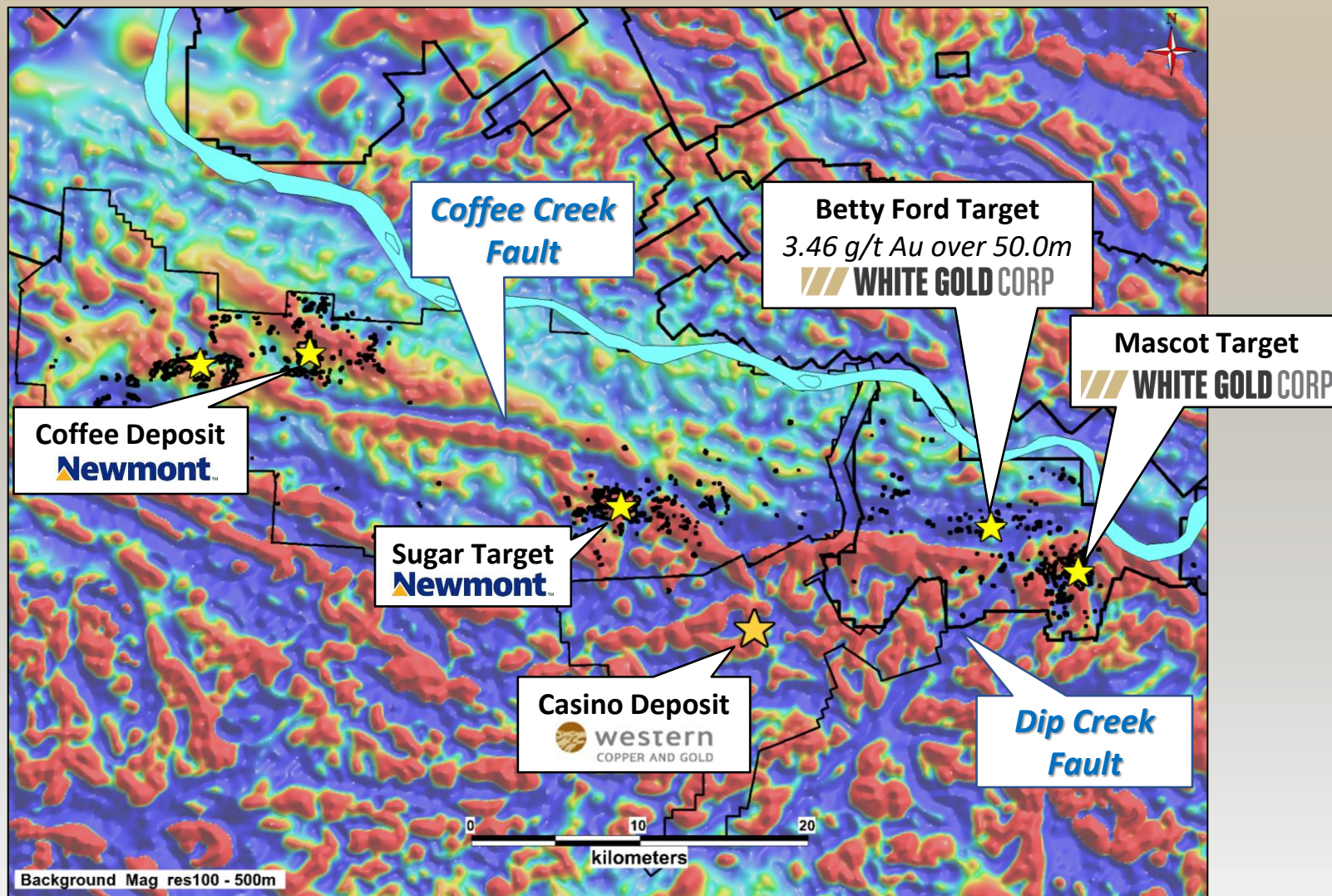




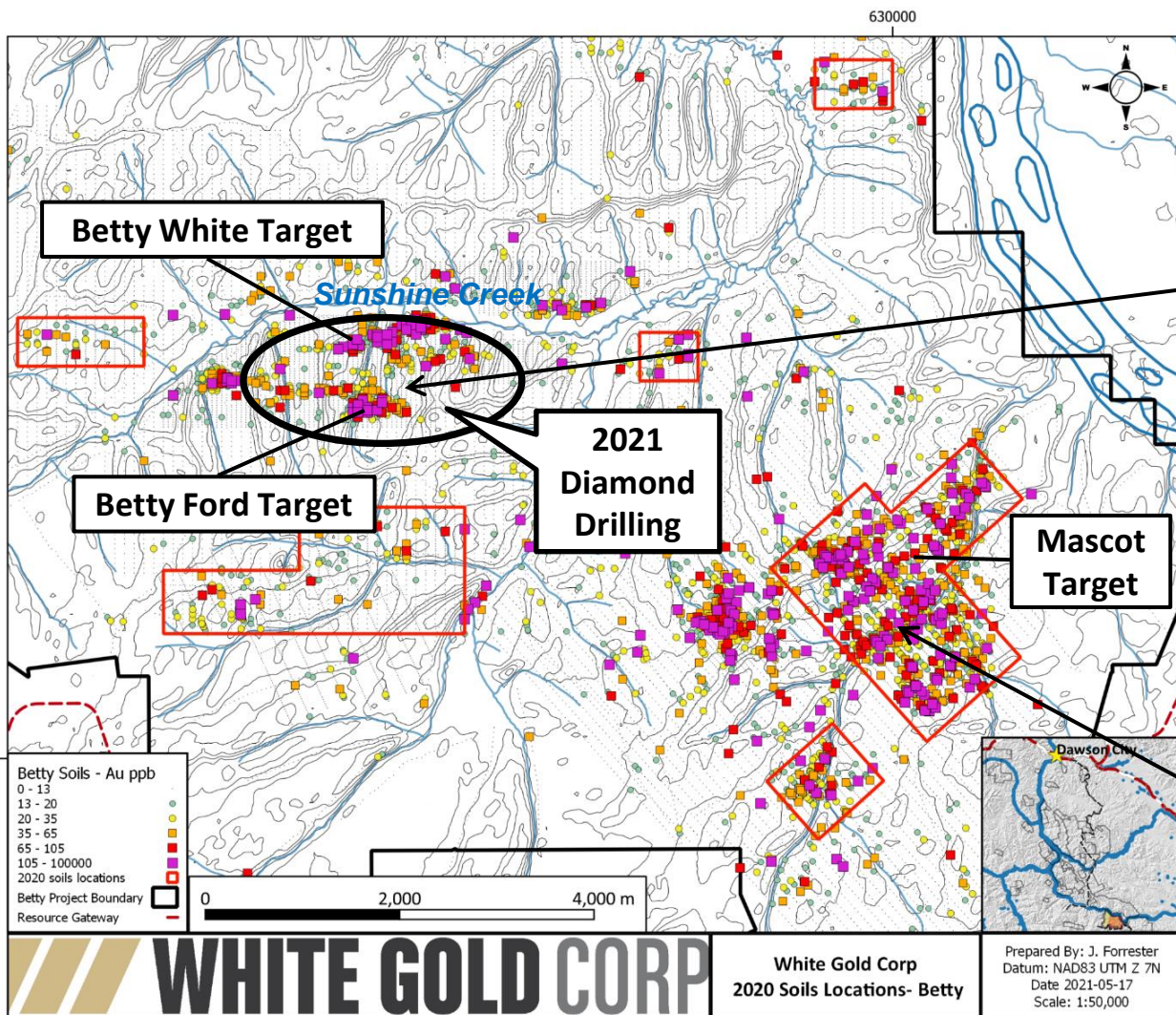
# BETTY PROPERTY



# BETTY PROPERTY



# BETTY PROPERTY HISTORICAL



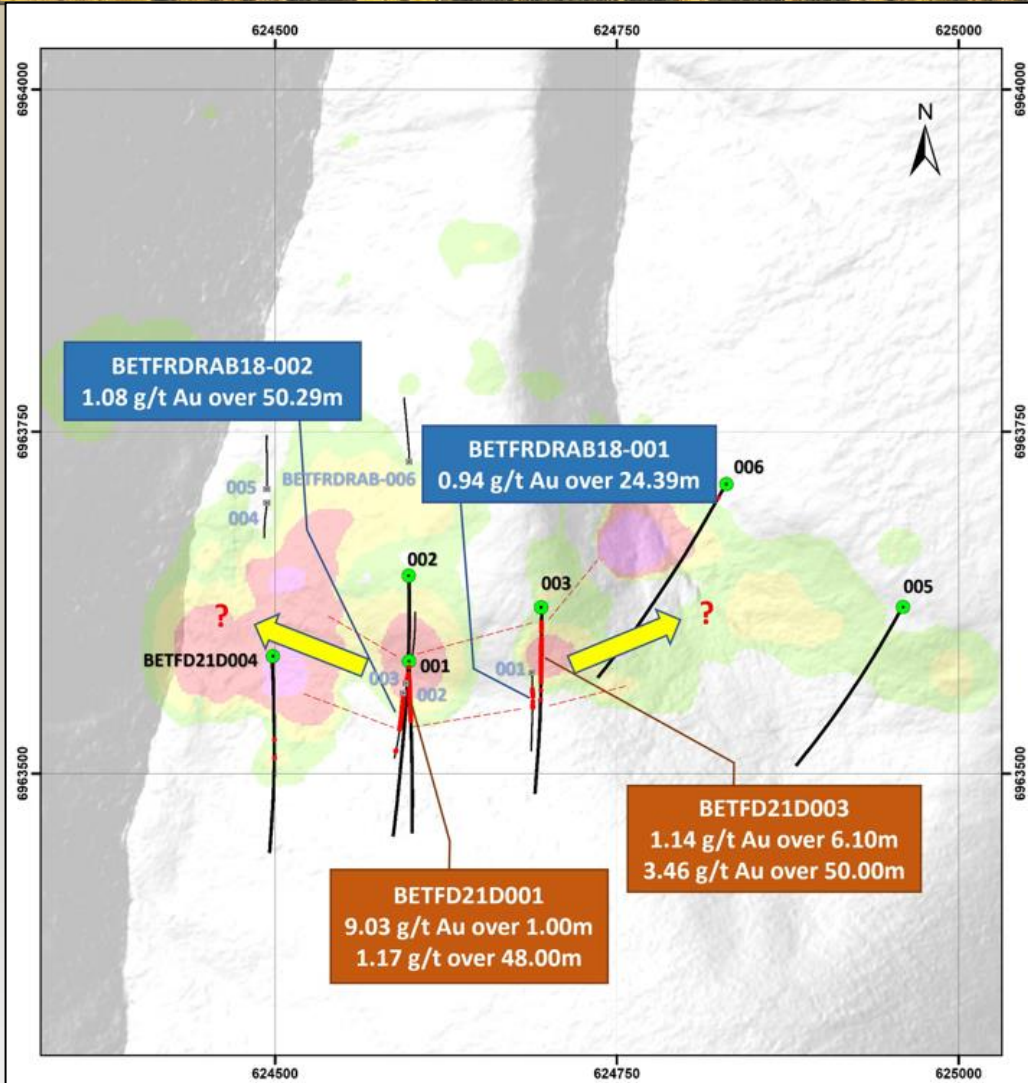
## White Gold Corp. – 2018 RAB Drilling Highlights:

Zone	Hole ID	From (m)	To (m)	Length (m)	Gold (g/t)
Betty Ford	BETFRDRAB18-001	19.81	44.20	<b>24.39</b>	<b>0.94</b>
	incl.	27.43	36.58	<b>9.15</b>	<b>1.72</b>
Betty Ford	BETFRDRAB18-002	4.57	54.86	<b>50.29</b>	<b>1.08</b>
	incl.	19.81	28.96	<b>9.15</b>	<b>2.24</b>
Betty Ford	BETFRDRAB18-003	0.00	13.72	<b>13.72</b>	<b>0.75</b>
	incl.	0.00	4.57	<b>4.57</b>	<b>1.23</b>

## Ethos Gold Corp. – 2012 RC Drilling Highlights:

Zone	Hole ID	From (m)	To (m)	Length (m)	Gold (g/t)
Page	BETR12-022	16.80	57.90	<b>41.10</b>	<b>2.62</b>
	incl.	27.40	38.10	<b>10.70</b>	<b>8.68</b>
Boop	BETR12-012	27.10	30.20	<b>3.10</b>	<b>29.75</b>
Boop	BETR12-014	109.70	120.40	<b>10.70</b>	<b>2.19</b>
	incl.	109.70	112.80	<b>3.10</b>	<b>6.05</b>
Davis	BETR12-007	55.50	76.80	<b>21.30</b>	<b>1.48</b>
	incl.	70.70	76.80	<b>6.10</b>	<b>2.89</b>

# BETTY FORD 2021 DRILLING



Hole ID	From (m)	To (m)	Length (m)	Gold (g/t)
BETFRDRAB18-001	19.81	44.20	24.39	0.94
BETFRDRAB18-002	4.57	54.86	50.29	1.08
BETFD21D001	19.00	67.00	48.00	1.17
<i>Inc.</i>	23.00	50.00	27.00	1.54
<i>Inc.</i>	24.00	34.00	10.00	2.38
BETFD21D0033	33.00	83.00	50.00	3.46
<i>Inc.</i>	44.00	74.00	30.00	4.47
<i>Inc.</i>	44.00	63.00	19.00	5.25

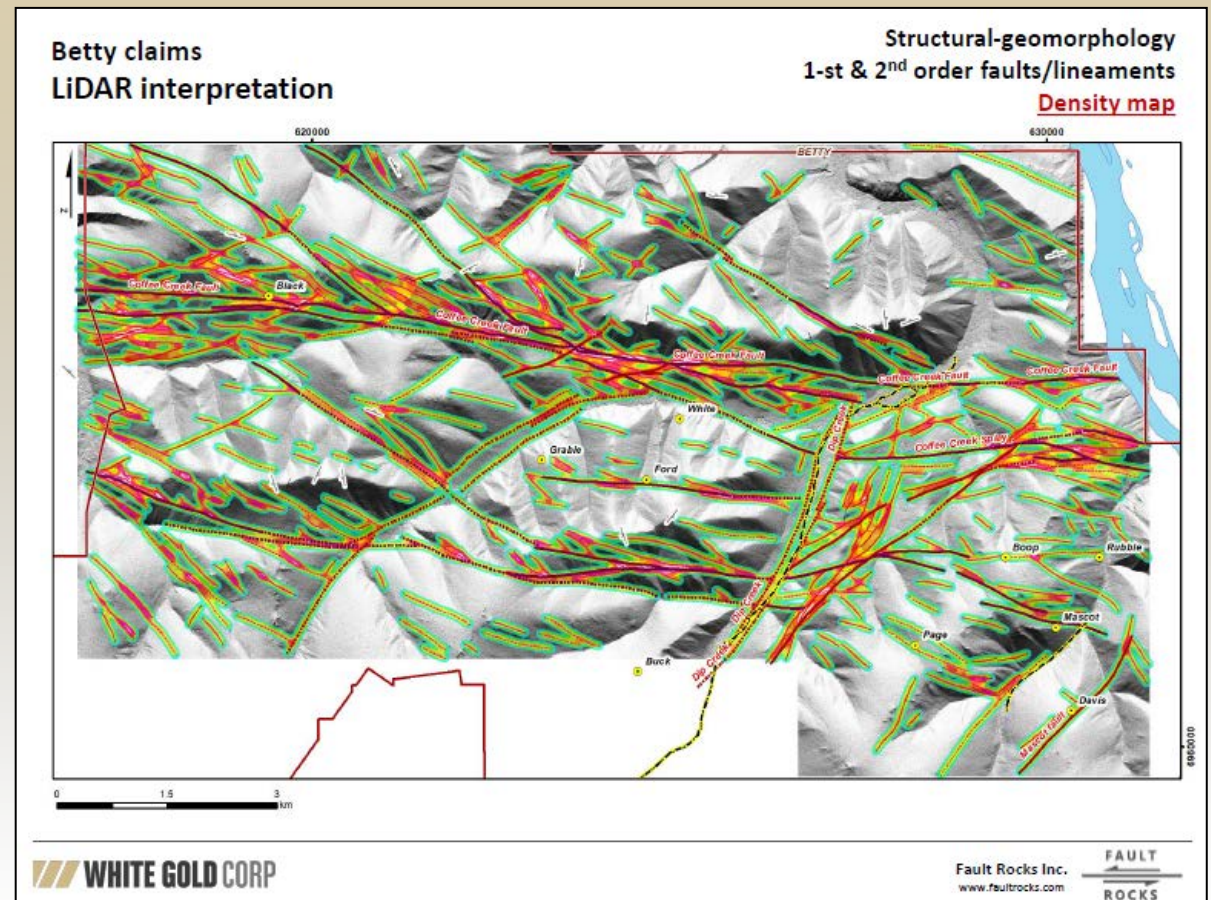
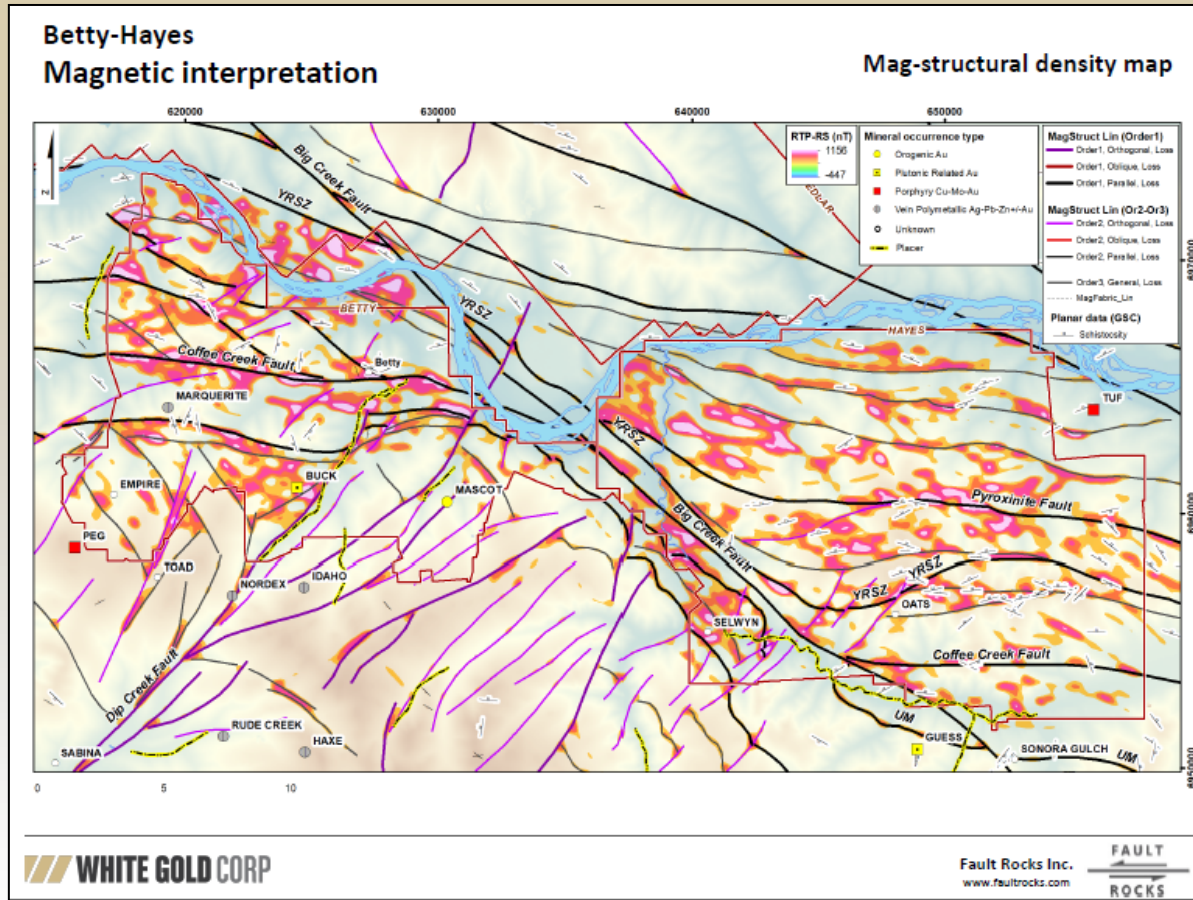
# BETTY FORD TARGET CROSS SECTION



# BETTY FORD TARGET 21D003 CORE



# Betty New Structural Interpretation WHITE GOLD CORP



# 2022 PROGRAM KEY TAKEAWAYS



- 7,500m of drilling total: 5,000m diamond drilling, 1,000m RC drilling & 1,500m of RAB drilling
- Drilling at Betty Ford to test extensions of 3.46 g/t Au over 50m and 1.17 g/t Au over 48m zones
- Maiden diamond drilling at Mascot to test mineralized zones identified in historical RC drilling which intersected 2.62 g/t Au over 41.1m and 29.75 g/t Au over 3.1m
- Additional RC and RAB drilling on other prospective targets at the Betty property
- Diamond drilling on the White Gold Property to test gap area between Ryan's Surprise and Ulli's Ridge, and to test high-grade gold discovery of 6.94 g/t Au over 19.5m
- Focused prospecting on 6.5km gold-arsenic mineralized trend (Ryan's trend) located 2km west of Golden Saddle and Arc, with high priority anomalies tested with RAB drilling
- Extensive regional early-stage program on 10 other properties to identify and define new targets

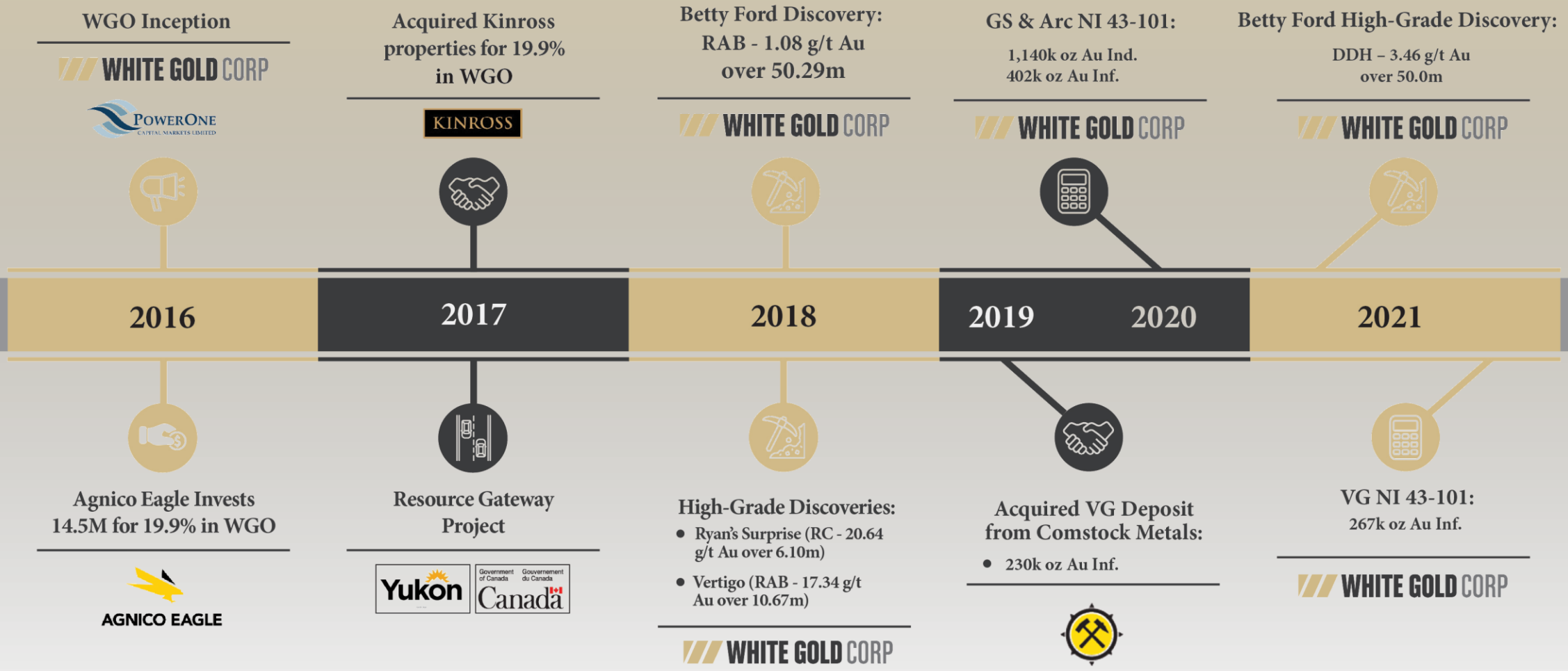




TSX-V: WGO | OTC: WHGOF | FRA: 29W

82 Richmond St E, Toronto, Ontario M5C 1P1  
ir@whitegoldcorp.ca  
(647) 930-1880

# KEY EVENTS TIMELINE

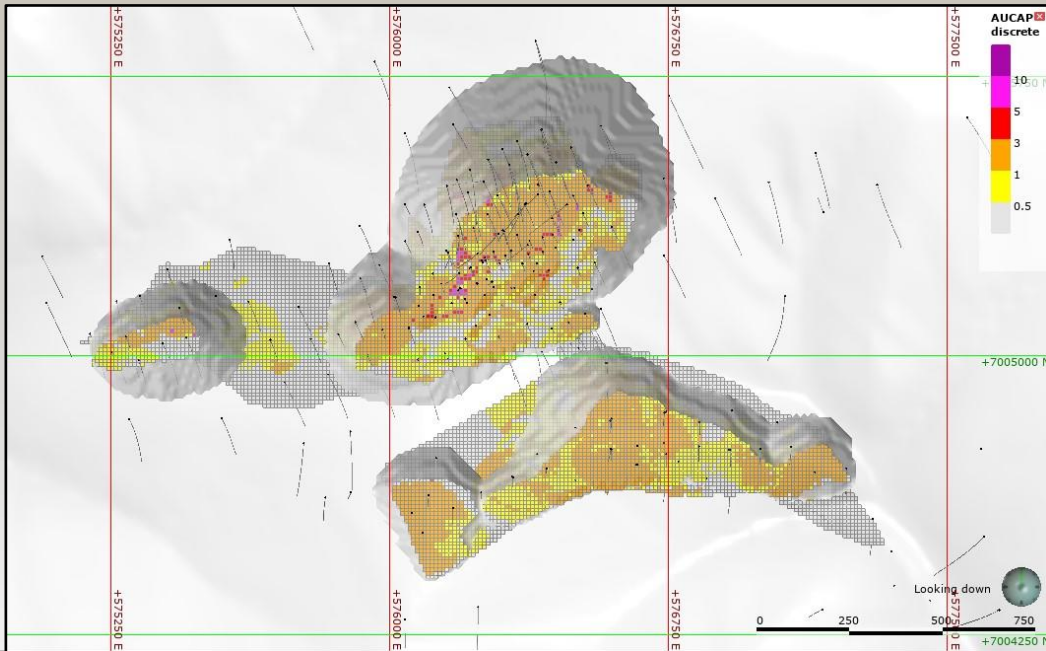
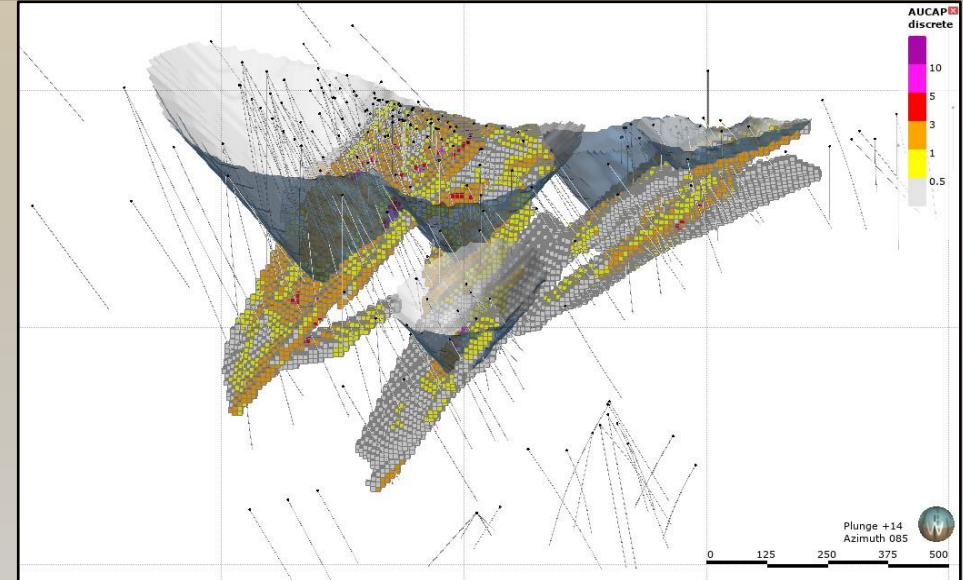


# GOLDEN SADDLE & ARC DEPOSITS

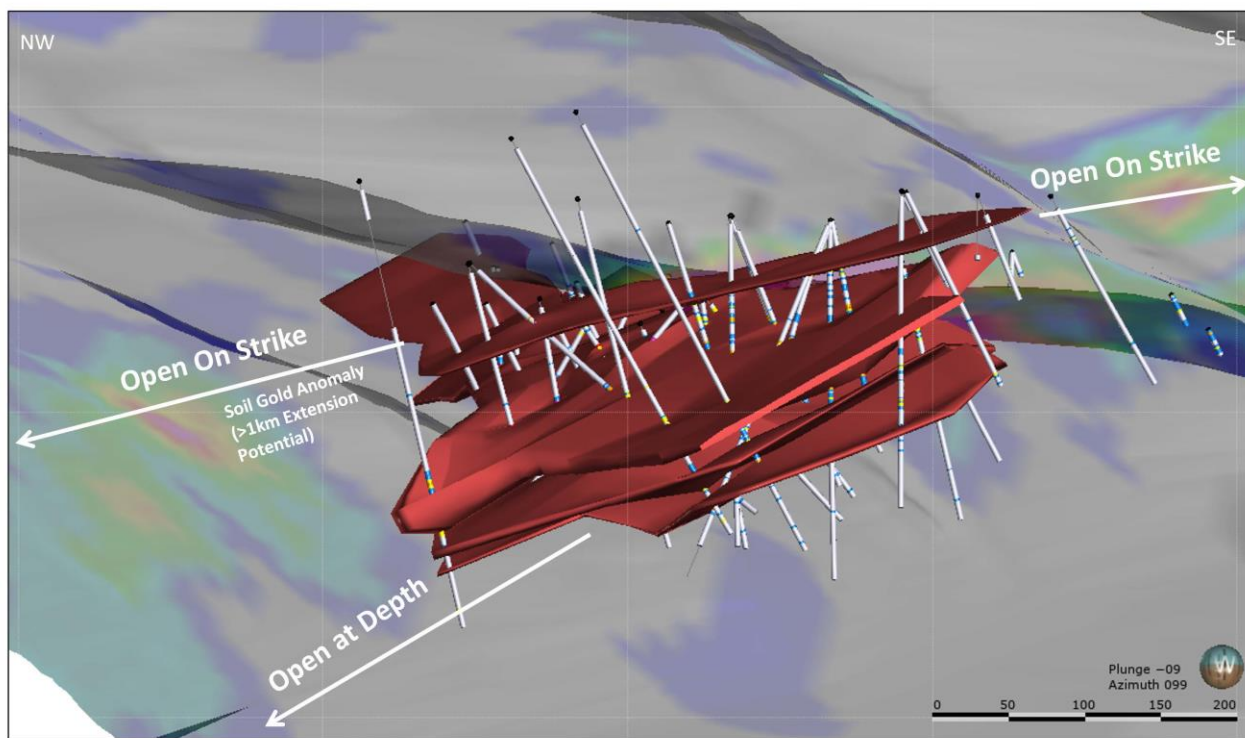


## The Project:

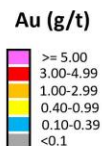
- First discovery in the White Gold District
- Located 95 km south of Dawson City, Yukon
- Airstrip, barge access, and a fully operational exploration camp
- Mineralization known to extend beyond the limits of the current resource
- Excellent untested exploration potential in surrounding area



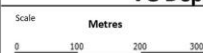
2020 Mineral Resource Estimate (White Gold Corp.)						
Area	Type	Classification	Cut-off (g/t)	Tonnes (000's)	Grade (g/t)	Contained Gold (oz)
GS	Open Pit	Indicated	0.5	14,815	2.31	1,098,300
		Inferred		3,454	1.43	159,100
	Underground	Indicated	3	143	4.53	20,800
		Inferred		326	4.33	45,300
Arc	Open Pit	Indicated	0.5	613	1.06	20,800
		Inferred		5,221	1.18	197,700



- Legend**
-  Drill Hole
  -  Gold Bearing Structure
  -  Gold Soil Anomalies



QV Project  
VG Deposit Isometrics of VG Zone



Date  
November 2021

Figure 3

- Located approximately 11 km north of the Golden Saddle deposit, with similar geology and gold mineralogy
- 267,600 oz Au inferred
- VG deposit remains open along strike and downdip

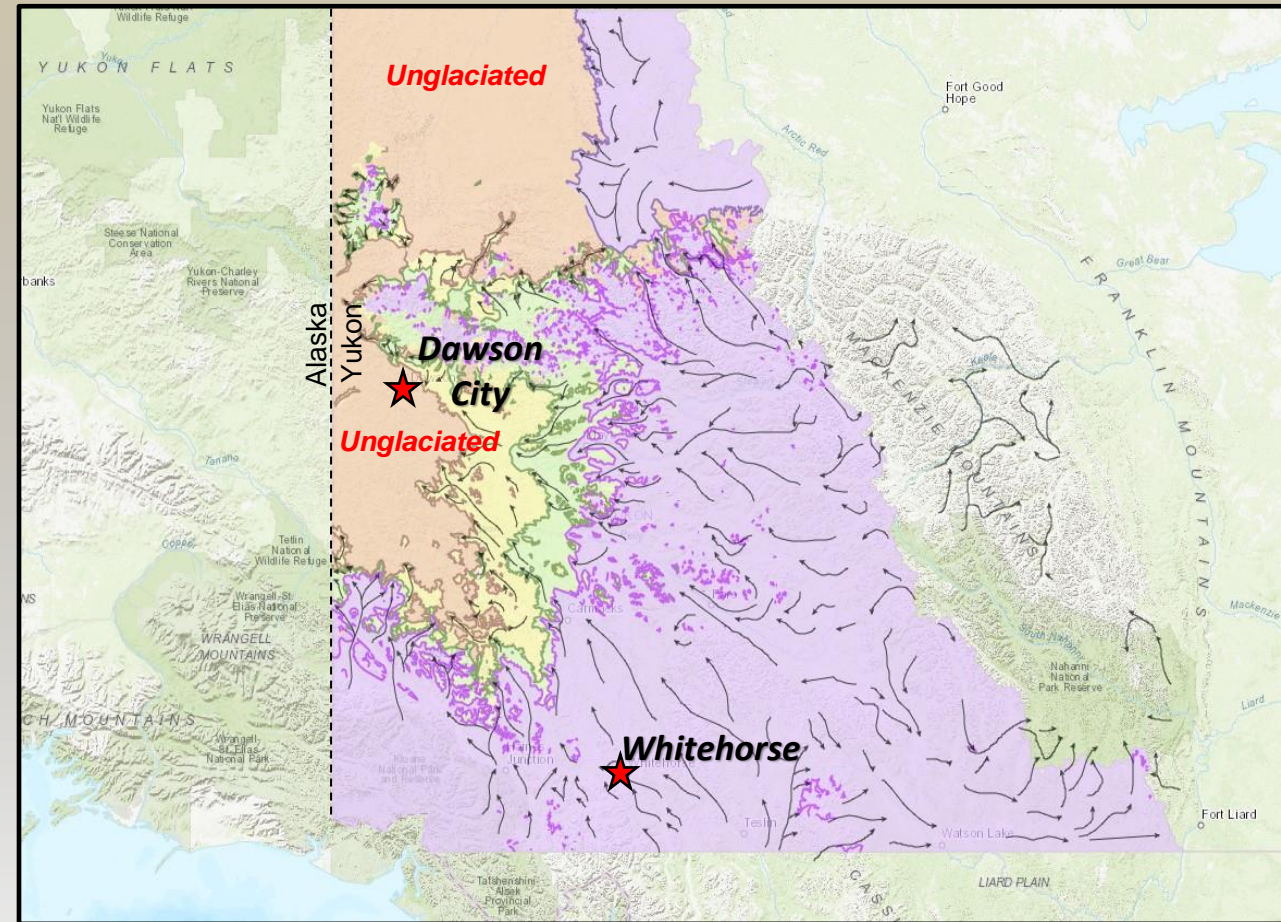
### 2021 Mineral Resource Estimate

Deposit	Classification	Cut-off (g/t)	Tonnes (000's)	Grade (g/t)	Contained Gold (oz)
VG	Inferred	0.5	5,264	1.62	267,600

# EXPLORATION APPROACH – UNIQUE TERRAIN



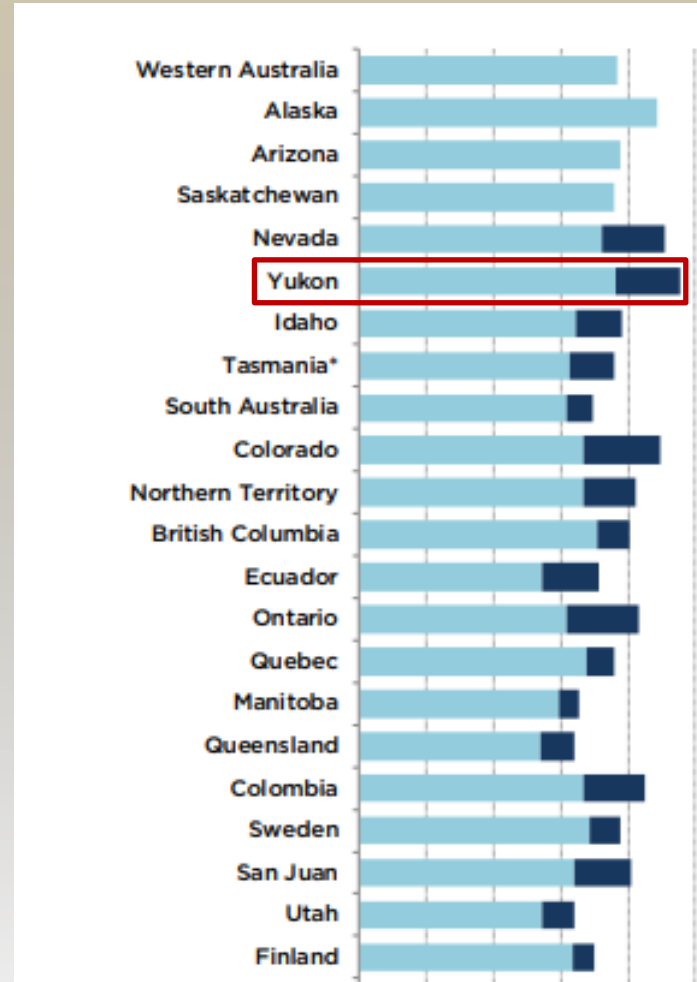
- While the rest of Canada was almost entirely covered by glacial ice during the last ice age, portions of the Yukon were ice-free – including the White Gold District
- Large ice-free region extended from central and northern Yukon across Alaska, and westward to northern Asia – forming a vast ice-free wilderness area where herds of grazing mammals and their predators (many now extinct) roamed
- An extensive thin (generally  $\leq 2\text{-}3\text{m}$ ) veneer of overburden is characteristic, directly impacting exploration approach:
  - ❑ Strong initial focus on soil geochemistry surveys (400,000+ samples in company database) – finding the haystacks...
  - ❑ Successful utilization of GT Probe (soil-bedrock interface sampling) and low-cost Rotary Air Blast (RAB) drilling to better screen and define surface targets before diamond drilling
  - ❑ Conventional geological, geochemical and geophysical exploration techniques



# Tier 1 Jurisdiction

Investment Attractiveness Index

Best Practices Mineral Potential Index



- Annual survey conducted by Fraser Institute ranks Yukon, Canada as a top jurisdiction in the Investment Attractiveness Index and the Best Practices Mineral Potential Index
- Yukon has been consistently ranked a top jurisdiction in the last 5 years in both the Investment Attractiveness and Mineral Potential categories
- Supportive government and First Nation groups, favourable mining exploration policies, strong infrastructure initiatives, and historically underexplored contribute to Yukon’s place as a tier 1 jurisdiction in the world

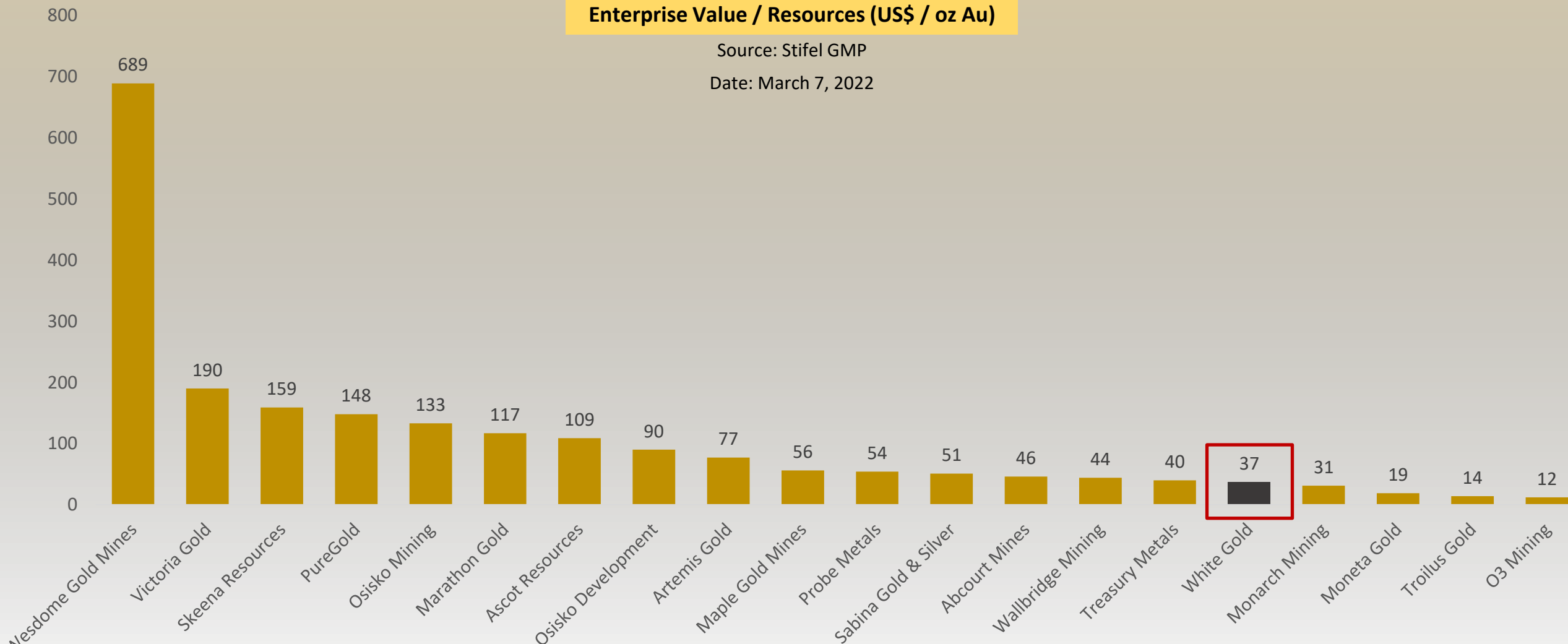
Source: Fraser Institute Annual Survey of Mining Companies 2021

# COMPARABLE ANALYSIS



## Enterprise Value / Resources (US\$ / oz Au)

Source: Stifel GMP  
Date: March 7, 2022



# SEASONALITY

