



CANADA
SILVER
COBALT

HIGHEST SILVER
GRADES IN THE WORLD

Critical Battery Metals
Nickel, Copper, Cobalt

CORPORATE PRESENTATION
April 2022



DISCLAIMER

Neither the TSX Venture Exchange nor its Regulation Service Provider (as that term is defined in the policies of the TSX Venture Exchange) accepts responsibility for the adequacy or accuracy of this material. This presentation may contain forward-looking statements including but not limited to comments regarding the timing and content of upcoming work programs, geological interpretations, receipt of property titles, potential mineral recovery processes, etc. Forward-looking statements address future events and conditions and therefore, involve inherent risks and uncertainties. Actual results may differ materially from those currently anticipated in such statements. The Company does not undertake to update any forward-looking information in this presentation or other communications unless required by law.

QUALIFIED PERSON

The technical information in this corporate presentation was prepared under the supervision of Canada Silver Cobalt Works Inc.'s President and Chief Operating Officer Matt Halliday, P. Geo., who is a Qualified Person in accordance with National Instrument 43-101.

SILVER DEPOSIT WITH COBALT BY-PRODUCT

- Exceptional deposit in Northern Ontario, highest silver grade in the world
- Advanced stage, 60,000 m of drilling completed, upcoming resource update
- Ramp planning and baseline studies for permitting underway
- TTL “Mini-Mill” nearby and ready for processing into silver dore bars

BATTERY METALS PROPERTIES

- New discovery in Northern Québec
- Drilled into massive sulphides formation, with high-grade nickel and copper
- **Re-2Ox** – hydrometallurgical process that exceeds environmental standards
- Now part of **Coniagas Battery Metals Inc.** subsidiary in preparation for potential monetization



Ag

Silver for solar panels/electronics



Ni

Co

Nickel and Cobalt for EV batteries



Cu

Copper for EV wiring



KEY TECHNICAL Team Members



MATT HALLIDAY P.GEO | President, COO, VP-Exploration

15+ years of exploration/development worldwide including narrow-vein deposits (SGS, Kirkland Lake Gold, First Cobalt)

FRANK BASA P.ENG | CEO and Chief Metallurgist

35+ years of exploration/milling/metallurgy worldwide including Agnico Eagle in Cobalt Camp

DOUG ROBINSON P.ENG | Geological Consultant

Highly regarded geologist (Cobalt Camp, Kirkland Lake area)

JACQUES MONETTE | Director (Mine Consultant)

Senior underground mine manager with worldwide experience

DIANNE TOOKENAY | Director (First Nations Consultant)

Leads critical consultations with First Nations

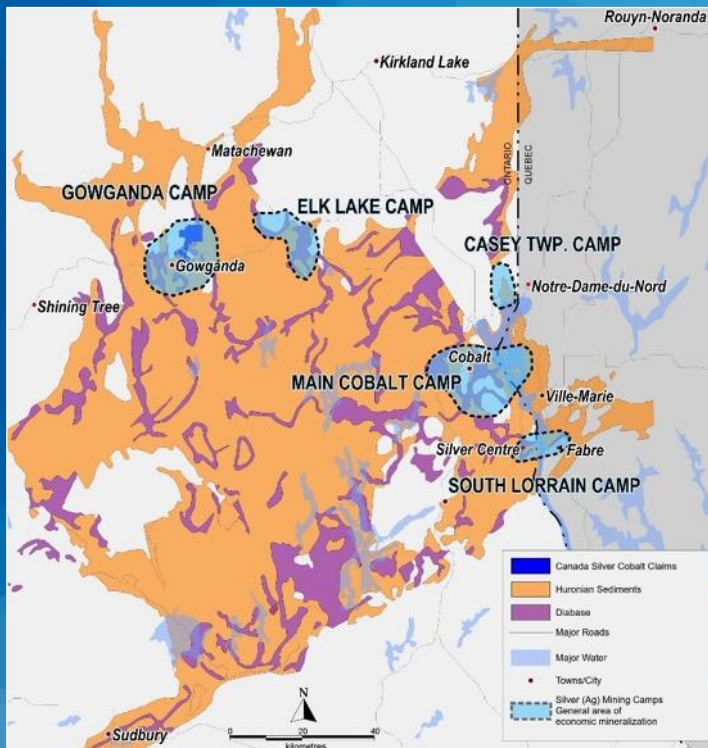
CLAUDE DUPLESSIS P.ENG | GoldMinds GeoServices

Leads Québec battery metals exploration



Matt Halliday, President, COO and VP Exploration (left)
and Frank Basa, Chairman and CEO (Right)

CANADA'S SILVER-COBALT HEARTLAND

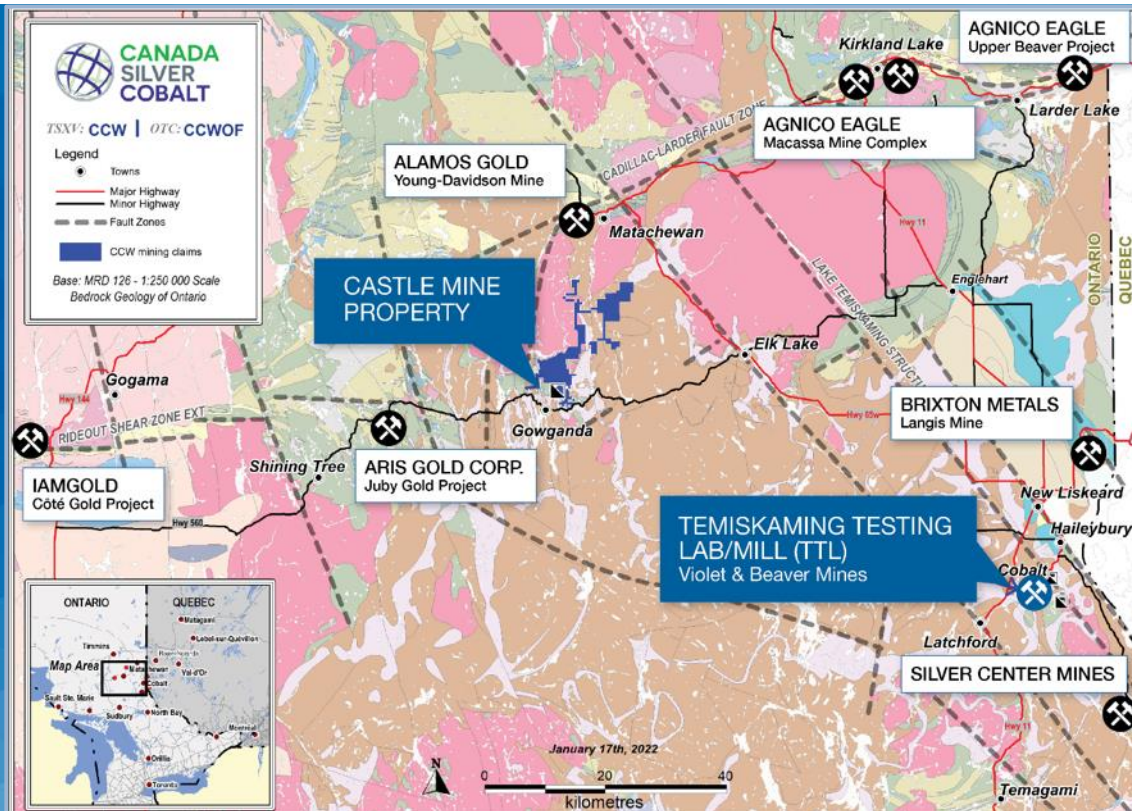


Birthplace of Canadian
HARD ROCK MINING

Global Top-Tier Grades
SILVER AND COBALT

Historical Production
>500 MILLION OZ SILVER
>30 MILLION LBS COBALT

SILVER PROPERTIES Regional Geological Power!

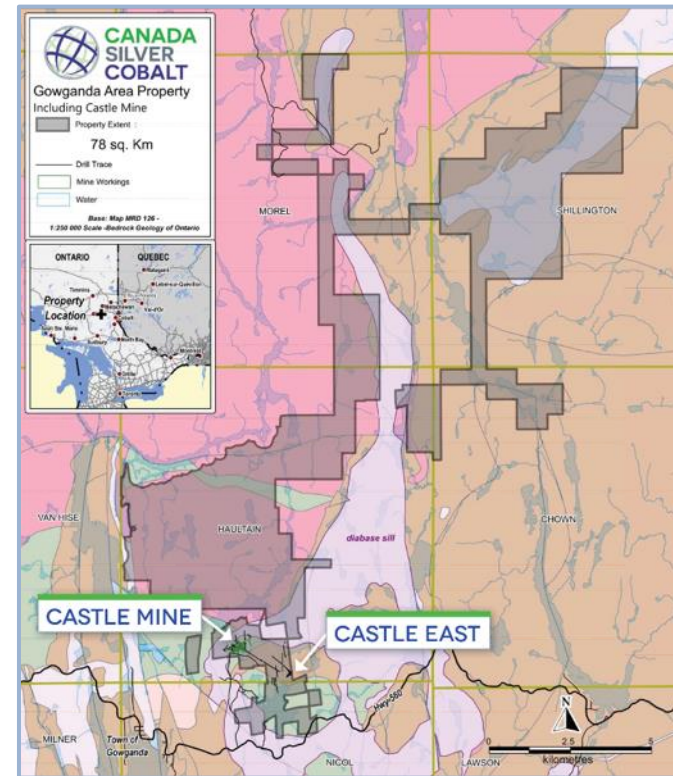


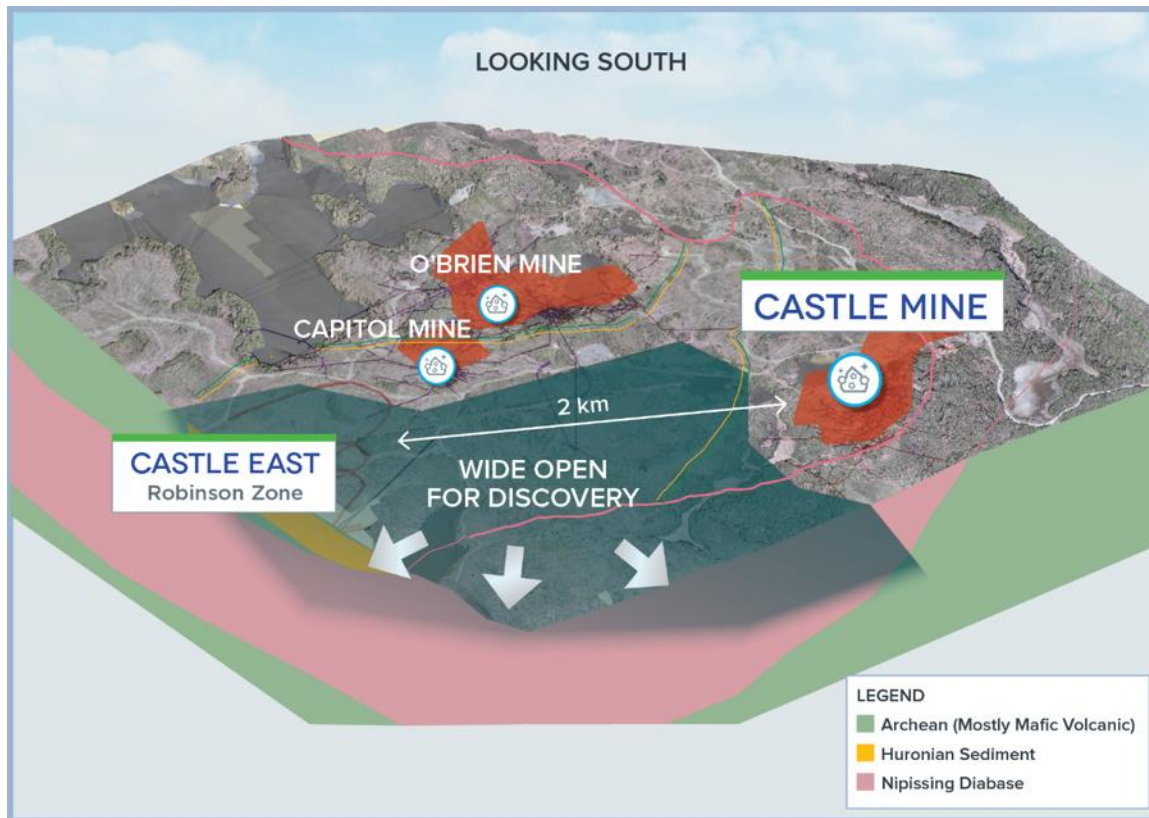
CASTLE SILVER Mine and Property



Castle Mine produced 9.5 million oz silver with 300,000 lbs cobalt as by-product in the 1900s and is the only permitted underground asset in the Northern Ontario Silver-Cobalt Camp

<p>78 KM² Total Claim Zone</p>	<p>PREVIOUSLY-PRODUCING MINE Located NE of Town of Gowganda in the middle of Gowganda silver-cobalt camp</p>
<p>EXCELLENT INFRASTRUCTURE</p>	<p>Includes all 3 former EXISTING MINE SHAFTS Castle Mine Shafts #1, #2 and #3 and the adit (near #2 and #3)</p>
<p>FIRST NATIONS agreements in place</p>	<p>Strong EXPLORATION POTENTIAL extends 17 km northeast</p>





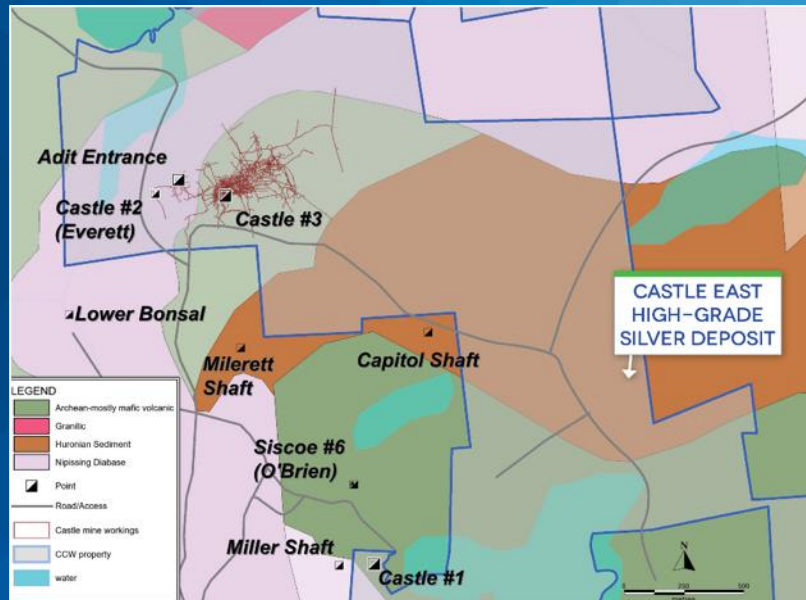
CASTLE EAST HIGH-GRADE SILVER DISCOVERY GOWGANDA CAMP, MILLER LAKE BASIN

- Just a **small fraction of Castle East** has been drilled to date
- One of the **most significant new grassroots high-grade Silver discoveries** in Northern Ontario in several decades!
- **Top tier silver grades**
- Potential scale
 - this area, east of 3 past producers received **little historical attention**
- **Maiden resource** (May 2020)

ROBINSON SILVER DISCOVERY 250 Ag oz/tonne over 7.5 m oz Inferred Resource

CASTLE EAST SILVER DEPOSIT

Grade and scale potential total volume of the diabase at Castle East estimated 970 million – 1.45 billion cubic metres



INTERSECTION HIGHLIGHTS



CS-19-08-W01 (50,583 gpt Ag over 0.6 m) Massive native silver in CS-19-08-W01 @ ~427 m vertical depth



CS-19-08-W02 (70,380 gpt Ag over 0.3 m) Massive native silver in hairline silver-filled fractures in CS-19-08-W02 @ ~418 m vertical depth

FIRST EVER 43-101 Silver Resource in Cobalt Camp



ZONE 1A AND 1B

- Average silver grade 8,582 g/t (250.2 oz/tonne) in a combined 27,000 tonnes of material
- Total 7,560,200 inferred oz of silver

MINERAL RESOURCE ESTIMATE AT CASTLE EAST AS OF MAY 2020¹

Inferred Mineral Resources	Tonnes	Grade								
		Ag g/t	Co g/t	Cu g/t	Ni g/t	Pb g/t	Zn g/t	AgEq g/t	Ag oz	AgEq oz
ZONE 1A	8,100	7,960	946	349	790	16	12	8,042	2,073,000	2,094,200
ZONE 1B	19,300	8,843	2,308	325	336	30	52	8,998	5,487,200	5,583,200
ZONE 2A	5,500	38	5,673	2,101	453	118	108	426	6,800	75,300
TOTAL INFERRED MINERAL RESOURCES	32,900	7,149	2,537	628	467	41	52	7,325	7,567,000	7,752,700

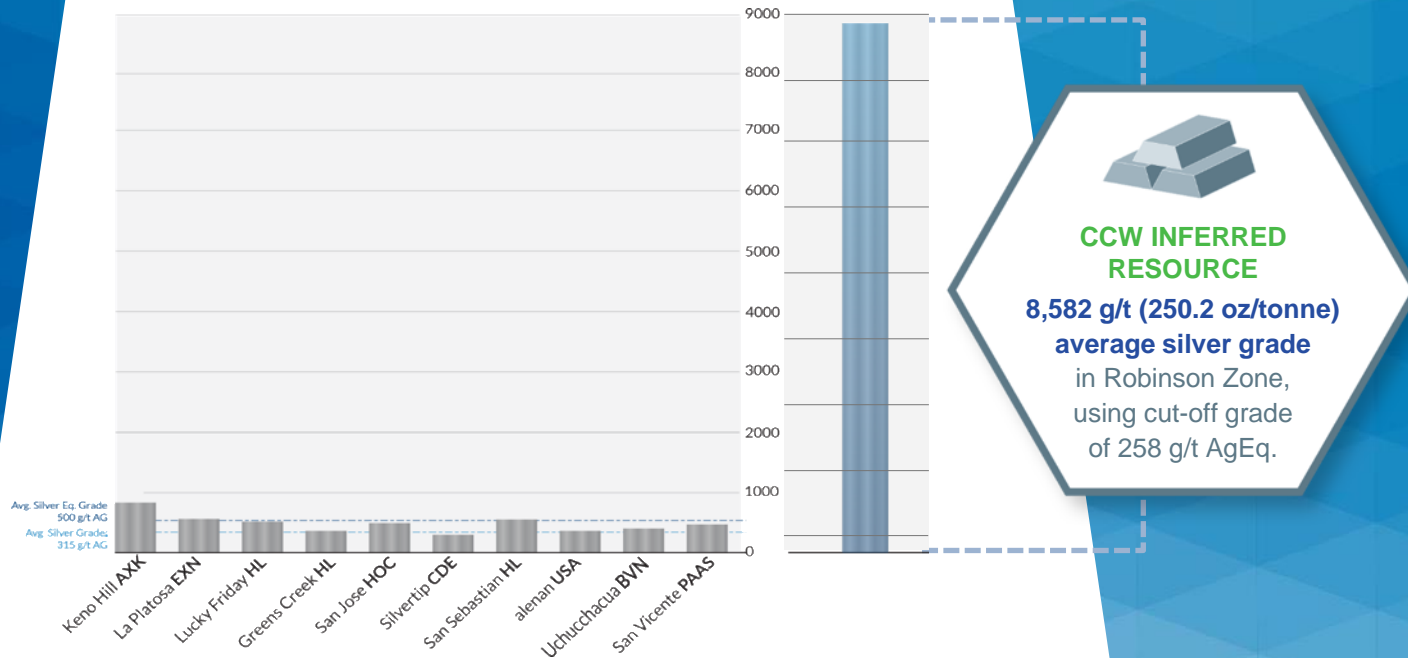
(1) Independently prepared by GoldMinds Geoservices Inc. in accordance with National Instrument 43-101 using a cut-off grade of 258 AgEq g/t. See company news release May 28, 2020.

Note: Update planned in Q1 2022 based on 50,000+ metres drilled and new high-grade veins discovered since May 2020.

10 PEER COMPANY SILVER RESERVES Compared to Robinson Zone

AVERAGE SILVER EQUIVALENT AND AVERAGE SILVER GRADE RESERVES

High-Grade Reserves for Silver and Total Silver Equivalent



NEW SILVER DISCOVERIES Including “Big Silver” Vein 2 within 60 metres of Robinson Zone Discovery Hole Ca-11-08

- **High-grade silver mineralization** over 5-7 cm true width
- Silver Grade: **89,853 g/t Ag (2,621 oz/tonne)** over a core length of 0.30 m
- Gold Equivalent Grade¹: **38.98 oz/tonne AuEq**
- Comparable to the average thickness of veins that **produced over 70 million ounces of silver** from the 3 major **past-producers within 2 km of the Robinson Zone**



CS-20-39 (89,853 g/t Silver Grade)

(1) AuEq calculated based on US\$27.625/oz Ag and US\$1,857.80/oz Au

“BIG SILVER” VEIN 2 IS BEING EXPANDED Using Wedge Drilling with 3 Intercepts above 50,000 g/t Ag or Greater than 20 oz/tonne Gold Equivalent



Wedges **CS-20-39W2 @ 51,612 g/t Ag** over **0.41 m** and **CS-20-39W4 @ 53,739 g/t Ag** over **0.48 m**¹



High-grade silver mineralization over 4-6 cm true width in hole CS-20-39W2 of 51,612 g/t (1,506 oz/tonne) Ag over a core length of 0.41 m at 561.7 m depth – included in a wider interval of 30,931 g/t (902 oz/tonne) over 0.71 m.



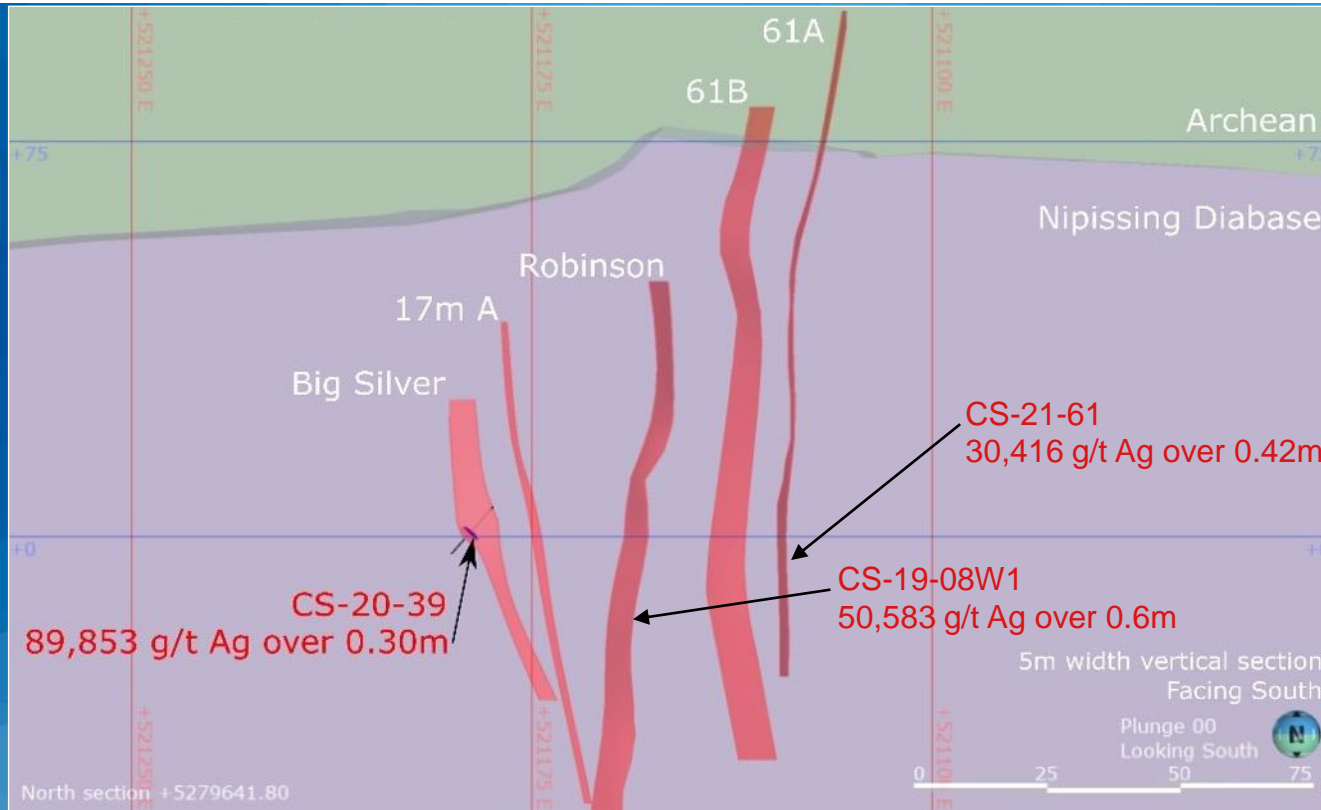
Bonanza-grade silver mineralization at 53,739 g/t Ag (1,568 oz/tonne Ag or 23.31 oz/tonne AuEq) and 2.22% cobalt over 0.48 m in hole CS-20-39W4 at 551.1 m depth – included in a larger interval of 19,308 g/t Ag (563.24 oz/tonne Ag and 8.38 oz/tonne AuEq) over 1.3 m.

(1) See CCW News Releases April 26 and June 16, 2021.

AuEq calculated based on US\$27.625/oz Ag and US\$1857.80/oz.

CASTLE EAST Cross Section of High-grade Silver Veins

FACING
SOUTH



NEXT STEPS at Castle

Castle East Drilling,
**60,000m DRILL PROGRAM
COMPLETED** March 2022

UPDATE RESOURCE ESTIMATE

to include several new high-grade veins

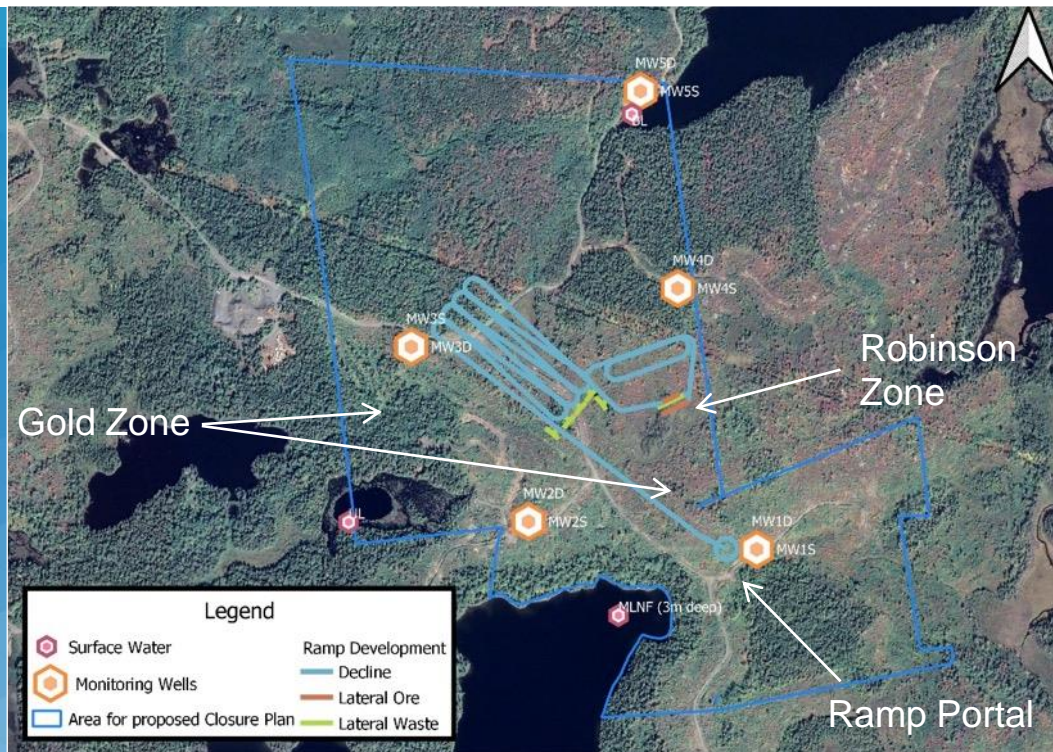
CASTLE EAST RAMP DESIGN, PEA AND PERMITTING

**DEVELOP NEW TARGETS
AT CASTLE MINE** in preparation for
fresh underground drilling

ADVANCE TAILINGS project



CASTLE EAST OVERVIEW Environmental Studies, Ramp Location, Timeline¹



(1) Timeline is estimated by the company and may be subject to delays.

NEARBY TTL “MINI-MILL” Ready for Processing into Silver Dore Bars



TEMISKAMING TESTING LAB / METALS PROCESSING FACILITY¹

Well-established facility in town of Cobalt **SPECIALIZES IN HIGH-GRADE MINERALIZATION**

Onsite Labs **RETAINED AS INDEPENDENT CONTRACT OPERATOR** of TTL assay lab

Possible synergies with CCW's **PROPRIETARY GREEN RE-20X PROCESS**

High capacity bullion furnace **PRODUCES SILVER AND GOLD DORE BARS**

Bulk sampling, **E-WASTE PROCESSING POTENTIAL**



PROOF OF CONCEPT TEST
3 SILVER BARS
POURED Q4 2019
from Castle Mine Waste Material

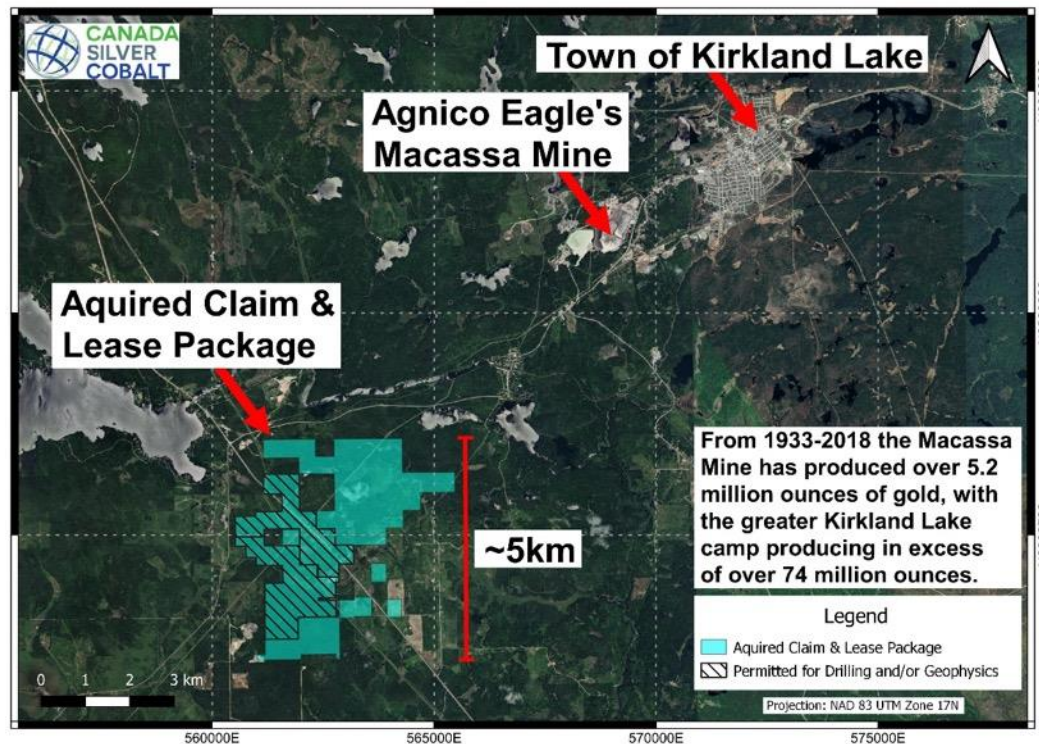


(1) See company news releases Oct. 10 and 24 and Dec. 4, 2019, Jan. 10 and July 31, 2020 and Jan. 15, 2021

EBY-OTTO Highly Prospective Gold Property

- Acquisition of 1,000 hectares of gold exploration properties places CCW in the middle of **the most prolific high-grade gold-bearing areas in Northern Ontario that have produced 24 million oz gold in the past 100 years**
- 2 km strike length has **numerous strongly altered and mineralized quartz veins** outcropping at the surface
- **Mineralization and alteration highly favourable** in addition to being typical of other gold-bearing veins in the district
- **Geophysical survey completed**, drill targets identified, assays pending on channel sampling

5 KM FROM AGNICO EAGLE'S HIGH-GRADE MACASSA MINE¹



(1) For details, see CCW news releases August 3 and 30, 2021.

BATTERY METALS for Electric Vehicles and a Cleaner World



- **Nickel, copper and cobalt exploration properties** in Northern Ontario and Québec (1 in Ontario and 14 in Québec)

- Exploration underway at **Graal massive sulphide formation**

- Green **Re-2Ox** processing technology for **cobalt, nickel sulphides needed in EV batteries**

- **Testing and design work for Pilot Plant underway** at SGS Lakefield

- **Coniagas Battery Metals Inc. formed as CCW subsidiary** to hold exploration properties and **Re-2Ox** in preparation for spin-out



BATTERY METALS EXPLORATION

Underway at Graal Property in Québec



- **7,771 meters drilled at nickel-copper-cobalt target** in the Lac St. Jean region
- **Aiming to test the Bouguer (geophysical) anomalies** within the Graal-Nourricier-Lac Suzanne property
- Airborne **gravity survey of five properties** conducted in early 2021 **confirmed the highest potential target area is on the Graal property**
- Graal is one of **14 properties on 573 claims covering 31,201 hectares held by CCW** in northern Québec prospective in Electric Vehicle (EV) metals including nickel, copper, and cobalt



MASSIVE SULPHIDES DISCOVERED AT THE GRAAL PROPERTY



Massive sulphides in the drill core at Graal



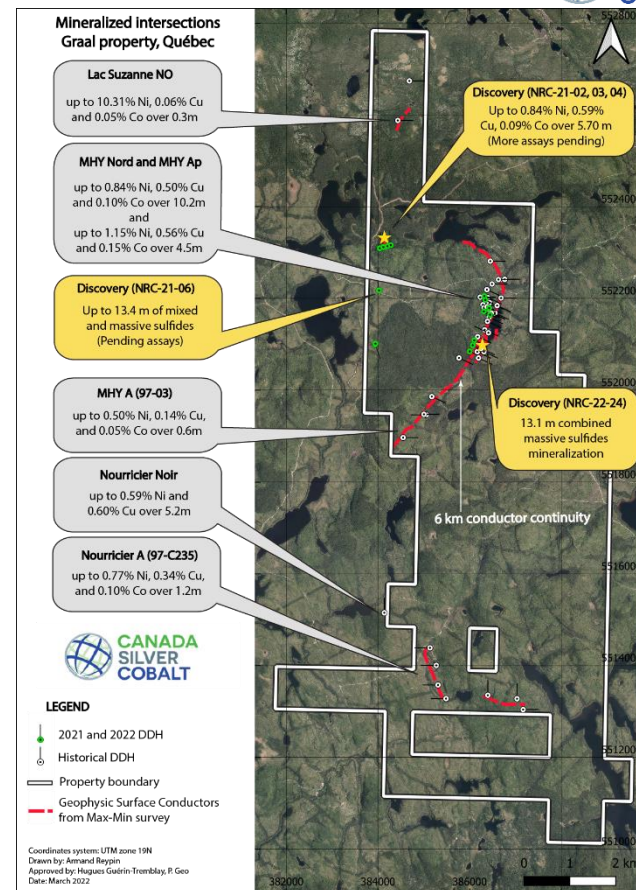
Claude Duplessis, Eng., GoldMinds GeoServices, at a drill rig at Graal

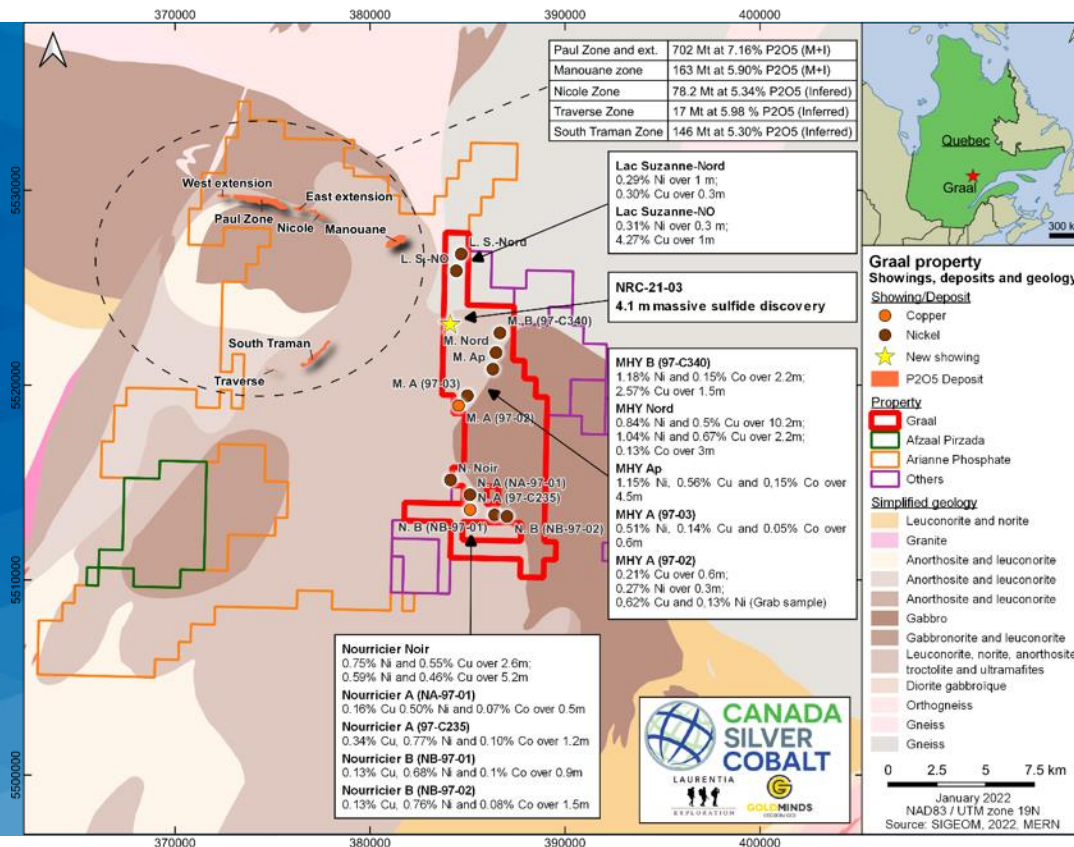


GRAAL PROPERTY Potential World-class Deposit

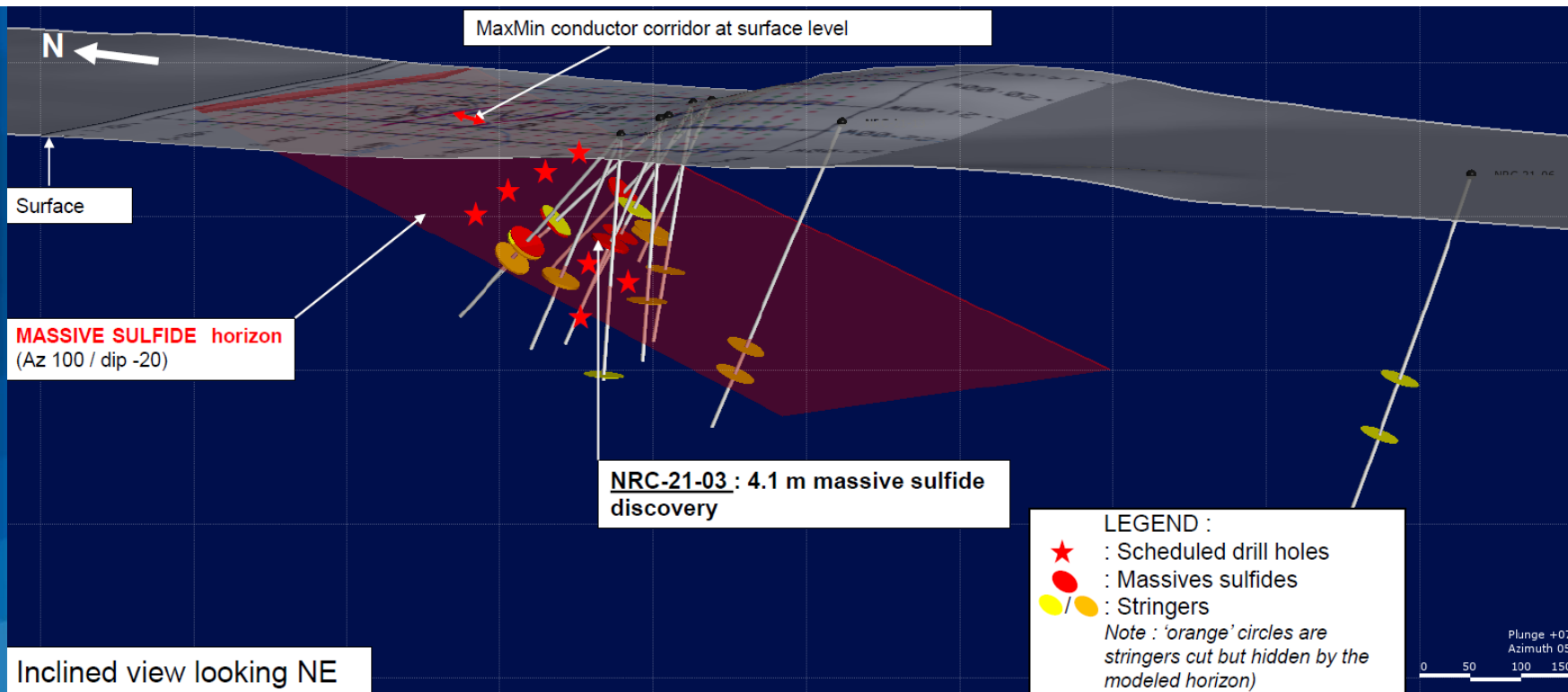
- Evidence points to a **large deposit on the 6,113 hectares** and the **potential for a world-class battery metals camp**
- **6 km strike length mineralized with near-surface copper, nickel, and cobalt** (see map)
- Recent drilling intersected **massive sulphides** in 20 of 21 holes. First 3 holes intersected up to **2.08% nickel and 3.75% copper, plus cobalt, platinum and palladium**. Lab results pending.
- Historical drilling had **previously indicated a potential target of near-surface tonnage of 30 to 60 million tonnes¹** with a grade range of 0.60-0.80% nickel, 0.30-0.50% copper and 0.10-0.15% cobalt in the MHY section
- The **tonnage excludes newly discovered mineralization and does not take into account any potential at depth**

(1) Conceptual in nature. There has been insufficient exploration to define resource.
For details, see news releases November 24 and 29, 2021 and Jan. 10, Mar. 3, and April 4, 2022.





EARLY 2022 CROSS SECTION of Graal Massive Sulphide Discovery



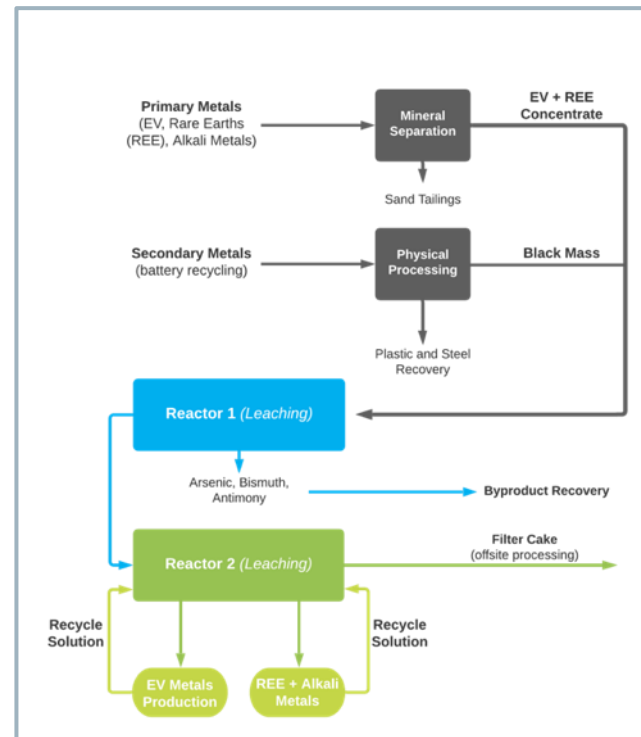
PROPRIETARY RE-20X TECHNOLOGY

Clean, Environmentally Compliant



- **Re-20x** is a closed-loop hydrometallurgical process that extracts metals without any discharge or smelting
- Conforms with EV manufacturer's need for ethically sourced battery metals and strict environmental compliance
- Demonstrated in SGS lab tests to be effective in recovering 99% of cobalt from Castle gravity concentrates, removing 99% of arsenic, and producing an industry grade 22.6% cobalt sulphate for electric vehicle batteries
- SGS Canada has been engaged to design and build a **Re-20x Pilot Plant at Lakefield, Ontario**
- Feed material for test work will come from the Castle underground mine, Robinson Zone, Castle and Beaver tailings, recycled batteries, newly acquired nickel properties and Granada Gold Mine's rare earth deposit

Re-20x PROCESS FLOWSHEET



Canada Silver Cobalt Works Inc.

TSX-V **CCW** | OTCQB **CCWOF** | FRANKFURT **4T9B**

Shares Outstanding ¹	177,487,816
Market Cap (@\$0.26/share) ²	\$46.1 million
Warrants ¹ (\$0.24 - \$0.80)	65,758,378
Options ¹ (\$0.10 - \$0.70)	10,553,000
Fully Diluted ¹	253,799,194



(1) Share numbers approximate, as of Dec. 31, 2021

(2) Share price as of March 25, 2022.

CASTLE EAST

- **Major update** of resource estimate
- **Evaluate** 60,000 m drill program
- **Complete** environmental baseline studies
- **Prepare** permit application for a ramp
- **Preparatory work** for PEA
- **Machine learning data-driven drill targeting** for next stage (GoldSpot Discoveries)

CASTLE MINE

- **Sample stamp mill tailings** for testing at TTL

EBY-OTTO GOLD PROPERTY

- **Field work, channel sampling, drill program**

BATTERY METALS

- **Evaluate Graal** 7,771 m drill program
- **Results pending for 18 of 21 drill holes** with first three holes intersecting up to **2.08% nickel and 3.75% copper**
- Borehole EM geophysics and EM ground surveys + **additional 1,700 m drill program**
- Further testing of **Re-2Ox** at SGS Lakefield and design of commercial pilot plant
- Potential **spin-out of Coniagas Battery Metals** subsidiary – Re-2Ox + 15 properties on 35,669 hectares

TWO POTENTIAL SILVER-COBALT MINES WITH PERMITTED MILLING FACILITY

- **Castle East** – Highest silver grades in the world with ramp planned to extract the rich veins and also drill underground to expand the deposit
- **Castle Mine:** – Former silver-cobalt mine with underground access and potential to resume mining
- **TTL Mini-Mill:** – Fully permitted to process high-grade material into silver dore bars

BATTERY METALS WITH PROCESSING TECHNOLOGY

- **Graal** – Massive sulphides discovery in Northern Quebec with nickel, copper, cobalt, platinum and palladium
- **Re-2Ox** – ESG-compliant hydrometallurgical process to produce cobalt and nickel sulphate for EV battery producers and extract other critical metals
- **Coniagas Battery Metals Inc.** – Subsidiary to hold battery metals properties in preparation for potential monetization



Ag

Silver for solar panels/electronics



Ni

Co

Nickel and Cobalt for EV batteries



Cu

Copper for EV wiring



CANADA
SILVER
COBALT

HIGHEST SILVER GRADES IN THE WORLD

Critical Battery Metals Green Re-20x Processing Technology

MATT HALLIDAY P.Geo
President and COO

matt@canadasilvercobaltworks.com
+1 514-708-7390

www.canadasilvercobaltworks.com

Mining Office

2875 Ave. Granada
Rouyn-Noranda,
QC J9Y 1J1

T +1 819-797-4144
F +1 819-762-2306





CANADA
SILVER
COBALT

APPENDIX



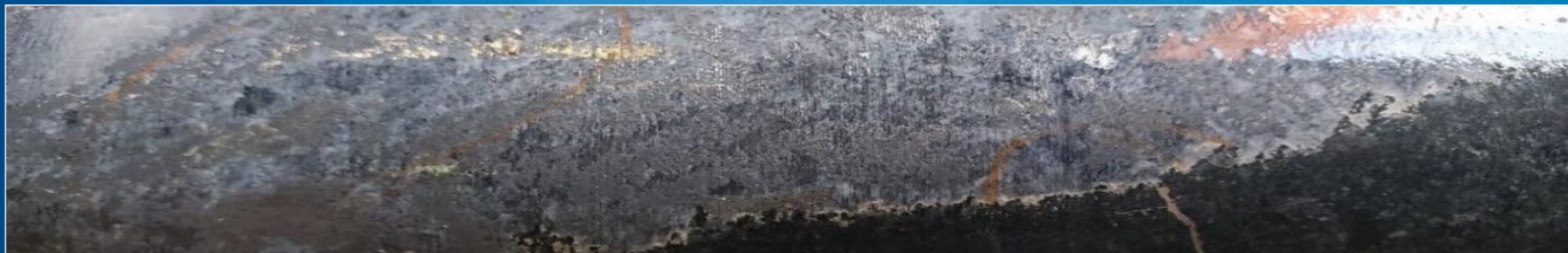
CASTLE EAST DISCOVERY AREA EXPANDS

Drilling adds two High-Grade Silver Vein Structures Separate from Robinson and Big Silver



BOTH HIGH-GRADE SILVER VEINS ARE LOCATED SOUTH OF ROBINSON ZONE AND WEST OF BIG SILVER

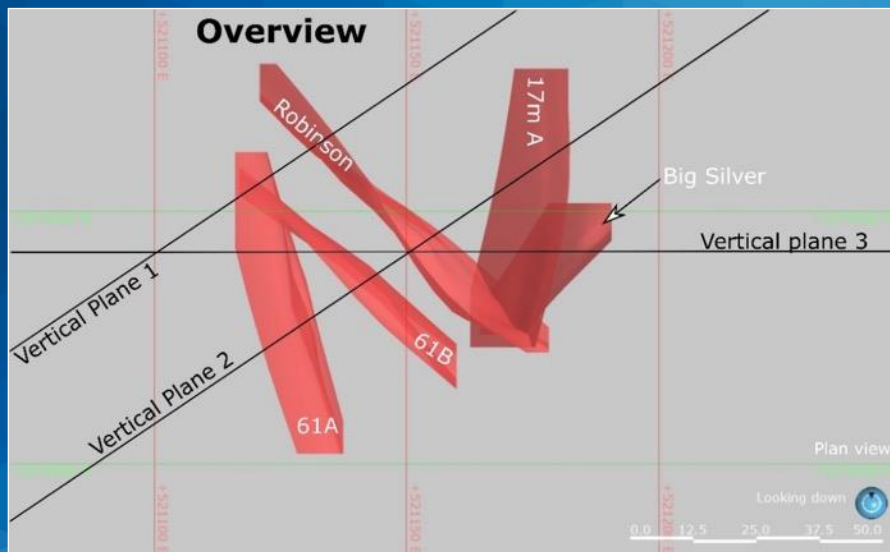
- CS-21-61 intersected **30,416 g/t Ag over 0.45 m at downhole depth of 449.95 m** located 35 m south from Robinson Zone discovery hole CA-11-08 and 60 m west of Big Silver discovery hole CS-20-39
- CS-21-65, located 70 m south of the Robinson Zone, intersected 7,328.47 g/t Ag over 0.38 m at 254.03 m, which **is the closest high-grade intercept to the surface and is located within Archean lithologies.** This hole also intersected 1,883.21 g/t Ag at 421.00 m



Close-up of mineralization in hole **CS-21-61** (30,416.91 g/tonne Ag or 887.31 oz/tonne). Shows **intense Cobalt mineralization occurring** as the dark grey minerals within the vein. The bright silver is located within the cobalt clusters as well as lining the edge of the vein and radiating outwards.

CROSS SECTION VIEWS OF HIGH-GRADE SILVER VEINS DISCOVERED AT CASTLE EAST

Facing Down



Facing Southeast



CROSS SECTION VIEWS OF HIGH-GRADE SILVER VEINS DISCOVERED AT CASTLE EAST

Facing Southeast



Facing South



MID-GRADE VEIN DISCOVERY West of Robinson Zone

Indicates New Corridor



SIGNIFICANT POTENTIAL SILVER MINERALIZED STRIKE DISTANCE OF 710 METRES

- **Vein 7 Intercept is located 650 metres west of the Robinson Zone** Discovery hole¹
- **CS-21-50 intersected 2,208 g/t Ag over 0.45 metres** at downhole depth of 548.43 metres in a distinct area, Robinson West, 650 metres from Robinson Zone Discovery hole CA-11-08
- New corridor with **significant potential silver mineralized strike distance of 710 metres**, striking towards the Robinson Zone
- **Drill program increased to 60,000 metres from 50,000 metres** to explore the extension



Silver and cobalt mineralization in hole **CS-21-50** (2,208 g/t Ag, 0.38% cobalt) ~548.43 m depth

(1) For details, see CCW news release May 25, 2021

PHASE 1 Drilling has also Intersected a High-Grade Gold Structure

HIGH-GRADE VISIBLE GOLD AT 25 g/t AU INTERSECTED AT THE ROBINSON ZONE¹

- **Gold-cobalt mineralization found** in hole CS-20-31 is **one of five mineralized veins in the area** contributing to the **potential expansion of the Robinson system**
- CS-20-31 **intersected 24.95 g/t Au over 0.30 m from 49.7 m - 50.0 m with visible gold in calcite veining** within Archean volcanic tuff
- **This gold structure, near the surface above the silver-cobalt veins** of the diabase, and **identifying further gold mineralization near surface**, will dramatically impact the economics of the Robinson Zone vein system
- **CS-20-31 also intersected 3.82 g/t Au over 2.86 m from 451.0 m - 453.86 m, including 6.11 g/t Au over 1.66 m**



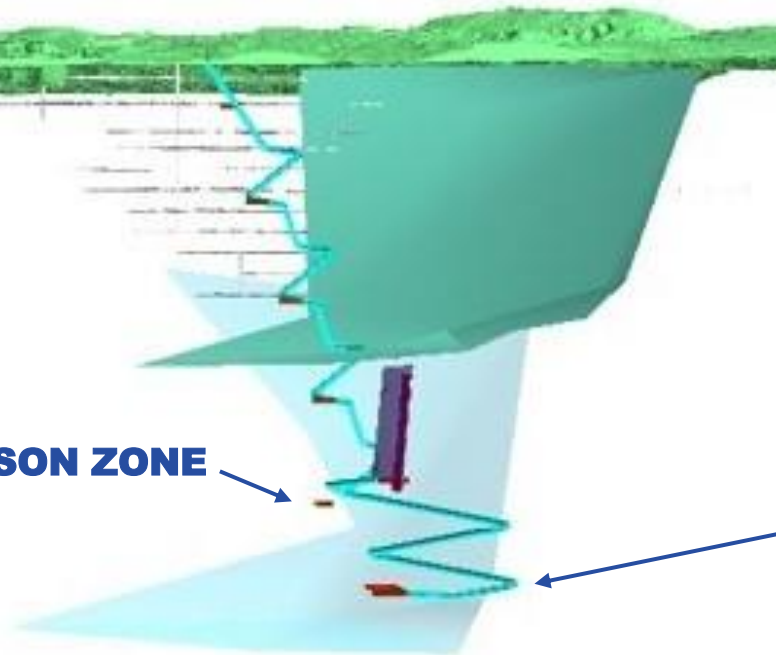
Visible Archean Gold – Shallow in **CS-20-31** ~47.96 m depth

(1) For details, see CCW news release Dec. 17, 2020.

CASTLE EAST Preliminary Design of Future Ramp

- **Robinson Zone Wedge 1** 50,583 gpt Ag over 0.6 m (568 gpt AuEq)
- **Robinson Zone Wedge 2** 70,380 gpt Ag over 0.3 m (791 gpt AuEq)

ROBINSON ZONE



CS-20-22 (~525 m vertical depth) Second Panel of Silver and Cobalt

PRECIOUS METALS

- **Castle East Silver Deposit**
 - Resource Update
 - Ramp planning
 - Permitting
 - PEA
 - Develop new targets (with Goldspot)
- **Castle Silver Mine**
 - Sample stamp mill tailings
 - Testing at TTL using gravity pilot plant
- **Eby-Otto Gold Property**
 - Plan exploration program
 - Start drilling
- **TTL**
 - Install gravity pilot plant
 - Test stamp mill tailings from Castle and Beaver

BATTERY METALS

- **Graal**
 - Evaluate drill results
 - Borehole EM geophysics survey
 - Ground EM survey
 - Continue with drilling
- **Re-2Ox**
 - Further testing at Lakefield
 - Design of commercial pilot plant



(1) For details, see CCW news release Jan. 31, 2022