



TSX: WM
OTCQX: WLBMF



Growing Gold Resources in Quebec's Abitibi

December 2023

wallbridgeminig.com

Cautionary Note Regarding Forward-Looking Information

The information in this document contains forward-looking statements or information (collectively, "FLI") within the meaning of applicable Canadian securities legislation. FLI is based on expectations, estimates, projections and interpretations as at the date of this document.

All statements, other than statements of historical fact, included herein are FLI that involve various risks, assumptions, estimates and uncertainties. Generally, FLI can be identified by the use of statements that include words such as "seeks", "believes", "anticipates", "plans", "continues", "budget", "scheduled", "estimates", "expects", "forecasts", "intends", "projects", "predicts", "proposes", "potential", "targets" and variations of such words and phrases, or by statements that certain actions, events or results "may", "will", "could", "would", "should" or "might", "be taken", "occur" or "be achieved."

FLI in this document includes but is not limited to: statements regarding the results of the Fenelon preliminary economic assessment; the potential future performance of Archer common shares; future drill results; the Company's ability to convert inferred resources into measured and indicated resources; environmental matters; stakeholder engagement and relationships; parameters and methods used to estimate the MRE's at the Fenelon Gold (defined below) and Martiniere (defined below) properties (collectively the "Deposits"); the prospects, if any, of the Deposits; future drilling at the Deposits; and the significance of historic exploration activities and results.

FLI is designed to help you understand management's current views of its near- and longer-term prospects, and it may not be appropriate for other purposes. FLI by their nature are based on assumptions and involve known and unknown risks, uncertainties and other factors which may cause the actual results, performance, or achievements of the Company to be materially different from any future results, performance or achievements expressed or implied by such FLI. Although the FLI contained in this document is based upon what management believes, or believed at the time, to be reasonable assumptions, the Company cannot assure shareholders and prospective purchasers of securities of the Company that actual results will be consistent with such FLI, as there may be other factors that cause results not to be as anticipated, estimated or intended, and neither the Company nor any other person assumes responsibility for the accuracy and completeness of any such FLI. Except as required by law, the Company does not undertake, and assumes no obligation, to update or revise any such FLI contained in this document to reflect new events or circumstances. Unless otherwise noted, this document has been prepared based on information available as of the date of this document. Accordingly, you should not place undue reliance on the FLI, or information contained herein.

Furthermore, should one or more of the risks, uncertainties or other factors materialize, or should underlying assumptions prove incorrect, actual results may vary materially from those described in FLI.

Assumptions upon which FLI is based, without limitation, include: the results of exploration activities, the Company's financial position and general economic conditions; the ability of exploration activities to accurately predict mineralization; the accuracy of geological modelling; the ability of the Company to complete further exploration activities; the legitimacy of title and property interests in the Deposits; the accuracy of key assumptions, parameters or methods used to estimate the MREs and in the PEA; the ability of the Company to obtain required approvals; geological, mining and exploration technical problems; failure of equipment or processes to operate as anticipated; the evolution of the global economic climate; metal prices; foreign exchange rates; environmental expectations; community and non-governmental actions; and any impacts of the COVID-19 pandemic on the Deposits; and , the Company's ability to secure required funding. Risks and uncertainties about Wallbridge's business are discussed in the disclosure materials filed with the securities regulatory authorities in Canada, which are available at www.sedarplus.ca.

COVID-19 – Given the rapidly evolving nature of COVID-19, Wallbridge is actively monitoring the situation in order to maintain as best as possible the activities of the Company while striving to protect the health of its personnel. Wallbridge's activities will continue to align with the guidance provided by local, provincial and federal authorities in Canada. The Company has established measures to continue normal activities while protecting the health of its employees and stakeholders. Depending on the evolution of COVID 19, mitigation measures may affect the regular operations of Wallbridge.

Cautionary Note to United States Investors

Wallbridge prepares its disclosure in accordance with NI 43-101 which differs from the requirements of the U.S. Securities and Exchange Commission (the "SEC"). Terms relating to mineral properties, mineralization and estimates of mineral reserves and mineral resources and economic studies used herein are defined in accordance with NI 43-101 under the guidelines set out in CIM Definition Standards on Mineral Resources and Mineral Reserves, adopted by the Canadian Institute of Mining, Metallurgy and Petroleum Council on May 19, 2014, as amended. NI 43-101 differs significantly from the disclosure requirements of the SEC generally applicable to US companies. As such, the information presented herein concerning mineral properties, mineralization and estimates of mineral reserves and mineral resources may not be comparable to similar information made public by U.S. companies subject to the reporting and disclosure requirements under the U.S. federal securities laws and the rules and regulations thereunder.

Cautionary Notes and Definitions Regarding PEA

On June 26, 2023, the Company announced positive results from the PEA completed on Fenelon. The 2023 MRE formed the foundation for the PEA which assessed the potential for a predominantly underground bulk mining operation at Fenelon. The Company cautions that the results of the PEA are forward-looking and preliminary in nature and include inferred mineral resources that are considered too speculative geologically to have economic considerations applied to them to be classified as mineral reserves. There is no certainty that the results of the PEA will be realized. The PEA financial economic analysis is significantly influenced by gold prices. The following summary includes certain non-IFRS financial measures, such as free cash flow, initial capital expenditures, sustaining capital expenditures, total cash costs and all in sustaining costs, which are not measures recognized under IFRS and do not have a standardized meaning prescribed by IFRS. The disclosure of such non-IFRS financial measures is required under National Instrument 43-101 - Standards of Disclosure for Mineral Projects ("NI 43-101") and has been prepared in accordance with NI 43-101. Although reconciliations to equivalent historical measures are not available. Please refer to the cautionary language and non-IFRS financial measures for detailed definitions and descriptions of such measures.

QP- Statement

The scientific and technical information of the Company and of the Fenelon, Martinière and Grasset properties included in this presentation have been reviewed and approved by Francois Chabot, Eng., Technical Studies Manager of Wallbridge and a Qualified Person as defined by NI 43-101.

Non-IFRS Measures

Wallbridge has included certain non-IFRS financial measures in this MD&A, such as free cash flow, initial capital expenditures, sustaining capital expenditures, total cash costs and all in sustaining costs, which are not measures recognized under IFRS and do not have a standardized meaning prescribed by IFRS. As a result, these measures may not be comparable to similar measures reported by other companies. Each of these measures used are intended to provide additional information to the user and should not be considered in isolation or as a substitute for measures prepared in accordance with IFRS. Non-IFRS financial measures used herein and common to the gold mining industry are defined below.

Free cash flow was estimated as the amount of cash generated by Fenelon after all operating and capital expenditures have been paid.

Initial and sustaining capital expenditures in the PEA were estimated based on current costs received from vendors as well as developed from first principles, while some were estimated based on factored references and experience from similar operating projects. Initial capital expenditures represent the construction and development costs to achieve commercial production and sustaining capital expenditures represent the construction and development costs subsequent to commercial production. A description of the significant cost components for initial and sustaining capital costs included in the PEA are summarized below:

Cost Element	Initial Capital (\$M) ^{1,2}
Mill	220
Paste Plant	46
Tailings and Water Treatment	36
Capitalized Operating (Pre-production)	99
Surface Civil & Infrastructure	87
Mining Equipment	18
Underground Development	83
Hydro Electric Line & Distribution	55
Total Initial Capital	\$645

Cost Element	Sustaining Capital (\$M) ^{1,2}
Production Shaft	143
Mining Equipment	140
Development	158
Tailings & Water Treatment	63
Paste Distribution Network	13
Underground Infrastructure	45
Surface Infrastructure	26
Closure	8
Total Sustaining Capital	\$594

¹. All values stated are undiscounted. No depreciation of costs was applied.

². Non-IFRS financial performance measures with no standardized definition under IFRS.

¹. All values stated are undiscounted. No depreciation of costs was applied.

². Non-IFRS financial performance measures with no standardized definition under IFRS.

Total cash costs are reflective of the cost of production. Total cash costs reported in the PEA include mining costs, processing, general and administrative costs of the mine, off-site costs, refining costs, transportation costs and royalties. Total cash costs per ounce is calculated as total cash costs divided by payable gold ounces.

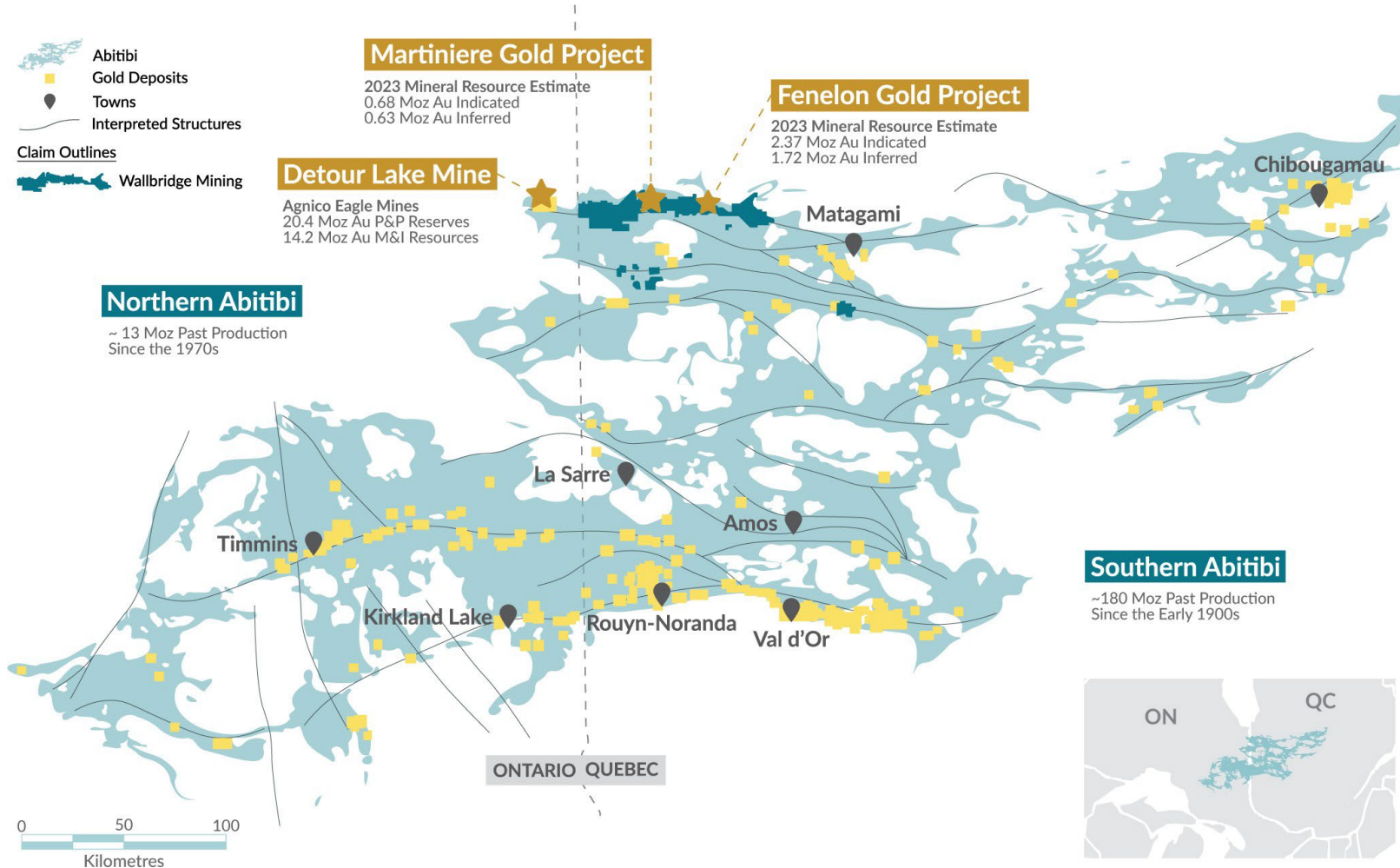
All-in sustaining costs and all-in sustaining costs per ounce are reflective of all of the expenditures that are required to produce an ounce of gold from operations. All-in sustaining costs reported in the PEA include total cash costs, sustaining capital, closure costs, but exclude corporate general and administrative costs. All-in sustaining costs per ounce is calculated as all-in sustaining costs divided by payable gold ounces.

A description of the significant cost components that make up the forward looking non-IFRS financial measures of total cash costs and all in sustaining costs per ounce of payable gold produced is shown in the table.

	Payable Ounces	LOM Costs (Millions)	US\$ Per Ounce
Cash Operating Costs	2,606,384	2,299.4	679
Royalties		237.2	70
Total Cash Costs		2,536.6	749
Sustaining Capital Expenditures and Closure		594.4	175
All in Sustaining Costs		3,131.0	924

Abitibi Greenstone Belt

North vs. South



Northern vs. Southern Abitibi

- Similar geology
- World-Class potential demonstrated (40 Moz Detour Lake)
- Less exploration maturity due to:
 - Less accessible in the past
 - Farther from urban centers
 - No surface outcrops

Note: Above numbers are total known endowments based on current NI-43-101 resources Sources: SIGÉOM, CONSOREM, Company Websites, Visual Capitalist

District Scale – Detour-Fenelon Gold Trend



Multi-Million Ounce Potential

Detour Lake Mine (Agnico Eagle Mines)

40 Moz Au Endowment
730,000+ koz
2022 Production

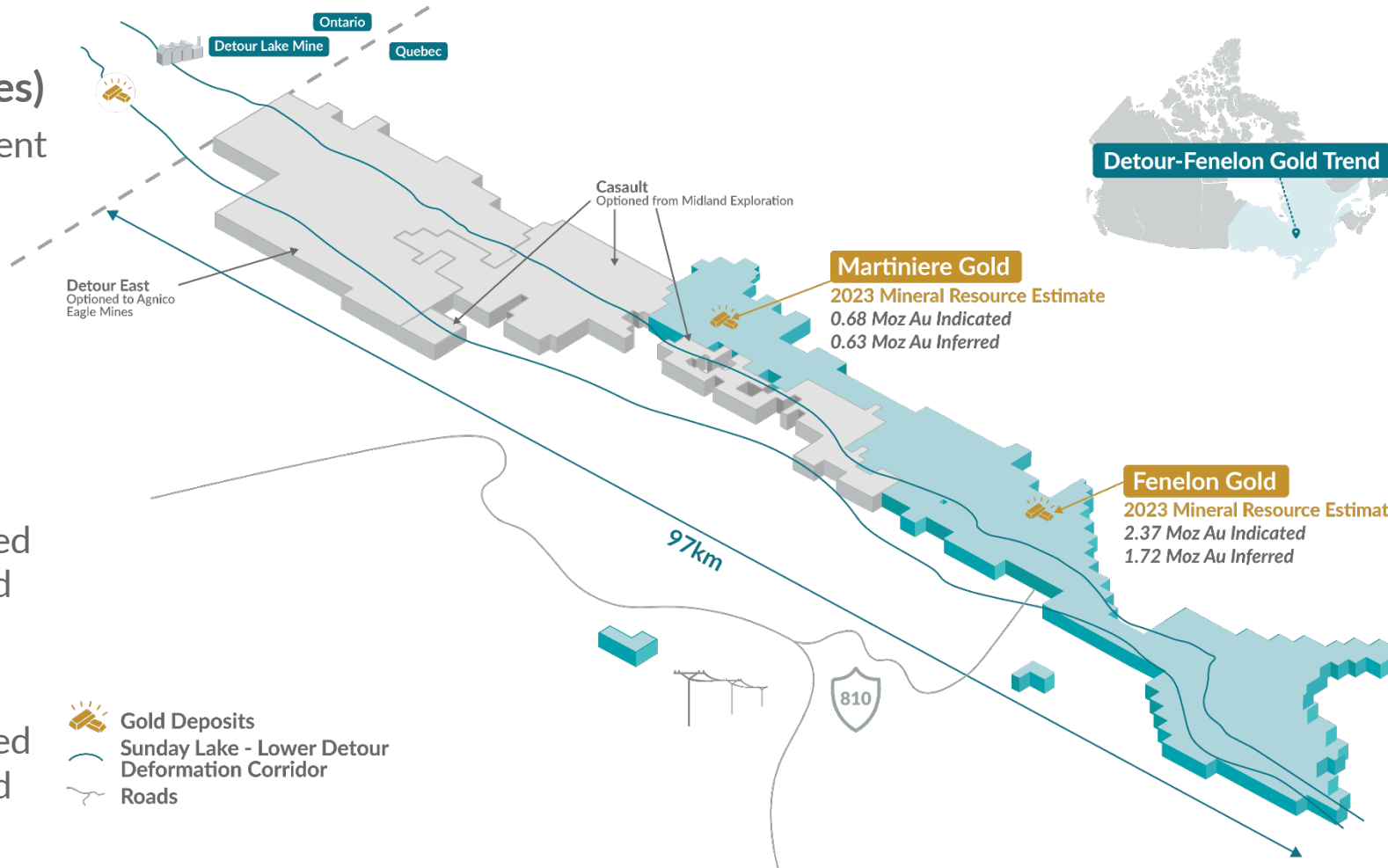
Wallbridge 2023 Mineral Resource Estimate

Fenelon Gold

2.37 Moz Au Indicated
1.72 Moz Au Inferred

Martiniere Gold

0.68 Moz Au Indicated
0.63 Moz Au Inferred



- 
MULTI-MILLION OUNCE DEPOSIT

- 
GROWTH POTENTIAL

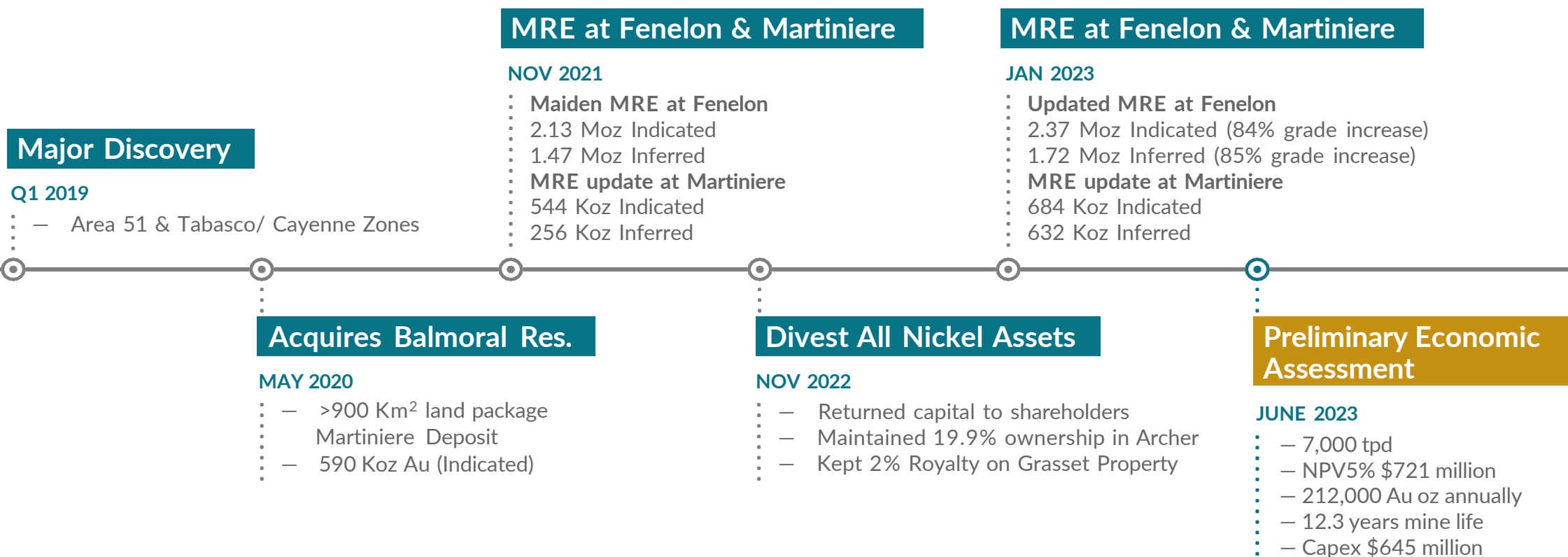
- 
2 GOLD DEPOSITS

- 
TOP JURISDICTION

- 
DISTRICT SCALE

Project Timeline

From Discovery to Economic Study

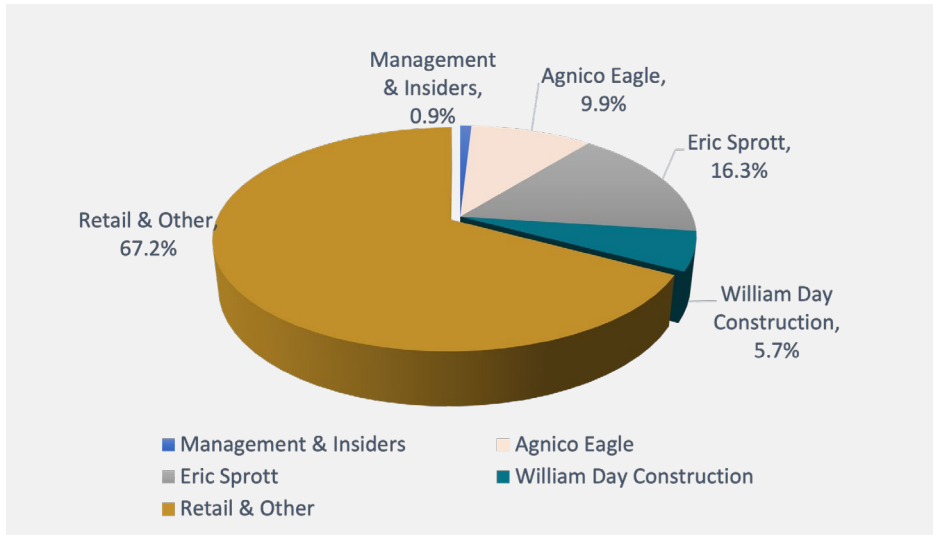


ESG

Continuous Improvement

 <p>Social Responsibility</p>	<ul style="list-style-type: none"> – Local sourcing from Abitibi to every extent possible – Local hiring from Abitibi and surrounding First Nation communities – Supporting business startup – Supporting research projects 	 <p>Health, Safety, & Wellbeing</p>	<ul style="list-style-type: none"> – 2019 gold award in health & safety from the PDAC – Prioritizing EHS system evolution – Stringent COVID-19 measures and testing protocols – Health, Safety, Environmental and Community Policies in place
 <p>Environment</p>	<ul style="list-style-type: none"> – Inaugural ESG report in 2022 – Reducing GHGs by implementing group transportation – Discharging water to Directive 019 at Fenelon – Cleanup of sites from previous owners 	 <p>Cultural Heritage & Diversity</p>	<ul style="list-style-type: none"> – 25-30% Indigenous workforce – Developed cultural awareness program – Constructed cultural center – Signed PDA with Cree Communities
 <p>Economic Contributions</p>	<ul style="list-style-type: none"> – \$1.5M commitment to road improvements – \$27M in expenditures on regionally-sourced supplies & services in 2022 – Encourage service providers to include indigenous components within their business 	 <p>Governance</p>	<ul style="list-style-type: none"> – Compensation linked to company performance – Board diversity – Insider trading & whistle blowing policies in effect

Supportive Shareholder Base



Share Structure – November 2, 2023

52-Week Trading Range	\$0.09-\$0.24
Shares Outstanding – Basic	1,016.2M
Shares Outstanding - Fully-diluted**	1,050.9M
Cash & Cash Equivalents - 30/09/2023	~27.1M

**27,687,312 options outstanding with an exercise price of \$0.36 and a weighted average life of 4.7 years
 **500,000 warrants outstanding with an exercise price of \$1.00 and a weighted average life of 1.4 years
 **6,415,012 DSUs (Deferred Stock Units) outstanding

Analyst Coverage

Andrew Mikitchook



Nicolas Dion



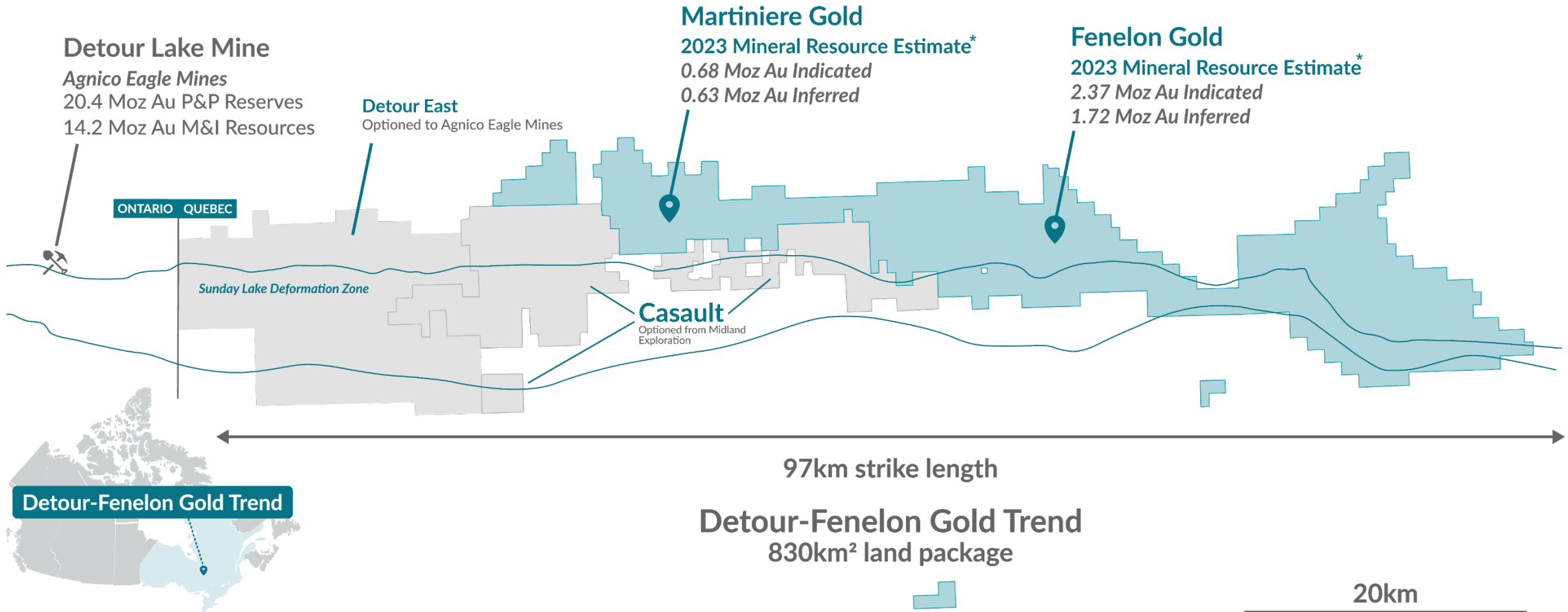
Jacques Wortman



Don Blyth



Detour-Fenelon Gold Trend Mineral Resource Estimates



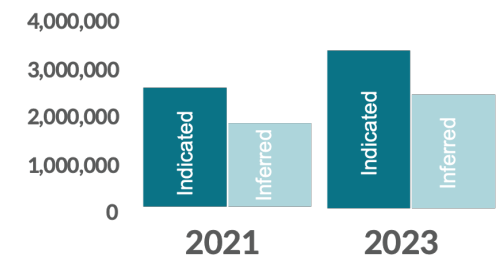
* For details of the 2023 MRE, please refer to NI 43-101 Technical Report filed on August 10, 2023, on SEDAR+.

Focus on a Sustainable Growth Strategy

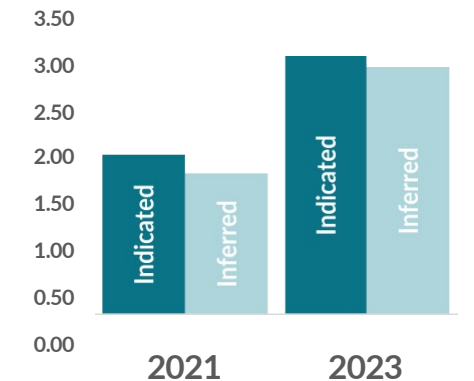
Detour-Fenelon Gold Trend Mineral Resource Estimate

Detour Fenelon Gold Trend	Category	Cut-off Grade (Au g/t)	Metric Tonnes (t)	Grade (Au g/t)	Troy Ounces (oz Au)
Fenelon	Indicated	in Pit > 0.45	727,400	4.46	104,400
		UG > 1.50	20,931,700	3.37	2,265,200
			21,659,100	3.40	2,369,600
	Inferred	in Pit > 0.45	303,900	4.08	39,800
		UG > 1.50	18,181,400	2.87	1,678,500
			18,485,300	2.89	1,718,400
Martiniere	Indicated	in Pit > 0.55	7,757,700	2.14	534,100
		UG > 2.40/2.60	1,285,100	3.64	150,300
			9,042,800	2.35	684,300
	Inferred	in Pit > 0.55	2,652,400	1.83	156,400
		UG > 2.40/2.60	3,542,500	4.18	475,900
			6,194,900	3.17	632,300
Total	Indicated		30,701,900	3.09	3,054,000
	Inferred		24,680,200	2.96	2,350,700

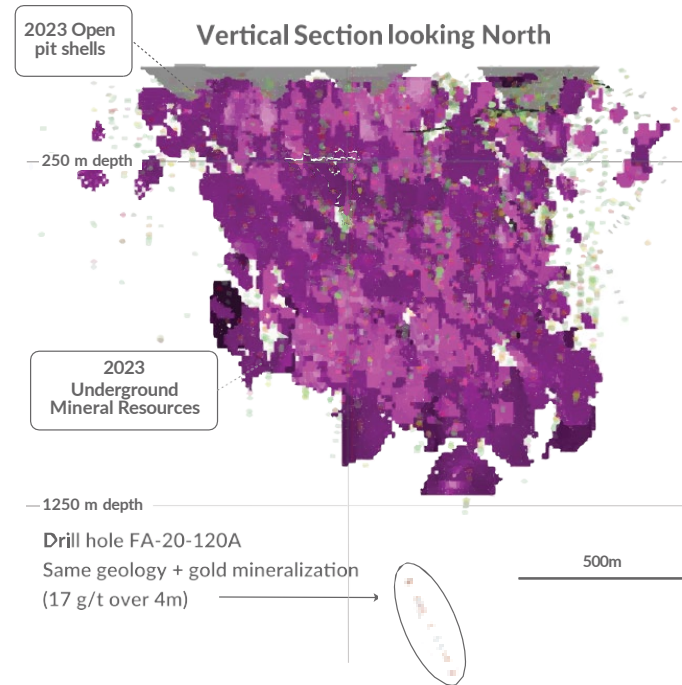
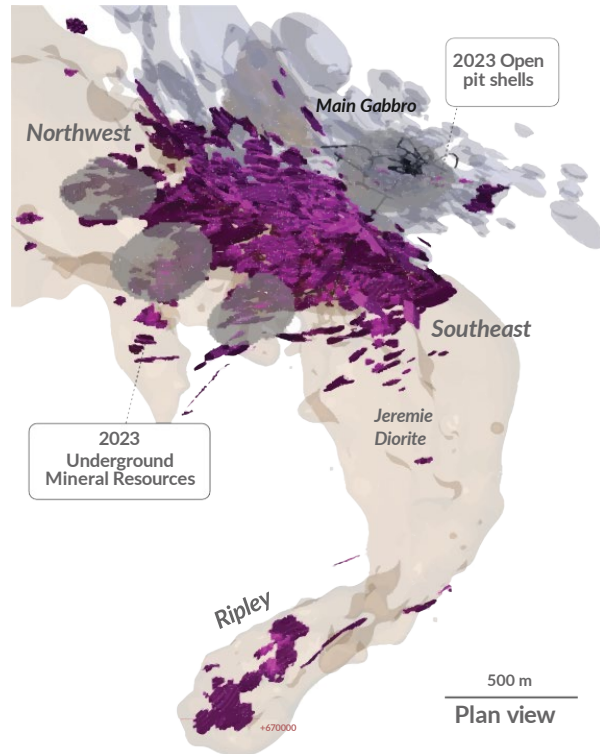
Detour-Fenelon Gold Trend
Total Contained Ounces



Detour-Fenelon Gold Trend Au g/t grade



2023 Mineral Resource Estimate Update



2023 MRE

- Smaller open pits 90-150 m deep
- Predominately underground resource
- 58% of resource in Indicated category

Significant additions

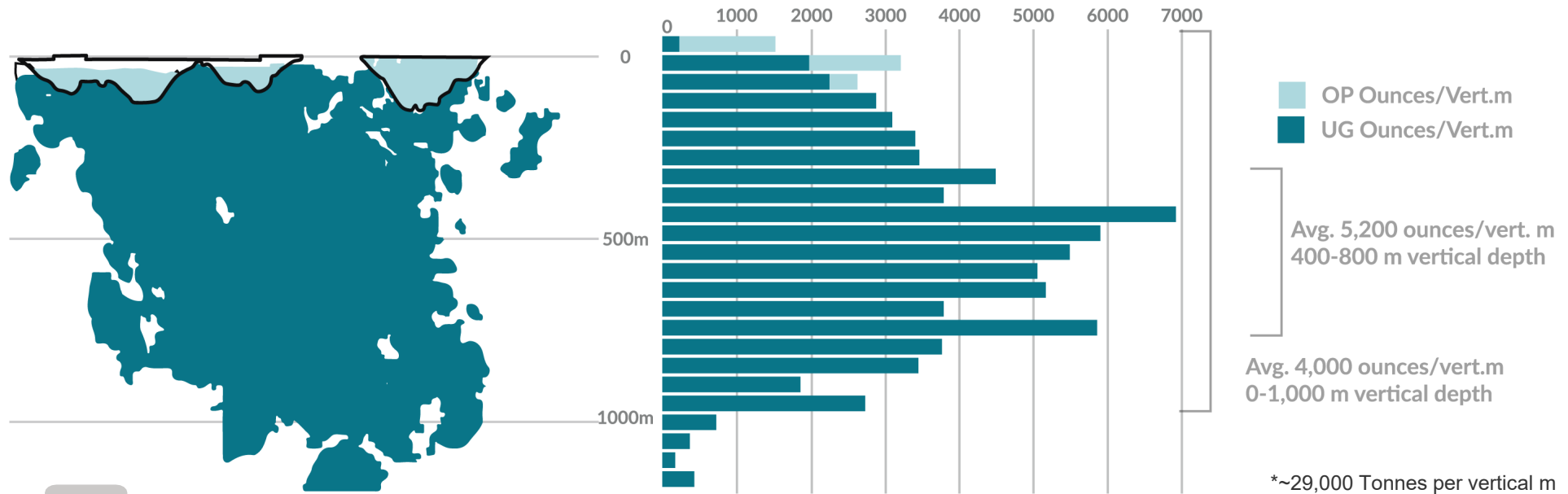
- Northwest
- Southeast
- Ripley

		2023		
Fenelon Gold Property		Tonnes	Au g/t	Ounces
Open Pit	Indicated	727,400	4.46	104,400
	Inferred	303,900	4.08	39,800
Underground	Indicated	20,931,700	3.37	2,265,200
	Inferred	18,181,400	2.87	1,678,500
Total	Indicated	21,659,100	3.40	2,369,600
	Inferred	18,485,300	2.89	1,718,400

* For details of the 2023 MRE, please refer to NI 43-101 Technical Report filed on August 10, 2023, on SEDAR+.

Fenelon Gold vs. Other Abitibi Deposits

Gold concentration – Ounces per vertical metres



PEA HIGHLIGHTS

A great starting point

All results reported in Canadian dollars unless otherwise indicated



ANNUAL GOLD PRODUCTION	ANNUAL FREE CASHFLOW	INITIAL CAPITAL	SUSTAINING CAPITAL
212,000 Ounces	\$157 Million	\$645 Million	\$594 Million
TOTAL CASH COSTS ^{1,2}	AISC ^{2,3}	AFTER-TAX NPV 5%	AFTER-TAX INTERNAL RATE OF RETURN
\$749 US\$/oz	\$924 US\$/oz	\$721 Million	18 %

1. Total cash costs include mining, processing, tailings, surface infrastructures, transport, G&A and royalty costs.

2. Non-IFRS financial performance measures with no standardized definition under IFRS. Refer to note on slide 3 of this presentation.

3. All-in sustaining cost ("AISC") includes total cash costs, sustaining capital expenses to support the on-going operations, and closure and rehabilitation costs divided by payable gold ounces

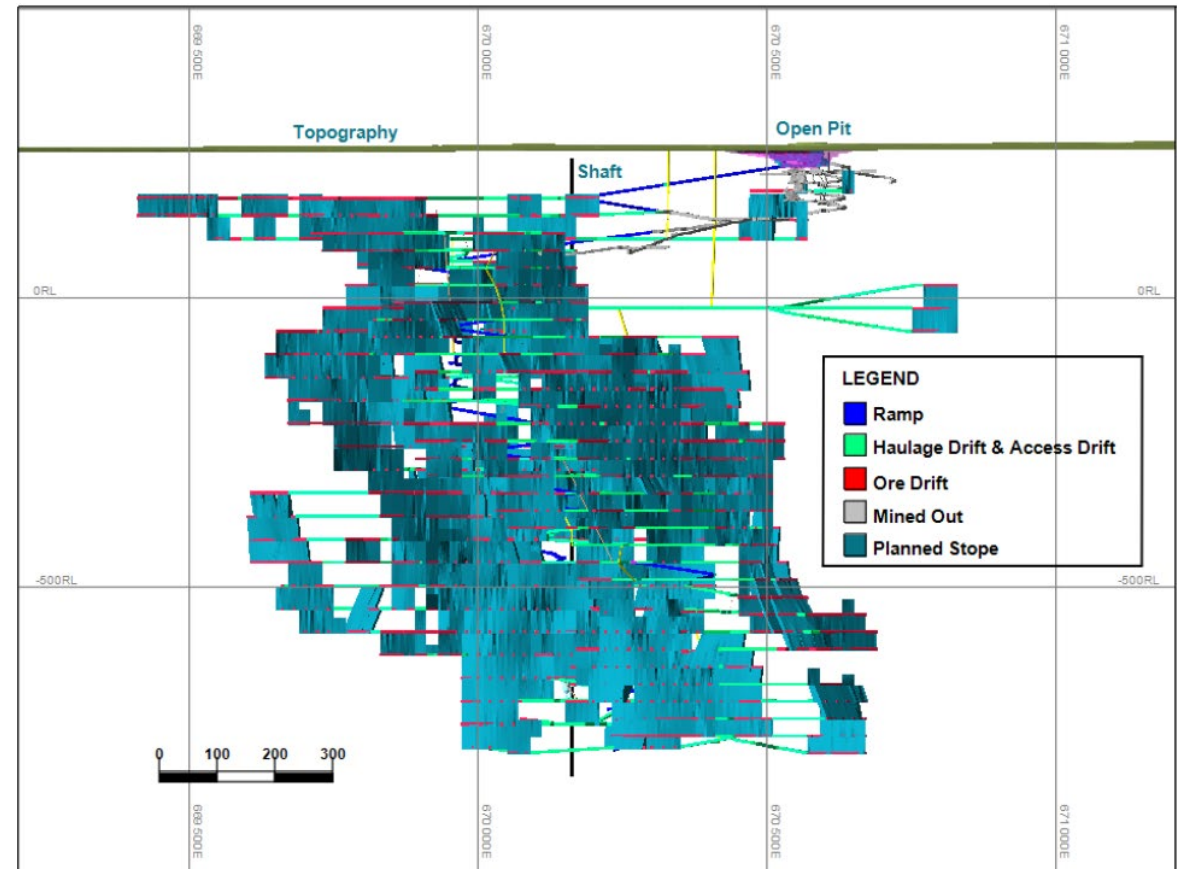
FENELON PEA-APPROACH

First principles approach, realistic costs

PEA Approach

- First principles: new project starting with a clean slate
- Stope optimization: Iterative process to develop a large UG operation according to MRE, rock mechanics and projected stope productivity
- Trade-off studies: material handling, tailings management, mobile equipment
- Capex: Integrate existing infrastructure, approach by phase
- Opex: Detailed evaluation, current (2023) costs; benchmarking against similar operations

Longitudinal section looking North



FENELON PEA- PROJECT PHASES

2 years pre-production, 12 years production

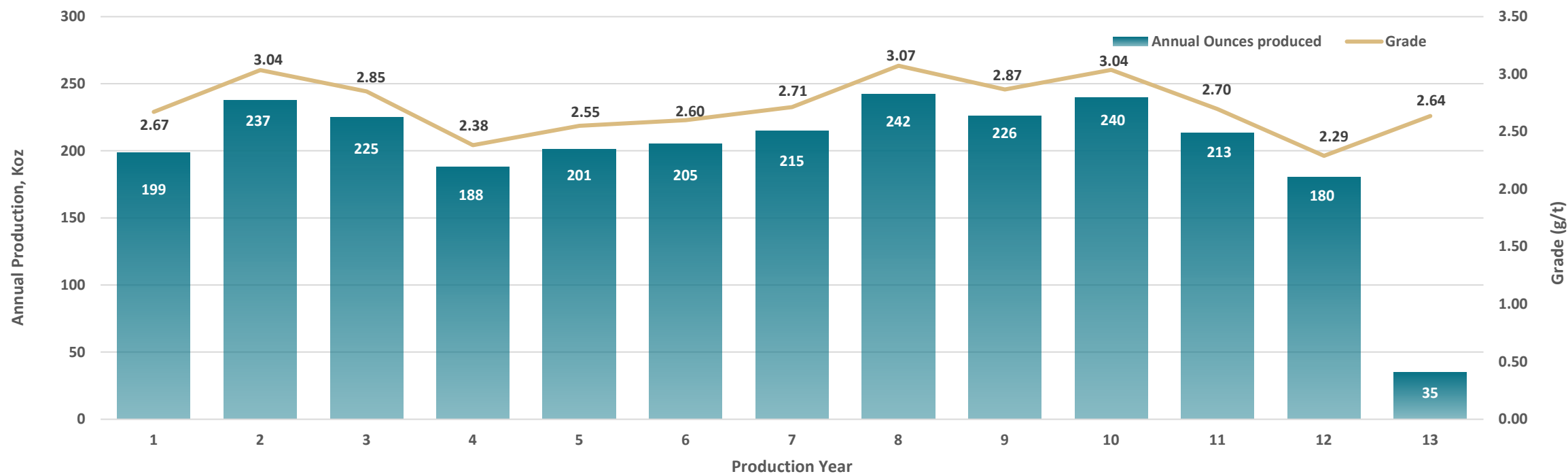
PHASE	YEARS	ACTIVITIES
<ul style="list-style-type: none"> Pre-production 	<p>Pre-production Year 1 & 2</p>	<p>Infrastructure construction:</p> <ul style="list-style-type: none"> – Power line, camp expansion – Mine site, mill plant, paste plant, tailing management site – Water treatment <p>UG Development:</p> <ul style="list-style-type: none"> – Dewatering, main ramp, ventilation raise, stope preparation
<ul style="list-style-type: none"> Production Via Ramp 	<p>Production Year 1 to 4</p> <ul style="list-style-type: none"> – Mining at 7,000 tpd – Milling at 7,000 tpd 	<p>Infrastructure construction:</p> <ul style="list-style-type: none"> – Shaft headframe and hoist installation – Tailing management site expansion <p>UG Development:</p> <ul style="list-style-type: none"> – Main ramp, ventilation raise, ore pass, shaft, sinking stope preparation
<ul style="list-style-type: none"> Production Via Shaft 	<p>Production Year 5 to 12</p> <ul style="list-style-type: none"> – Mining at 7,000 tpd – Milling at 7,000 tpd 	<p>Infrastructure construction:</p> <ul style="list-style-type: none"> – Tailing management site expansion <p>UG Development:</p> <ul style="list-style-type: none"> – Ventilation raise, ore pass, stope preparation

FENELON PEA

Average annual gold production of 212,000 ounces per year

Total Production of 2.6 Moz over 12-year mine life

Production Profile

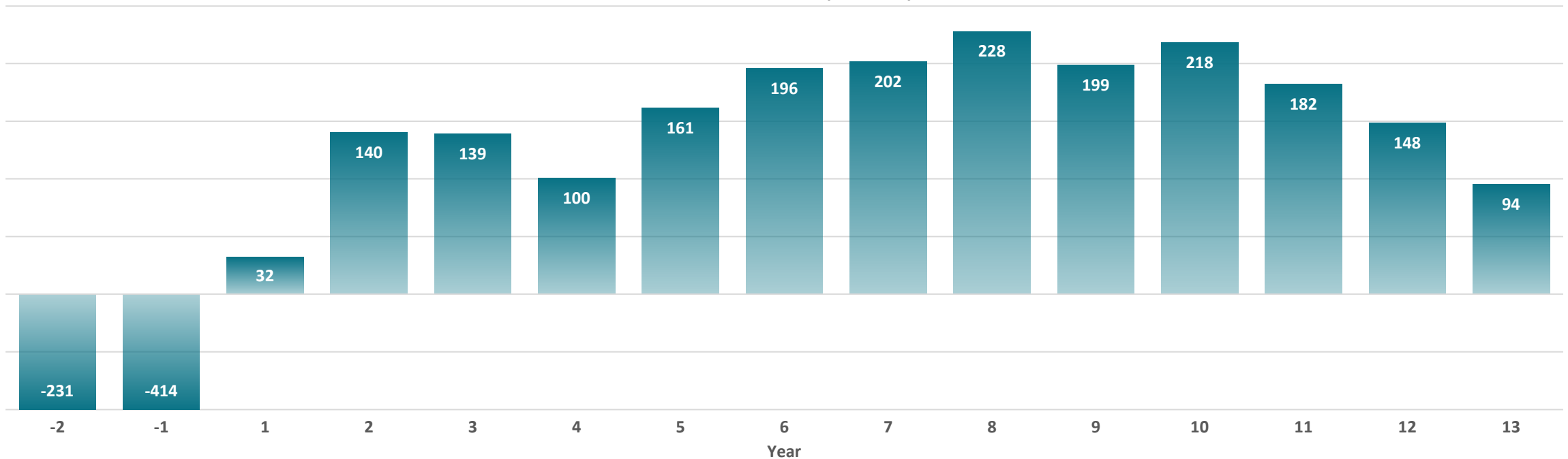


FENELON PEA

Strong free cash flow generation over 12-year mine life

Average annual after-tax cash flow of \$157 million

After-Tax Cash Flow (\$Million)



FENELON PEA

Efficient capital allocation

Initial Capital Expenditures

Cost Element	Initial Capital (\$M) ^{1,2}
Mill	220
Paste Plant	46
Tailings and Water Treatment	36
Capitalized Operating (Pre-production)	99
Surface Civil & Infrastructure	87
Mining Equipment	18
Underground Development	83
Hydro Electric Line & Distribution	55
Total Initial Capital	\$645

Sustaining Capital Expenditures

Cost Element	Sustaining Capital (\$M) ^{1,2}
Production Shaft	143
Mining Equipment	140
Development	158
Tailings & Water Treatment	63
Paste Distribution Network	13
Underground Infrastructure	45
Surface Infrastructure	26
Closure	8
Total Sustaining Capital	\$594

Total Cash Cost

	LOM Total \$ million	Average LOM (\$/tonne milled)	Average LOM (US\$/oz)
Mining	1,320	42.7	391
Processing	521	16.8	153
Water Treatment & Tailings	51	1.6	15
General & Admin.	408	13.2	120
Royalty (4%)	237	7.7	70
Total Cash Costs^{2,3}	2,537	82.0	749

1. All values stated are undiscounted. NO depreciation of costs was applied..

2. Non-IFRS financial performance measures with no standardized definition under IFRS. Refer to note on slide 3 of this presentation.

3. Total operating cost include mining, processing, tailings, surface infrastructure, transport, G&A and royalty costs.

PEA SENSITIVITY ANALYSIS

Double digit IRR across gold price scenarios

Gold Price US \$/oz	FX	NPV \$M	IRR %	Payback Years
\$1,600	1.30	512	14	6.2
\$1,750	1.30	721	18	5.4
\$1,900	1.30	923	21	4.6
\$1,950 – Spot	1.34	1,070	24	4.2

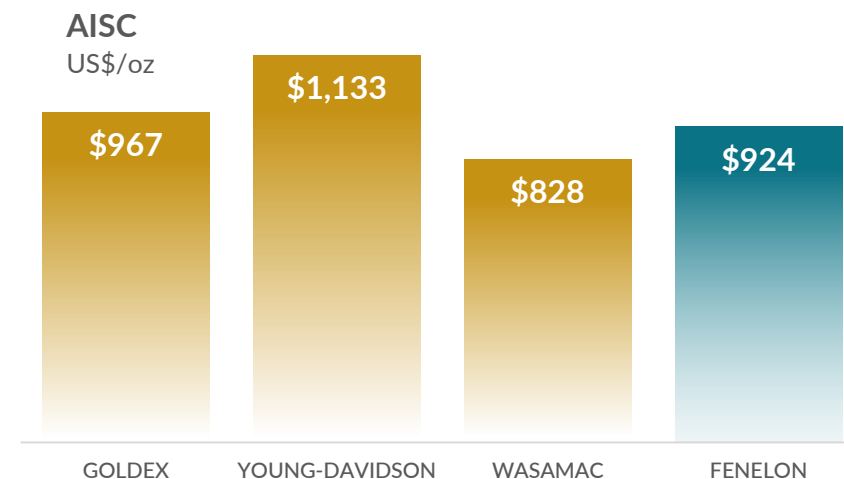
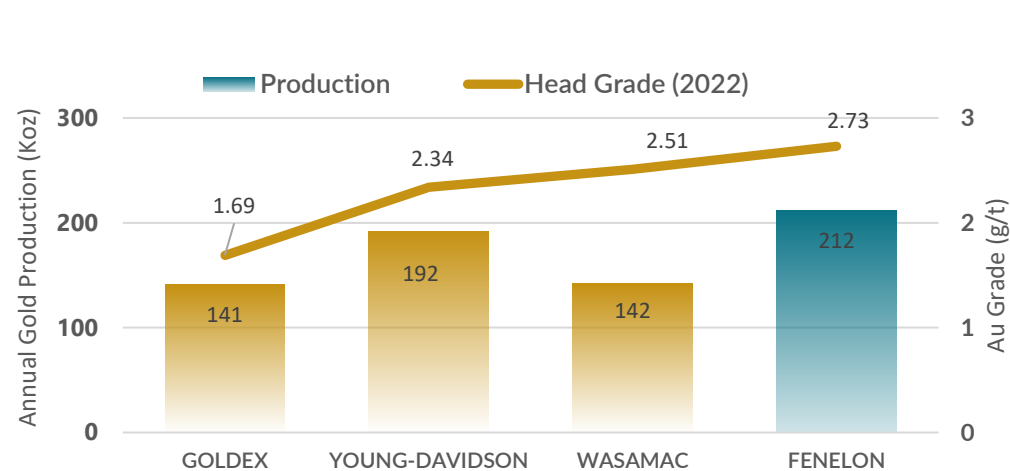
	NPV \$M
Operating Costs	
Base Case -10%	823
Base Case	721
Base Case +10%	614
Base Case +20%	506

	NPV \$M
Capital Costs	
Base Case -10%	786
Base Case	721
Base Case +10%	653
Base Case +20%	586

FENELON PEA COMPARABLES

Similar bulk mining operations in Abitibi

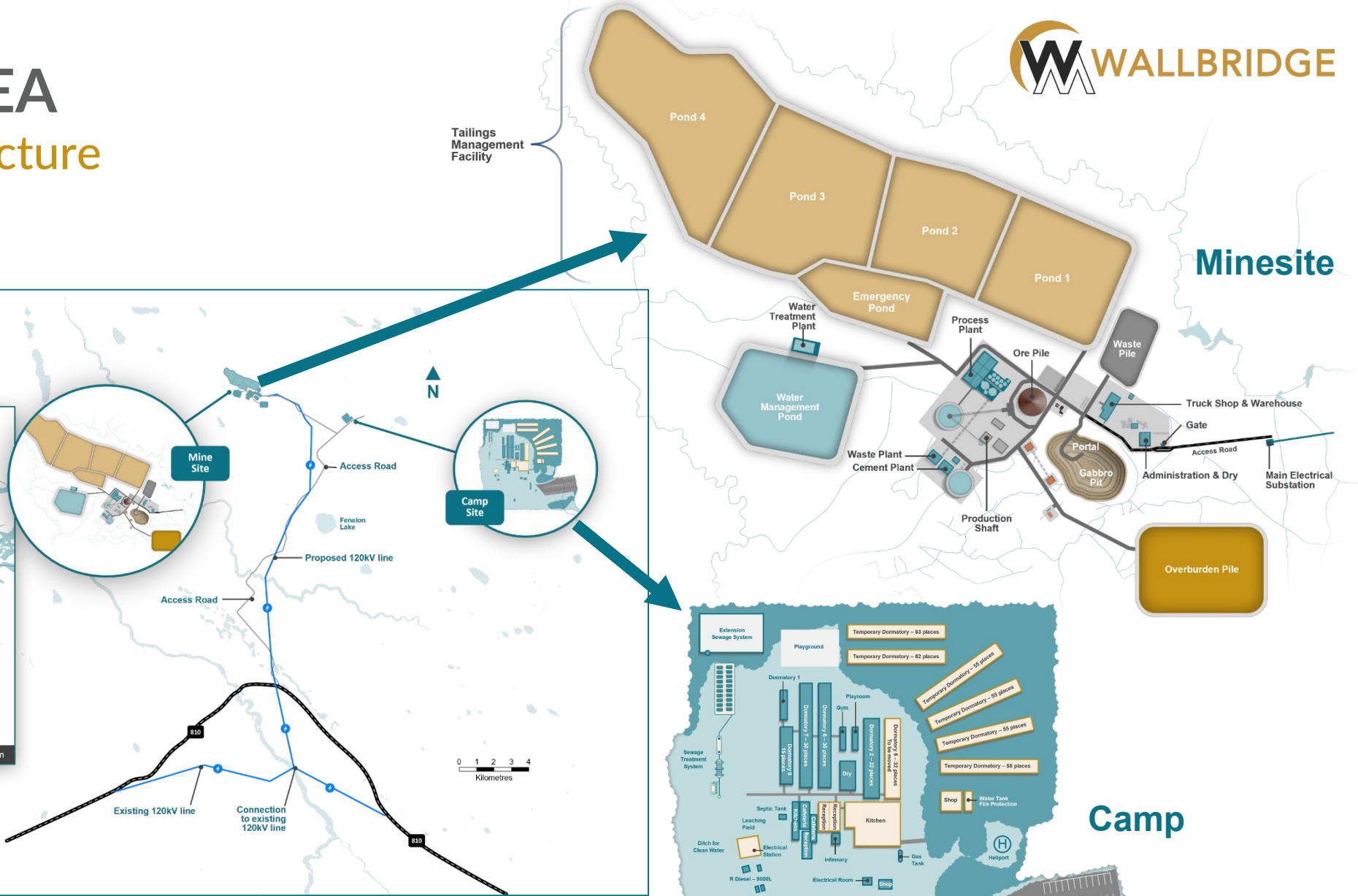
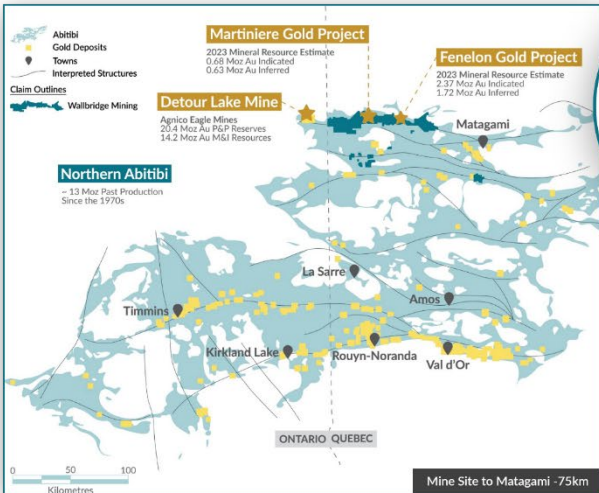
		GOLDEX	YOUNG-DAVIDSON	WASAMAC	FENELON
		Agnico Eagle Mines	Alamos	Agnico Eagle Mines	Wallbridge
Stage		Production/2008	Production/2012	Feasibility/2021	PEA/2023
Depth	metres	800-1,500	210-1,500	0-845	0-1,040
Mineral Resource Estimate preceding construction decision		1.91 Moz @ 2.12 g/t	3.16 Moz @ 3.04 g/t	N/A	2.37 Moz @ 3.40 g/t Indicated 1.72 Moz @ 2.89 g/t Inferred
Proven & Probable Reserves (YE 2021)	oz Au	998,000	3,394,000	2,170,000	2,715,000 ⁽¹⁾ Only PEA which includes Indicated and Inferred



⁽¹⁾ The reader is advised that the PEA summarized here is intended to provide only an initial, high-level review of the project potential and design options. The PEA mine plan and economic model include numerous assumptions and the use of inferred mineral resources. Inferred mineral resources are considered to be too speculative to be used in an economic analysis except as allowed for by NI 43-101 in PEA studies. There is no guarantee that inferred mineral resources can be converted to indicated or measured mineral resources, and as such, there is no guarantee the project economics described herein will be achieved.

FENELON PEA

Surface infrastructure



Powerline

FENELON PEA

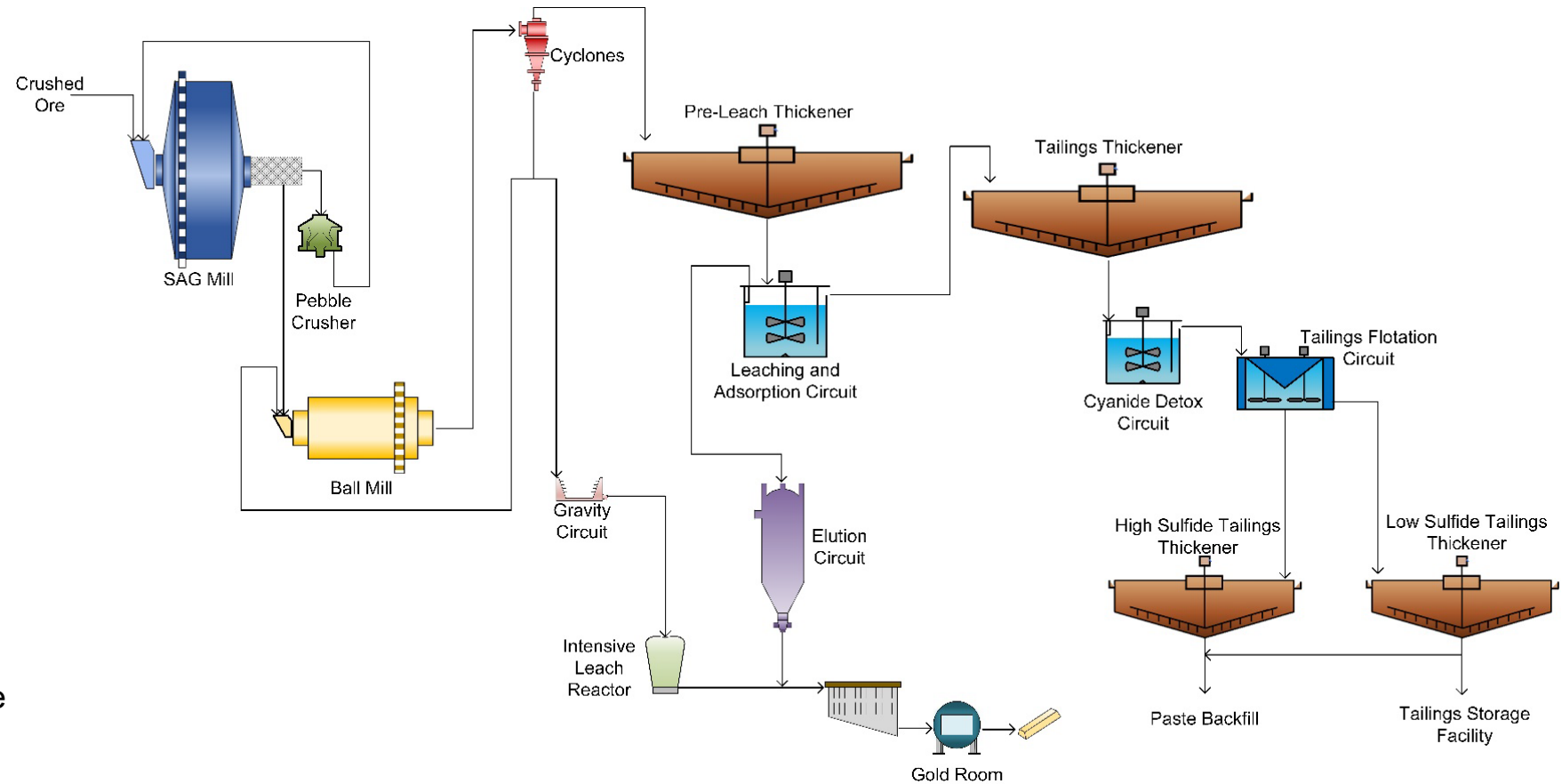
Metallurgy & processing, a simple flowsheet

Metallurgy

- **Metallurgical Testing:**
 - Testing representative Tabasco-Cayenne & Area 51 material
- **Gravity Gold Recoveries**
 - up to 66.5% for Tabasco/Cayenne
 - up to 84.3% for Area 51
- **Cyanidation and flotation testing**
- **Overall Gold Recovery: 96%**

Processing

- **A simple flowsheet**
 - Gravity, CIL, Elution, Gold Room
 - Flotation on detox residue to produce desulfurized tailings



FENELON PEA ENVIRONMENT, PERMITTING

An exceptional approach with First Nations

Stakeholder engagement:

- Over 130 engagement activities with stakeholders
- Regular meetings with the First Nation communities of Washaw Sibi, Waskaganish and Abitibiwinni (Pikogan)
- Pre-development agreement in place with the Cree communities of Washaw Sibi and Waskaganish
- About 25% of the workforce from First Nations

Permitting, current status:

- Meeting obligations for effluent regulations (pit dewatering)
- Required permits for surface drilling

Permitting, ongoing work:

- Acquisition of baseline environmental knowledge on the Fenelon property since 2021
- Physical and biological environment characterisation: Hydrogeological, ambient air quality, terrestrial vegetation and wetlands, fauna
- To date, no major environmental issues have been identified in the work undertaken.

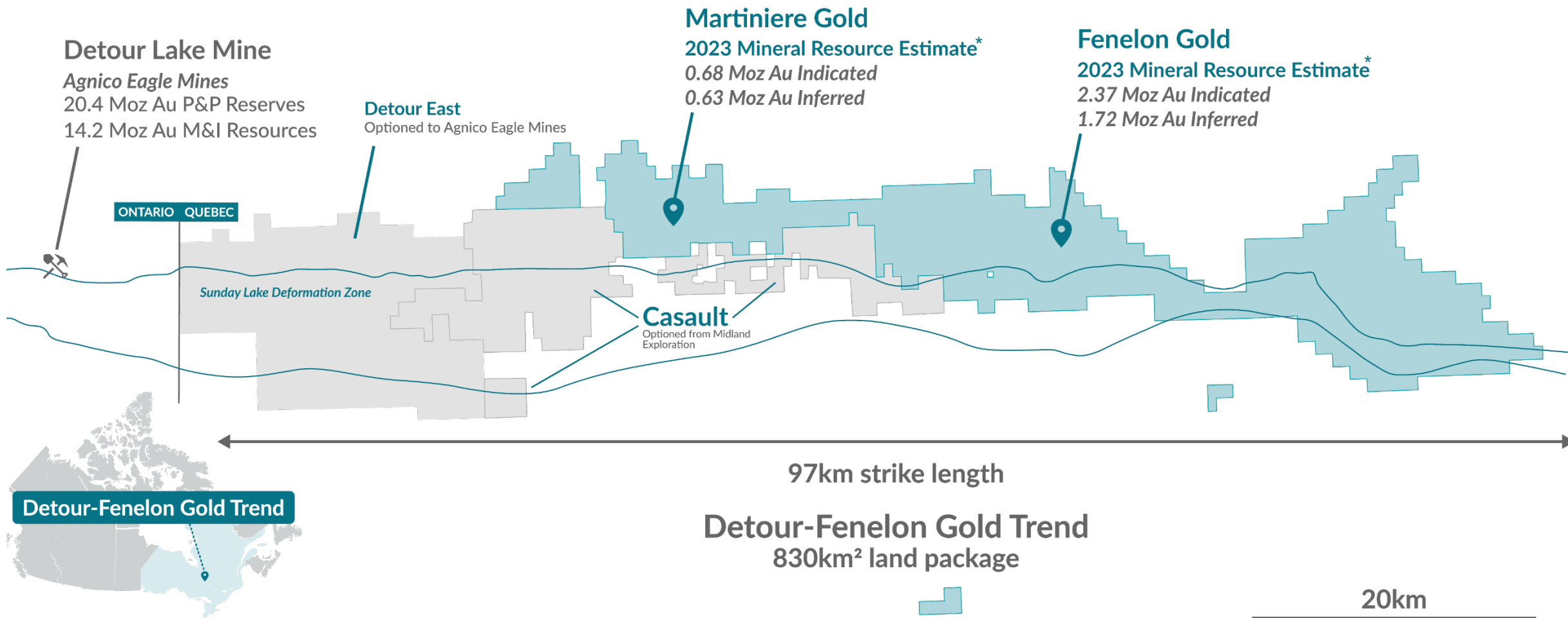


FENELON PEA OPPORTUNITIES

Open in all directions and still growing

Opportunity	Potential Benefits to:
Additional infill drilling at Fenelon	Increase the resource grade and ounces and convert more inferred to measured and indicated categories
Additional exploration drilling at Fenelon	Increase the mineral resources and extend mine life since the deposit is open in all directions
Additional technical studies (borrow pits, geotechnical investigation, hydrogeology, geochemical)	Improve project economics by reducing the capital requirements and operating costs
Additional geotechnical/rock mechanics	Reduce crown pillar thicknesses thus increasing overall ounces
Additional metallurgical studies, paste fill testing, and tailings testing	Lower project operating costs
Additional waste rock sampling	Identify clean waste rock to reduce site infrastructure costs
Additional drilling at Martiniere	Add organic production growth by increasing mineral resource and converting from inferred to measured and indicated categories
Additional exploration outside the current mineral resources	Identify new discoveries and add organic production growth considering the large, underexplored land package.

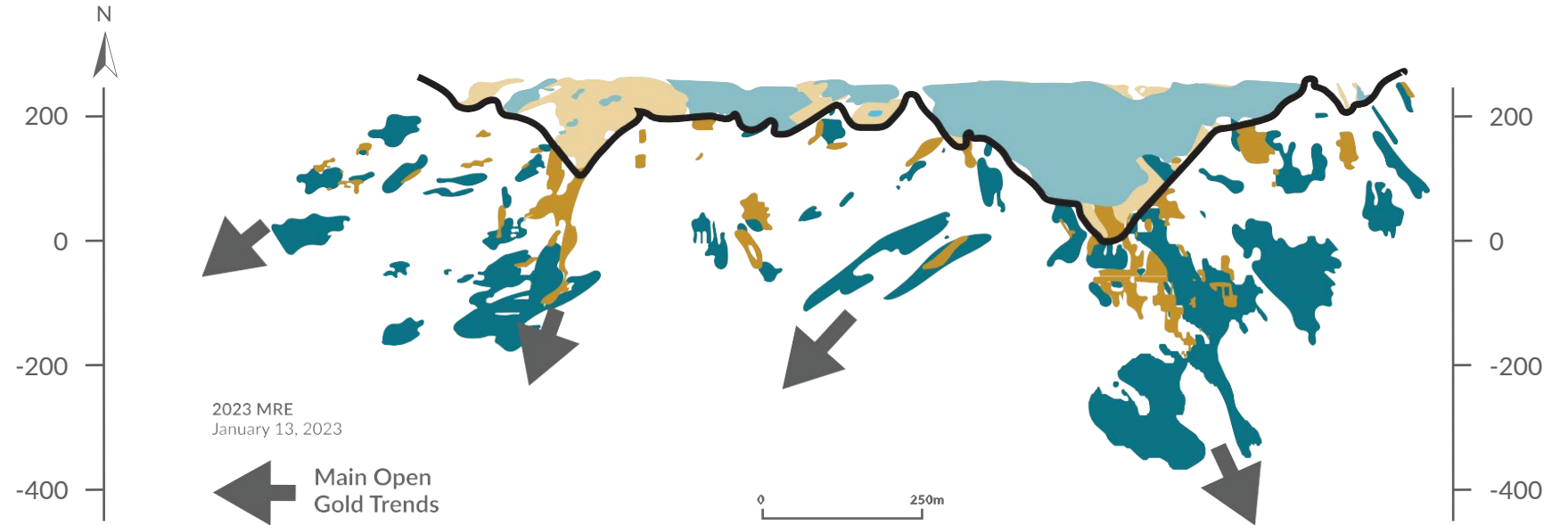
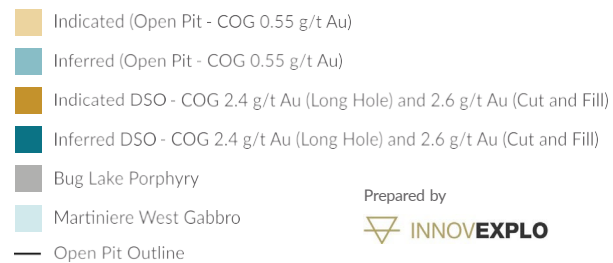
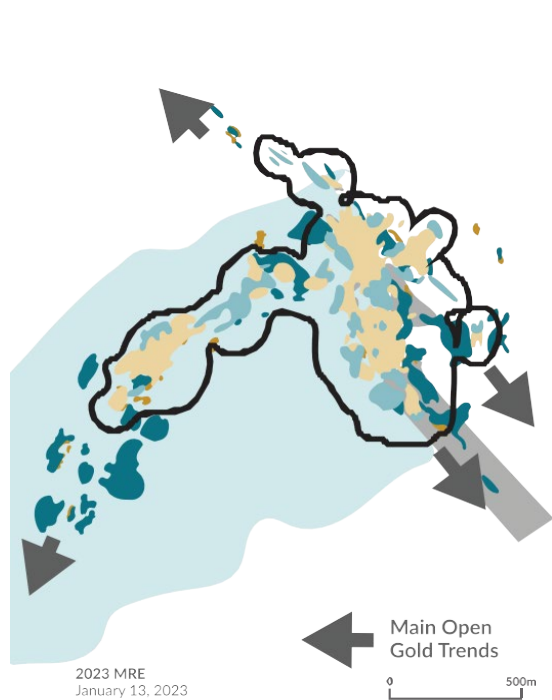
Detour-Fenelon Gold Trend Mineral Resource Estimates



* For details of the 2023 MRE, please refer to NI 43-101 Technical Report filed on August 10, 2023, on SEDAR+.

2023 Mineral Resource Estimate Update

Martiniere Gold Project



Martiniere Gold Property		2023		
		Tonnes	Au g/t	Ounces
Open Pit	Indicated	7,757,700	2.14	534,100
	Inferred	2,652,400	1.83	156,400
Underground	Indicated	1,285,100	3.64	150,300
	Inferred	3,542,500	4.18	475,900
Total	Indicated	9,042,800	2.35	684,300
	Inferred	6,194,900	3.17	632,300

- Initial Wallbridge drill program (2021-2022) successful in demonstrating expansion potential along strike and depth
- Remains largely untested below 400 m vertical depth

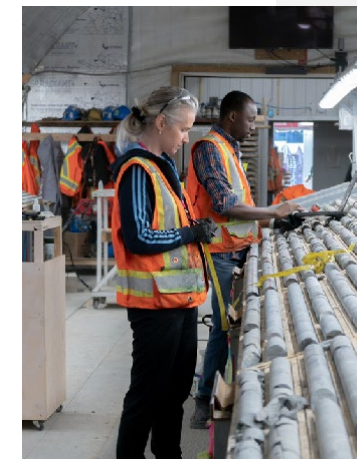
2023 Outlook

Expanding current resources while we continue to unlock the regional exploration value

2023 exploration program focusing on:

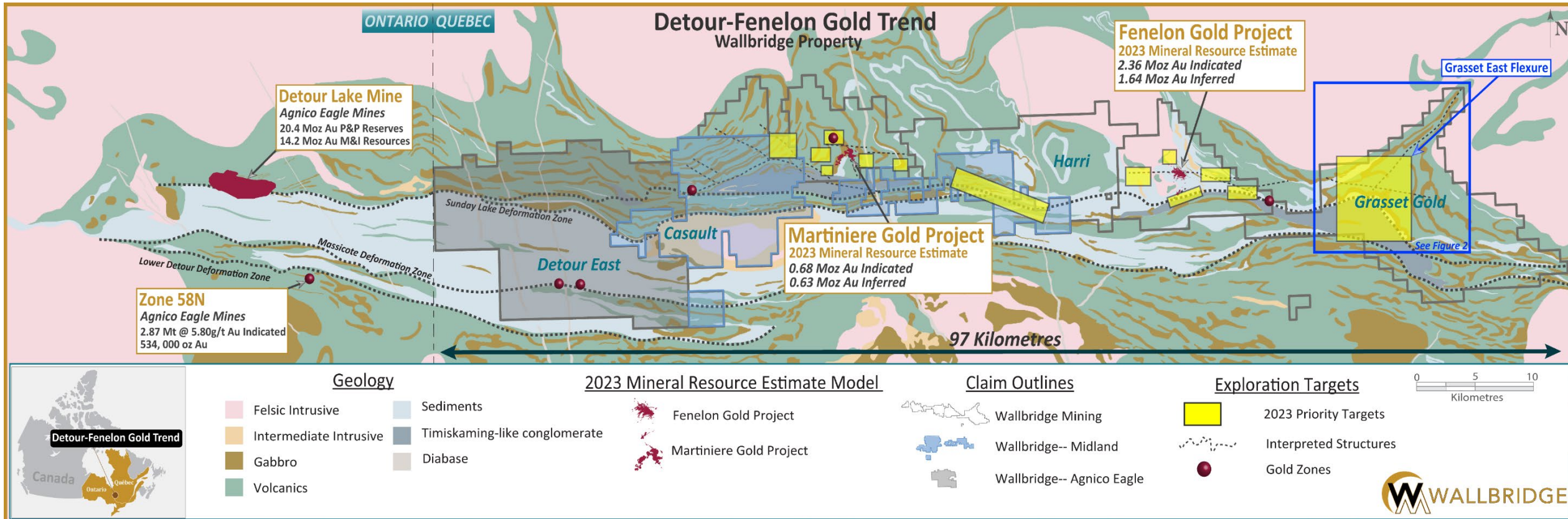
- Expansion of existing gold zones at Fenelon & Martiniere (large step-out drilling)
- Exploration for discovery of new deposits

2023 Work Program	Planned	Forecasted	Planned Expenditures	Forecasted Expenditures
Martiniere – Expansion of known mineralization and Exploration drilling	23,500 metres	17,500 metres	\$11,100,000	\$8,200,000
Fenelon – Expansion of known mineralization and Exploration drilling	15,000 metres	18,800 metres	\$8,200,000	\$9,900,000
Regional exploration – Exploration drilling, geophysics and other	11,000 metres	12,300 metres	\$7,100,000	\$6,400,000
Technical work (environmental, metallurgical, permitting studies and road improvement commitments)			\$5,100,000	\$4,000,000
General & Administration			\$4,500,000	\$4,000,000
Totals	49,500	48,600	\$36,000,000	\$32,500,000



2023 Exploration Program

...Expanding the deposit footprints and advance exploration pipeline



Martiniere ~17,900 m - diamond drilling + Geophysics, Fieldwork

Fenelon ~18,700 m diamond drilling + Technical Studies (Metallurgy etc.), Permitting, Environmental

Regional ~6,600 m diamond drilling + Geophysics, Field Work

Fenelon PEA: A Platform to **Grow**

*Growing multi-million-ounce
deposit with Tier 1 potential*



A Hub to Unlock District-Scale Opportunity

Potential for substantial future synergies with nearby Martiniere project, new discoveries on Wallbridge's extensive Detour-Fenelon land package.



Delivering Value to Shareholders

After-tax NPV_{5%} of \$721 million and substantial free cash flow generation over 12.3-year mine life, \$157 million average annual free cashflow, US\$924 AISC per payable Au ounce.



De-Risked and Achievable

Deep geological, project and technical expertise of Wallbridge team leveraged to produce a PEA using current cost data from contractors, suppliers and mining companies operating in the region to arrive at realistic projections.



Premier Location

Project site with existing transportation, energy infrastructure nearby and high-quality workforce in a mining-friendly jurisdiction.



Substantial ESG Advantages

Low carbon footprint driven by access to clean energy, combined with substantially less surface disturbance makes Fenelon an ESG leader.

TSX: WM
OTCQX: WLBMF



Thank you

Contact
Information:

Brian Penny, Interim CEO
E: bpenny@wallbridgeminig.com

Victoria Vargas, Capital Markets Advisor
E: vvargas@wallbridgeminig.com

 @WallbridgeWM

 @WallbridgeMining

 wallbridgeminig.com

Appendix

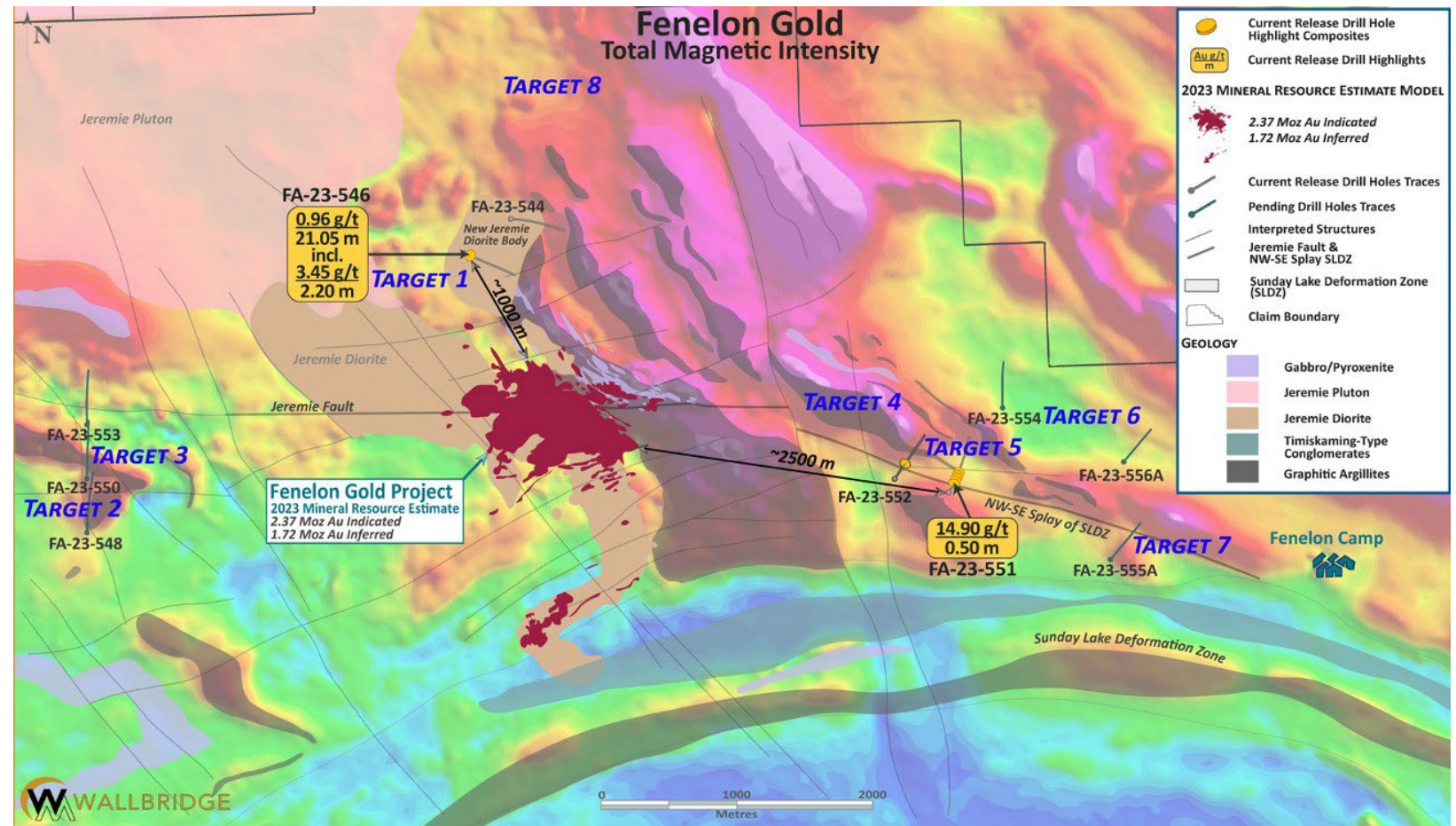
Solid team in place for future growth along the Detour-Fenelon Gold Trend



2023 Exploration Program

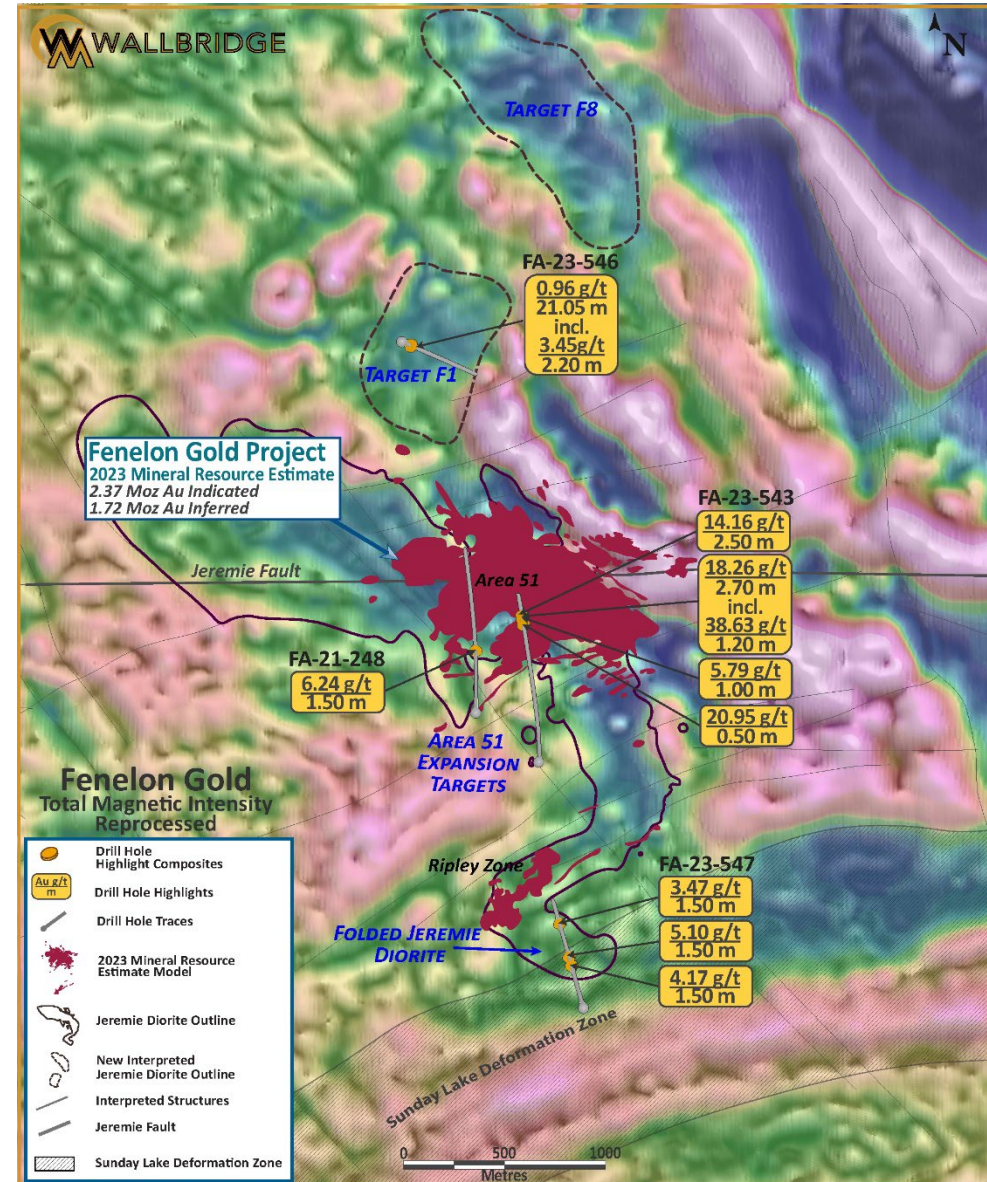
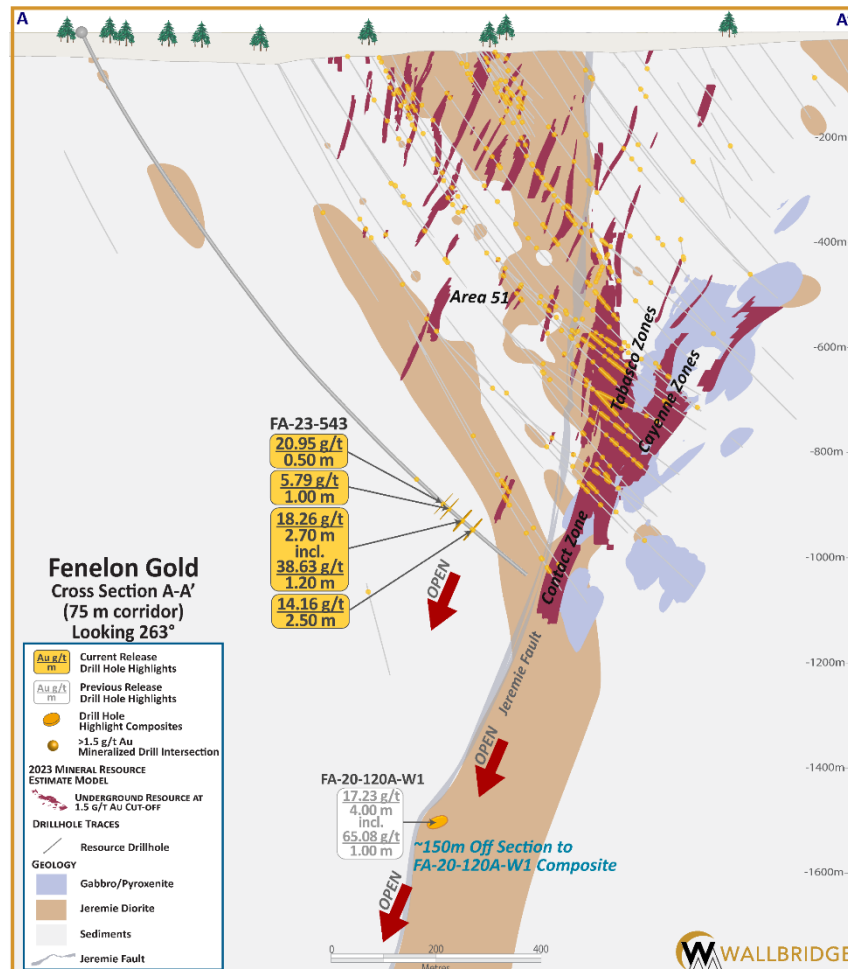
Two new gold zones at Fenelon

“The Target 1 intersection, located in a newly-discovered Jeremie Diorite body, has now opened up a new area for future exploration and shows the excellent potential to significantly expand the known extent of the mineralized footprint of our flagship project. The area extending several kilometres east of the Fenelon deposit had been identified as having the right geologic ingredients for gold deposition. Our initial results at Target 5 confirm our exploration thesis here.”



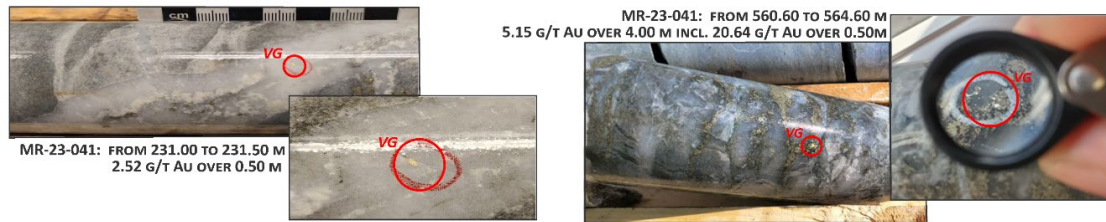
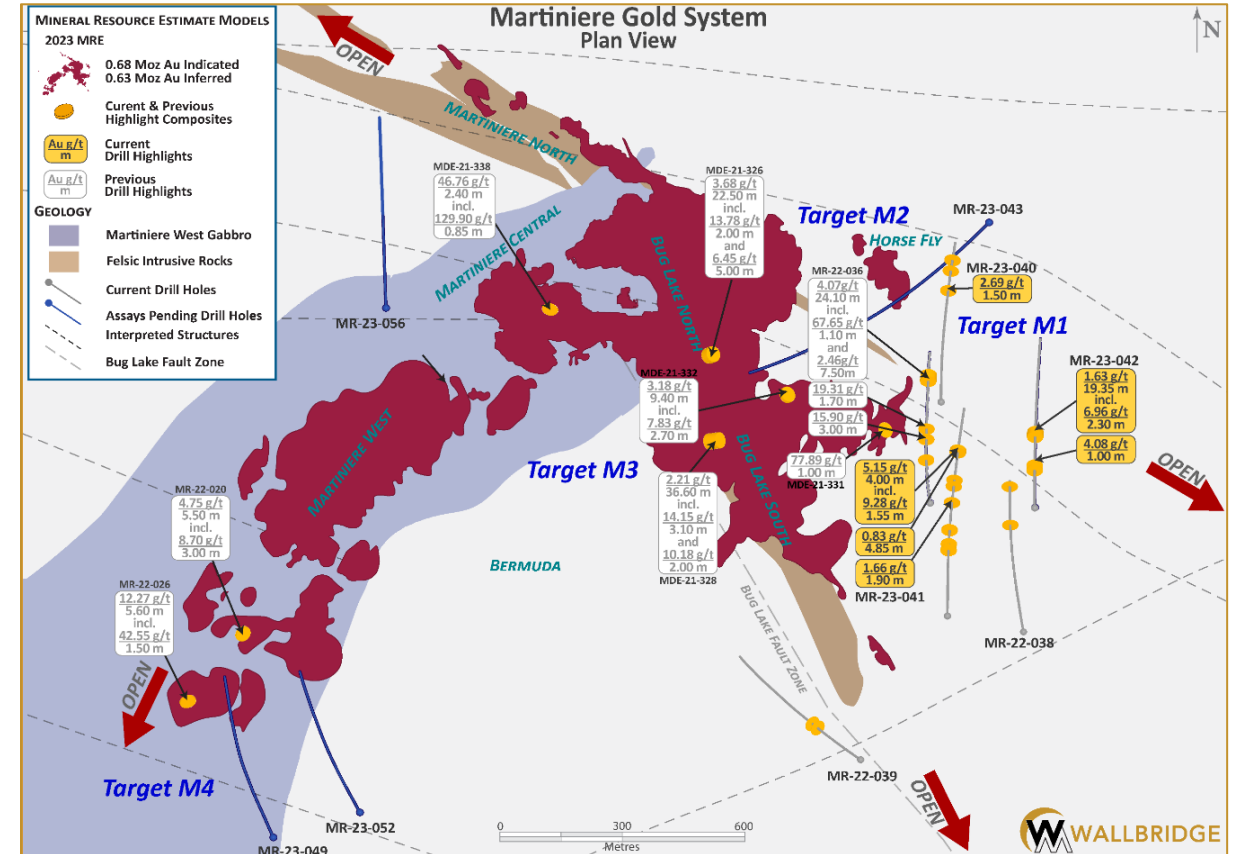
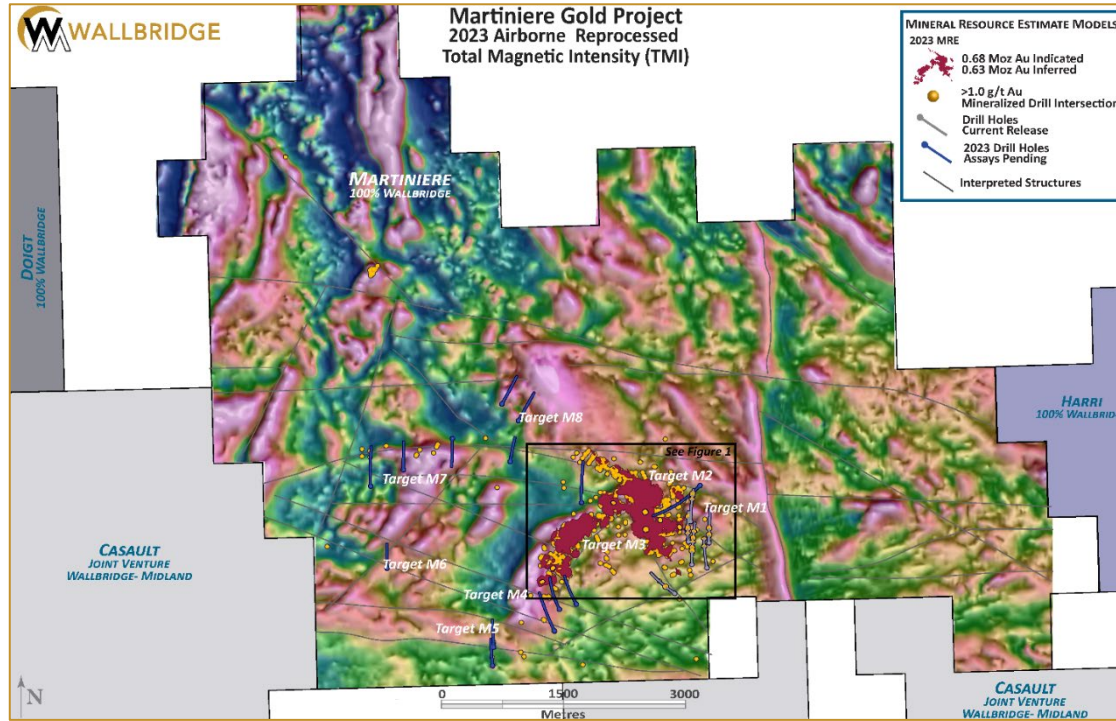
2023 Exploration Program

New gold-bearing Jeremie Diorite and extensions of known zones at Fenelon



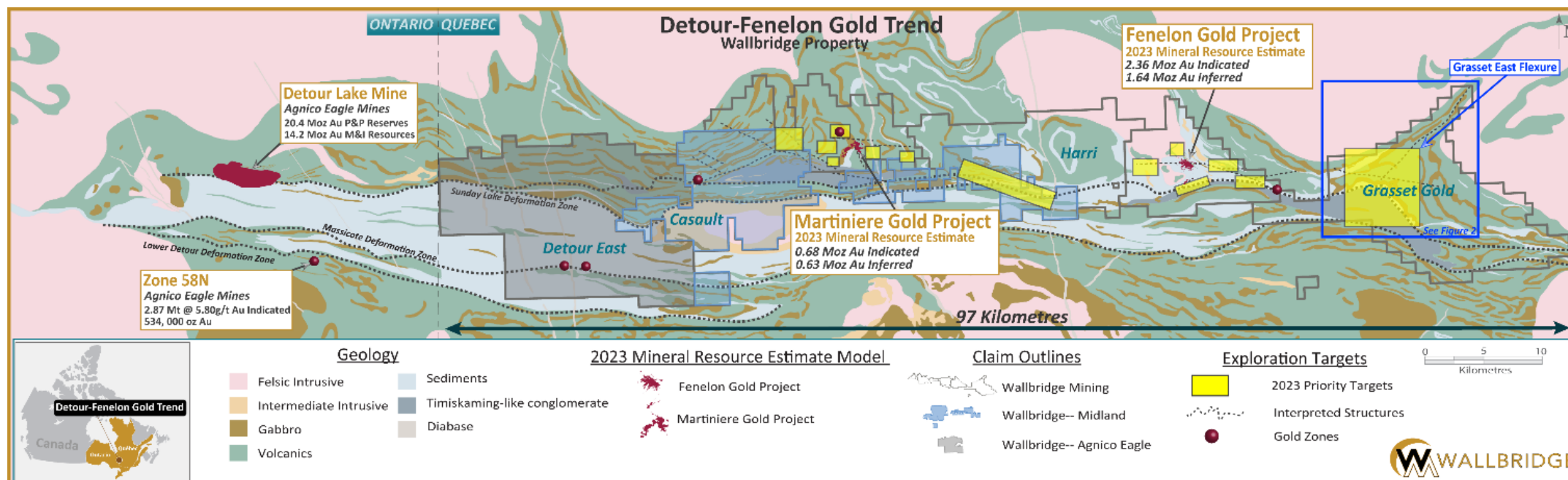
2023 Exploration Drilling

Martiniere exploration drilling



2023 Exploration Drilling

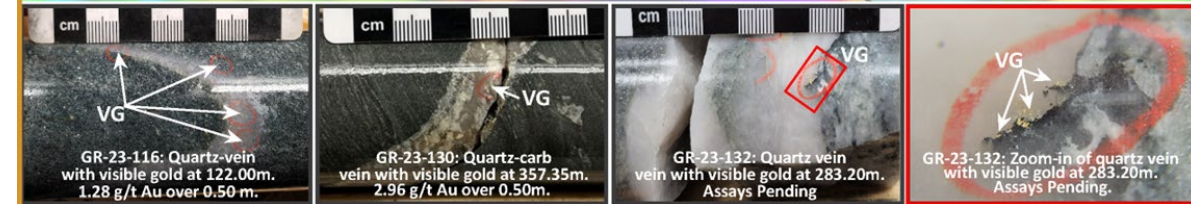
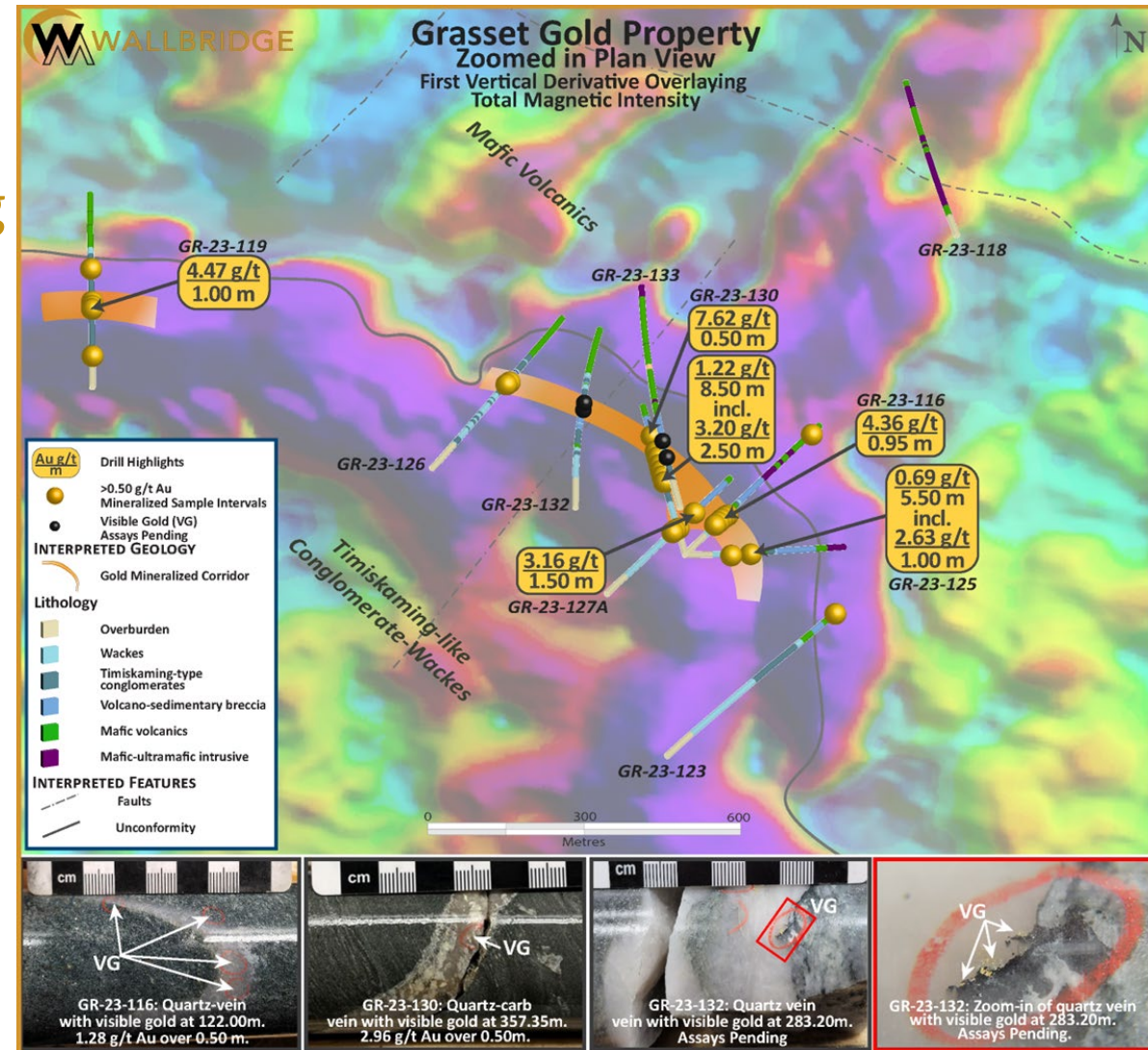
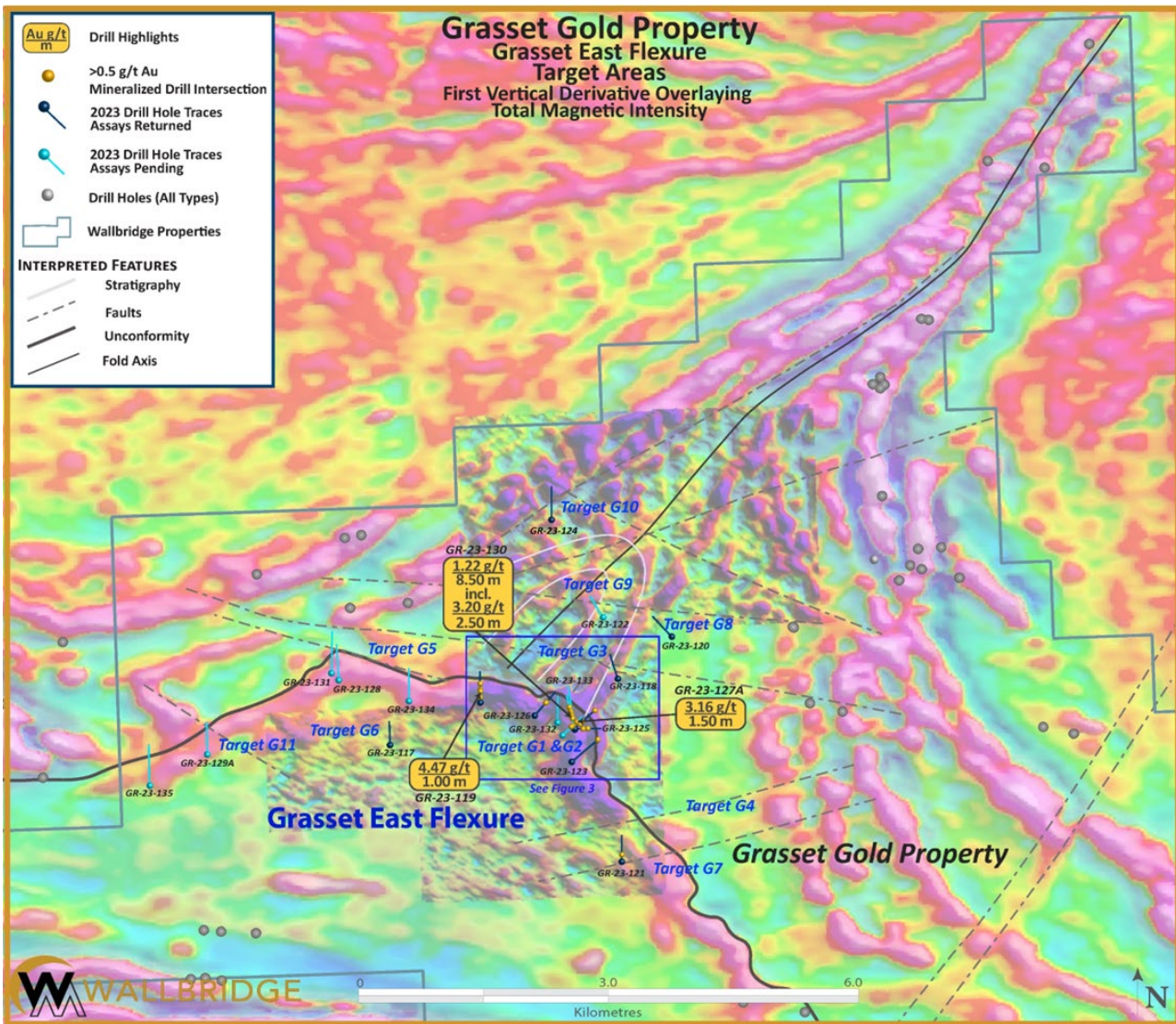
Grasset Gold – Grasset East Flexure drilling



- The “Grasset East Flexure” target area covers the central portion of a fold-structure identified from airborne magnetic surveys and a strong flexure in the Sunday Lake Deformation Zone, the primary structure controlling gold deposition along the Detour-Fenelon Gold Trend.
- Such folds and flexures along major structures are favorable sites for fluid circulation and are common host environments for gold deposition in greenstone belts globally, including at Fenelon.
- Large untested target area of 4.5 km by 3.5 km was targeted by initial drill program in Q3/Q4 2023

2023 Exploration Drilling

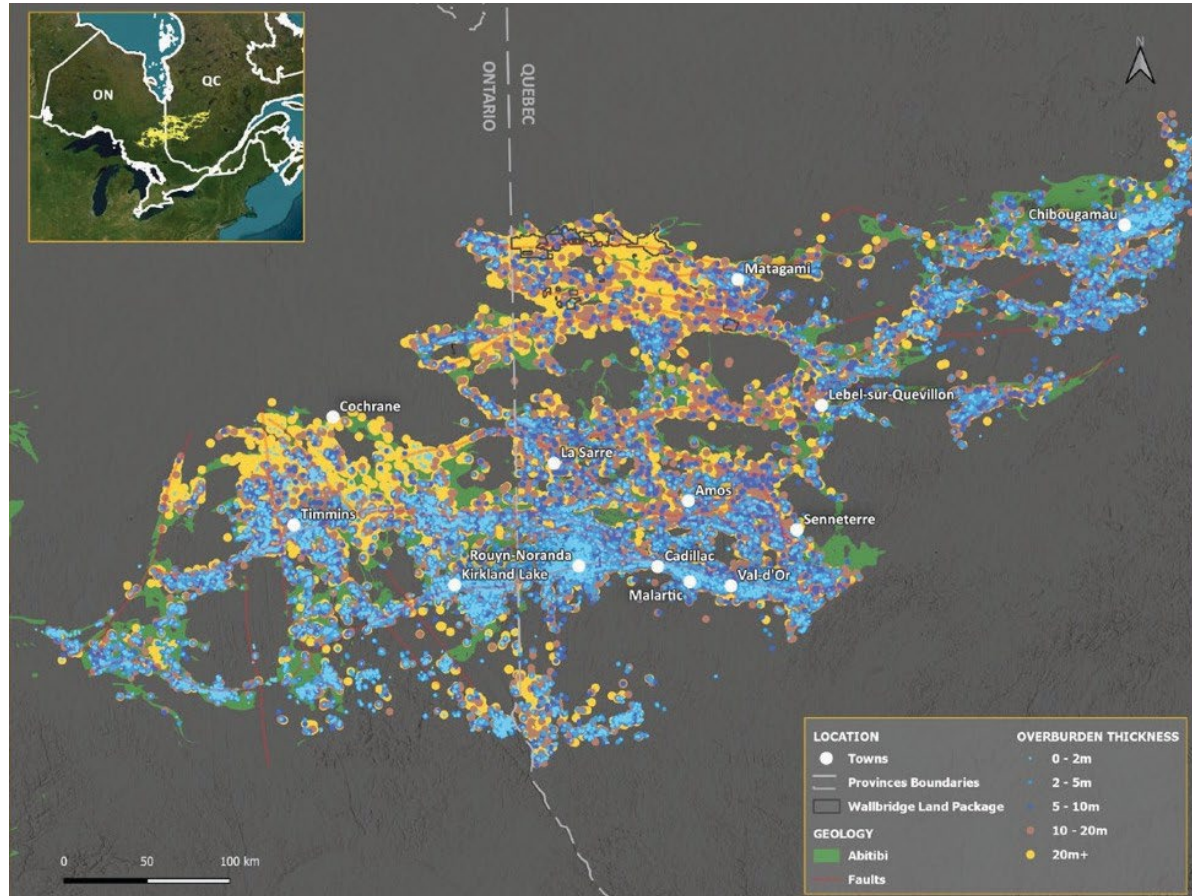
Grasset Gold – Grasset East Flexure drilling



- Widespread gold-bearing quartz veining intersected in nine drill holes, so far over an approximately 1-kilometre strike length (Targets G1, G2 and G5);
- Drill program was increased from the originally intended 5,000 metres to approx. 10,500 metres in 20 drill holes

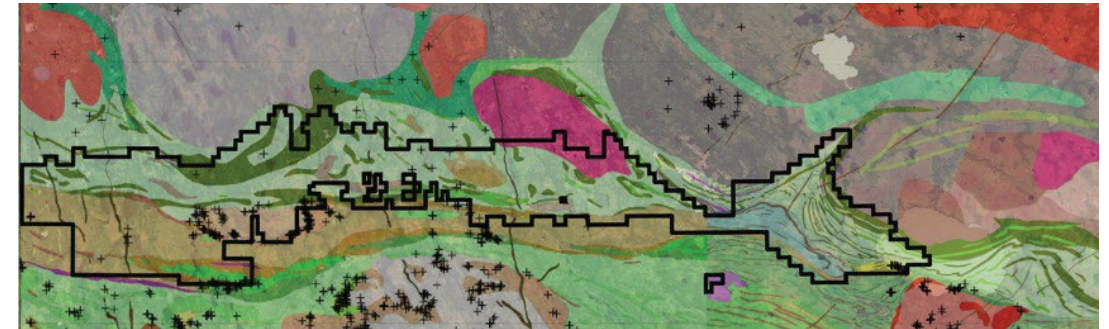
Abitibi Greenstone Belt

Overburden thickness



- Northwestern Abitibi covered with deep overburden, hindering past exploration efforts

Mapped surface outcrops

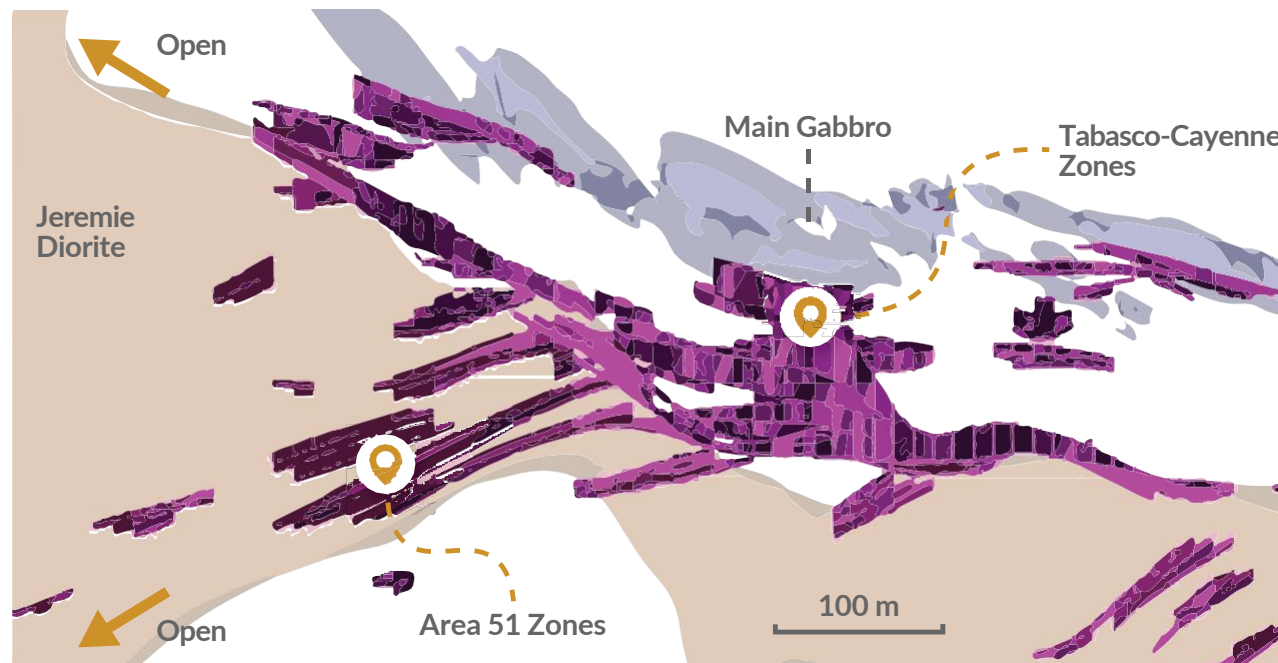


- Discovered: 1994-1997
- +5M oz Au known endowment on Quebec side (Wallbridge land package); 40 Moz at Detour Lake
- Very few outcrops



- Discovered: 1906 - 1911
- +100M oz Au known endowment
- Outcropping gold mineralization

Why Underground Bulk Mining?



Tabasco-Cayenne Zones

Plan view, 600 m depth

- Excellent along strike and down-dip continuity along diorite contact
- Multiple zones within a mineralized corridor tens of metres in width, controlled by shearing and stratigraphy
- Amenable to transverse mining
- Characteristic wide drill hole intersections:
 - 4.84 g/t Au over 56.00 metres (FA-20-128)
 - 4.06 g/t Au over 51.70 metres (FA-20-134)
 - 3.48 g/t Au over 54.00 metres (FA-20-197)
 - 4.31 g/t Au over 32.50 metres (FA-19-096)
 - 3.71 g/t Au over 42.50 metres (FA-20-203)



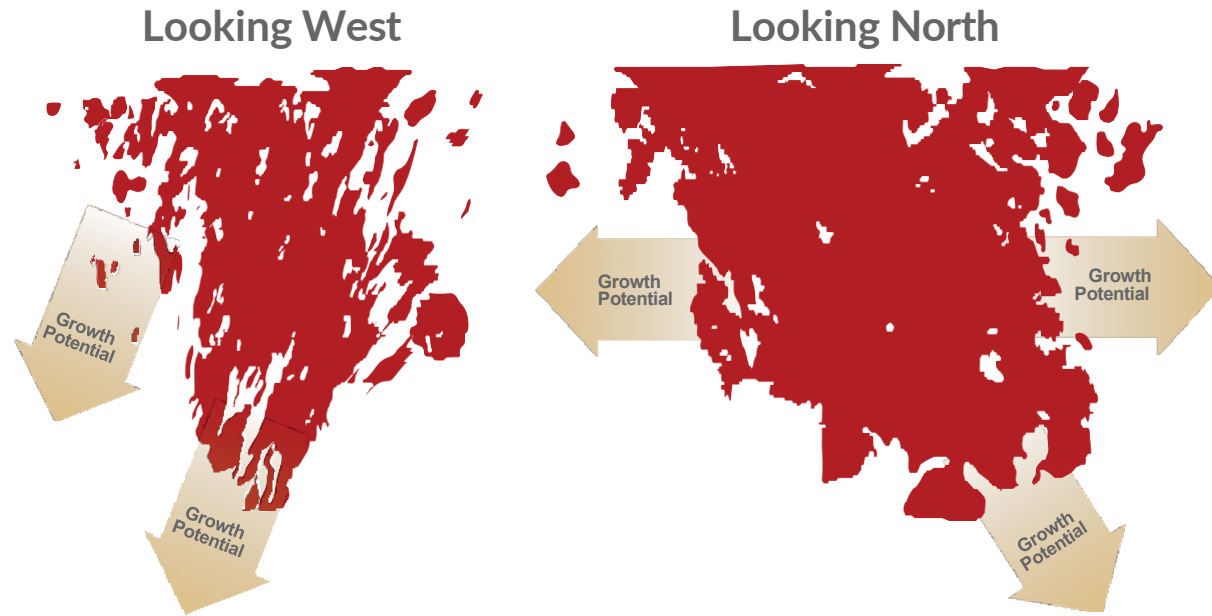
Area 51 Zones

Plan view, 475 m depth

- Good continuity and concentration of veins/shear zone network hosted by Jeremie Diorite
- Amenable to long-hole stoping or transverse mining
- Characteristic drillhole intersections:
 - 2.06 g/t Au over 38.50 metres (FA-20-115)
 - 1.93 g/t Au over 13.50 metres (FA-21-264A)
 - 1.70 g/t Au over 58.50 metres (FA-20-116)
 - 2.25 g/t Au over 19.65 metres (FA-20-191)
 - 3.28 g/t Au over 17.60 metres (FA-19-059)

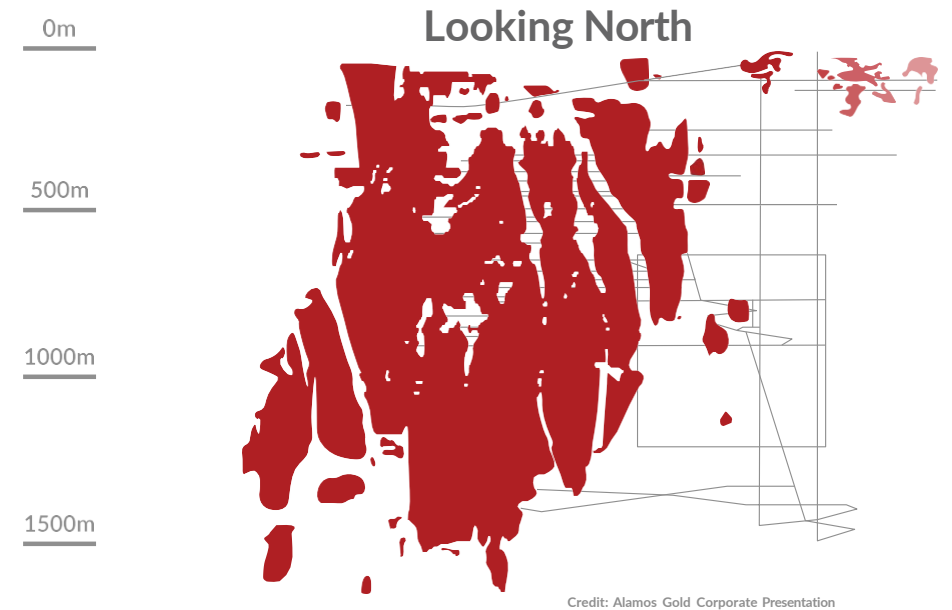
2023 Mineral Resource Update

Fenelon Gold Project – Bulk mineable



Fenelon Underground

- 21.67M tonnes @3.40 g/t - 2.37M Oz Indicated*
- 18.48M tonnes@ 2.89 g/t -1.72M Oz Inferred*
- Cut-off grade calculated at 1.5 g/t
- Resource to ~1,000m deep
- Gold ounces-per-vertical metres (avg. 4,000)
- Open in all directions
- 212,000 oz/yr., 7,000 tonnes per day (2023 PEA)
- US\$924/oz AISC (2023 PEA)



Alamos Gold's Young Davidson

- Mineral Resource preceding production of 3.16 Moz@ 3.04 g/t
- Cut-off grade calculated at 1.5 g/t
- 1,500m to 1,800m deep
- Production grade of 2.34 g/t
- 200,000 oz/yr production (~8,000 tonnes per day)
- US\$1,133/oz AISC

Our Team

Diverse and complementary backgrounds



ANTHONY MAKUCH
Director



BRIAN W. PENNY
Interim- CEO



BRIAN W. PENNY
Interim- CEO



BRIAN CHRISTIE
Director



DANIELLE GIOVENAZZO
Director



ALAR SOEVER
Director



MARY MONTGOMERY
Interim- CFO



ATTILA PÉNTEK
Vice President Exploration



SEAN STOKES
Corporate Secretary



JEFFERY SNOW
Director



MICHAEL PESNER
Director



JANET WILKINSON
Director



ROBERT MACDONALD
GM Mining Operations &
Projects



CAROL DUFFIELD
Director Human Resources



VICTORIA VARGAS
Capital Markets Advisor

FENELON PEA-STUDY TEAM

An assembly of expertise

Consulting Firms	Area of Responsibility	Qualified Person
InnovExplo Inc.	– Mineral Resources	– Carl Pelletier, P.Geo., – Vincent Nadeau-Benoit, P.Geo., – Simon Boudreau, P.Eng., – Marc R, Beauvais, P.Eng.
InnovExplo Inc.	– Mine design and scheduling, mine capital, and operating costs; G&A cost estimates and financial analysis	– Marc R, Beauvais, P.Eng.
G-Mining Services	– Metallurgy, processing plant design, capital, and operating cost estimates.	– Martin Houde, P. Eng.
BBA Inc.	– Tailings management site design, capital, and operating costs; and reclamation costs.	– Luciano Piciacchia, P.Eng., Ph.D. – Mélanie Turgeon, P.Eng.
WSP	– Infrastructure & material handling, and capital cost estimate. – Rock mass classification, and stope design. – Environment	– Jonathan Cloutier, P.Eng – André Harvey, Eng. – Nathalie Fortin, P.Eng., M.Env.
Responsible Mining Solutions Corp.	– Paste plant design, capital, and operating costs.	– Roberge, Jean-Louis, Eng.
ASDR Canada Inc.	– Water treatment plant design, capital, and operating costs. – UG dewatering design, capital, and operating costs.	– Dan Chen, P. Eng. – Martin Lessard, Eng.
Hydro-Ressources Inc.	– Mine hydrogeology and site hydrology.	– Michael Verreault, Eng., M.Sc.A.

2022 Year in Review

Unlocking the value... strategic land package

- Completed ~ 140,000 metres of diamond drilling
- Completed ~30,000 metres sampling of previously unsampled core
- Released updated mineral resource
- Estimate for Fenelon and Martiniere - 3.05 Moz. Indicated and 2.35 Moz Inferred (January 17, 2023)
- Signed a Pre-Development Agreement with Cree Nation government and Cree Communities of Waskaganish and Wahsha Sibi (August 2022)
- Bought-deal and private placement financing of ~\$30 million (February 2022)



2023 Mineral Resource Update

Detour-Fenelon Gold Trend

Detour Fenelon Gold Trend	Category	Cut-off Grade (Au g/t)	Metric Tonnes (t)	Grade (Au g/t)	Troy Ounces (oz Au)
Fenelon	Indicated	in Pit > 0.45	727,400	4.46	104,400
		UG > 1.50	20,931,700	3.37	2,265,200
			21,659,100	3.40	2,369,600
	Inferred	in Pit > 0.45	303,900	4.08	39,800
		UG > 1.50	18,181,400	2.87	1,678,500
			18,485,300	2.89	1,718,400
Martiniere	Indicated	in Pit > 0.55	7,757,700	2.14	534,100
		UG > 2.40/2.60	1,285,100	3.64	150,300
			9,042,800	2.35	684,300
	Inferred	in Pit > 0.55	2,652,400	1.83	156,400
		UG>2.40/2.60	3,542,500	4.18	475,900
			6,194,900	3.17	632,300
Total	Indicated		30,701,900	3.09	3,054,00
	Inferred		24,680,200	2.96	2,350,700

2023 Mineral Resource Estimate Update

Economic parameters

2023		
Parameters	Unit	Value
Gold Price	US\$/oz	1,600
Exchange Rate	CA\$/US\$	1.3
Fenelon		
Metallurgic Recovery	%	95.00
Mining Cost - Open Pit (Overburden)	CA\$/t	2.15
Mining Cost - Open Pit (Bedrock)	CA\$/t	5.50
Mining Cost - UG	CA\$/t	65.00
G&A Cost - Open Pit/UG	CA\$/t milled	9.20
Processing Cost - Open Pit/UG	CA\$/t milled	18.15
Calculated COG - Open Pit	Au g/t	0.45
Calculated COG - UG	Au g/t	1.50
Martiniere		
Metallurgic Recovery	%	96.00
Mining Cost - Open Pit (Overburden)	CA\$/t	2.15
Mining Cost - Open Pit (Bedrock)	CA\$/t	4.55
Mining Cost - UG (Long-hole)	CA\$/t	118.80
Mining Cost - UG (Cut & Fill)	CA\$/t	130.70
G&A Cost - Open Pit/UG	CA\$/t milled	9.20
Processing Cost - Open Pit/UG	CA\$/t milled	18.15
Calculated COG - Open Pit	Au g/t	0.55
Calculated COG - UG (Long-hole)	Au g/t	2.40
Calculated COG - UG (Cut & Fill)	Au g/t	2.60

2021		
Parameters	Unit	Value
Gold Price	US\$/oz	1,607
Exchange Rate	CA\$/US\$	1.3
Fenelon		
Metallurgic Recovery	%	96.00
Ore Premium Mining Cost - UG	CA\$/t	70.00
G&A Cost - Open Pit	CA\$/t	7.00
G&A Cost - UG	CA\$/t	8.50
Processing Cost - Open Pit	CA\$/t milled	12.90
Processing Cost - UG	CA\$/t milled	16.80
Calculated COG - Open Pit	Au g/t	0.35
Calculated COG - UG	Au g/t	1.50
Martiniere		
Metallurgic Recovery	%	96.00
Ore Premium Mining Cost - UG	CA\$/t	110.00
G&A Cost - Open Pit	CA\$/t milled	7.00
Ore Transport to Process	CA\$/t milled	6.00
G&A Cost - UG	CA\$/t milled	10.50
Processing Cost - Open Pit	CA\$/t milled	12.90
Processing Cost - UG	CA\$/t milled	29.00
Calculated COG - Open Pit	Au g/t	0.40
Calculated COG - UG	Au g/t	2.40

2023 Mineral Resource Estimate Update

Gold price sensitivity analysis – Fenelon

FENELON (All Zones)								
Gold Price (US\$/oz)	Cut-off Grade (gt/Au)	Tonnes (t)	Grade (g/t Au)	Troy Ounces (oz Au)	Cut-off Grade (g/t Au)	Tonnes (t)	Grade (g/t Au)	Troy Ounces (oz Au)
Indicated Resources								
1,920	in Pit > 0.35	817,500	4.06	106,600	UG > 1.25	25,433,700	3.00	2,457,100
1,760	in Pit > 0.40	774,800	4.24	105,700	UG > 1.35	23,530,400	3.15	2,380,300
1,600	in Pit > 0.45	727,400	4.46	104,400	UG > 1.50	20,931,700	3.37	2,265,200
1,440	in Pit > 0.50	530,200	5.27	89,900	UG > 1.70	18,188,100	3.65	2,136,600
1,280	in Pit > 0.55	476,000	5.60	85,800	UG > 1.90	15,890,500	3.93	2,009,900
Inferred Resources								
1,920	in Pit > 0.35	334,100	3.75	40,200	UG > 1.25	23,609,500	2.52	1,911,600
1,760	in Pit > 0.40	316,500	3.93	40,000	UG > 1.35	21,207,500	2.66	1,813,400
1,600	in Pit > 0.45	303,900	4.08	39,800	UG > 1.50	18,181,400	2.87	1,678,500
1,440	in Pit > 0.50	161,900	5.10	26,500	UG > 1.70	15,016,500	3.16	1,524,300
1,280	in Pit > 0.55	144,300	5.40	25,000	UG > 1.90	12,512,600	3.44	1,383,500

2023 Mineral Resource Update

Gold price sensitivity analysis – Martiniere

MARTINIERE (All Zones)								
Gold Price (US\$/oz)	Cut-off Grade (gt/Au)	Tonnes (t)	Grade (g/t Au)	Troy Ounces (oz Au)	Cut-off Grade (g/t Au)	Tonnes (t)	Grade (g/t Au)	Troy Ounces (oz Au)
Indicated Resources								
1,920	in Pit > 0.45	11,912,200	1.87	715,400	UG (LH) > 2.00 UG (C&F) > 2.15	1,303,200	3.21	134,600
1,760	in Pit > 0.50	9,741,100	1.99	622,100	UG (LH) > 2.20 UG (C&F) > 2.35	1,378,900	3.41	151,100
1,600	in Pit > 0.55	7,757,700	2.14	534,100	UG (LH) > 2.40 UG (C&F) > 2.60	1,285,100	3.64	150,300
1,440	in Pit > 0.60	6,569,100	2.24	472,100	UG (LH) > 2.70 UG (C&F) > 2.90	1,188,300	4.08	155,800
1,280	in Pit > 0.65	5,546,900	2.38	424,700	UG (LH) > 3.05 UG (C&F) > 3.30	944,900	4.38	133,100
Inferred Resources								
1,920	in Pit > 0.45	5,456,700	1.57	275,900	UG (LH) > 2.00 UG (C&F) > 2.15	4,650,100	3.58	535,800
1,760	in Pit > 0.50	3,507,500	1.66	187,700	UG (LH) > 2.20 UG (C&F) > 2.35	4,140,700	3.94	524,400
1,600	in Pit > 0.55	2,652,400	1.83	156,400	UG (LH) > 2.40 UG (C&F) > 2.60	3,542,500	4.18	475,900
1,440	in Pit > 0.60	1,885,200	1.97	119,400	UG (LH) > 2.70 UG (C&F) > 2.90	2,978,100	4.69	449,400
1,280	in Pit > 0.65	1,316,100	2.13	90,200	UG (LH) > 3.05 UG (C&F) > 3.30	2,359,500	5.24	397,600

Our People

Our #1 Asset

